

Pitcher

Caring Communities

Data Book **March 2013**

A review and analysis of the community surrounding the Caring Communities site located at Pitcher Elementary School in Kansas City, Mo.



Introduction

About Caring Communities

Caring Communities was developed by the Local Investment Commission (LINC) to fulfill the role once played by the courthouse square: a place where the community gathers together, shares ideas, and holds neighborhood events. The growth of Caring Communities reflects increasing national interest in creating “community schools.”

The LINC Caring Communities effort, which began in 1992, has grown to 80 sites in seven school districts in Kansas City and Jackson County, MO. LINC’s school district partners include Kansas City, Independence, Fort Osage, North Kansas City, Hickman Mills, Grandview and Center. Other partners include charter schools, local government, state agencies, and community organizations.

What is a Community School?

A community school is both a place and a set of partnerships between the school and other community stakeholders which leads to improved student learning, stronger families and healthier communities. Community schools are open to everyone—all day, including evenings and weekends. Community-based organizations or public institutions often work as lead agencies in community schools, helping to mobilize community assets and support students success.

Coalition for Community Schools
www.communityschools.org

About This Book

The Pitcher Caring Communities Data Book is intended to provide useful information for decision-makers of the Pitcher community — parents, neighbors, site council members, staff and the general public. We hope the facts, figures and resources contained in this book will help these decision-makers to better understand their neighborhoods and identify needs and opportunities for better coordination of services. We hope this book will help build on the success of Caring Communities and help it thrive in the future.

To request additional copies of this book, or to suggest improvements for future editions of this book, contact the Pitcher Caring Communities Site Coordinator. The book is also available to download for free at www.kclinc.org/pitcher



Pitcher Elementary
Established 1999

Shelia Marshall, Site Coordinator
 9915 E 38th Terr., Kansas City, MO 64133
 (816) 418-4550
smarshall@kclinc.org

Community Analysis Zone (CAZ)

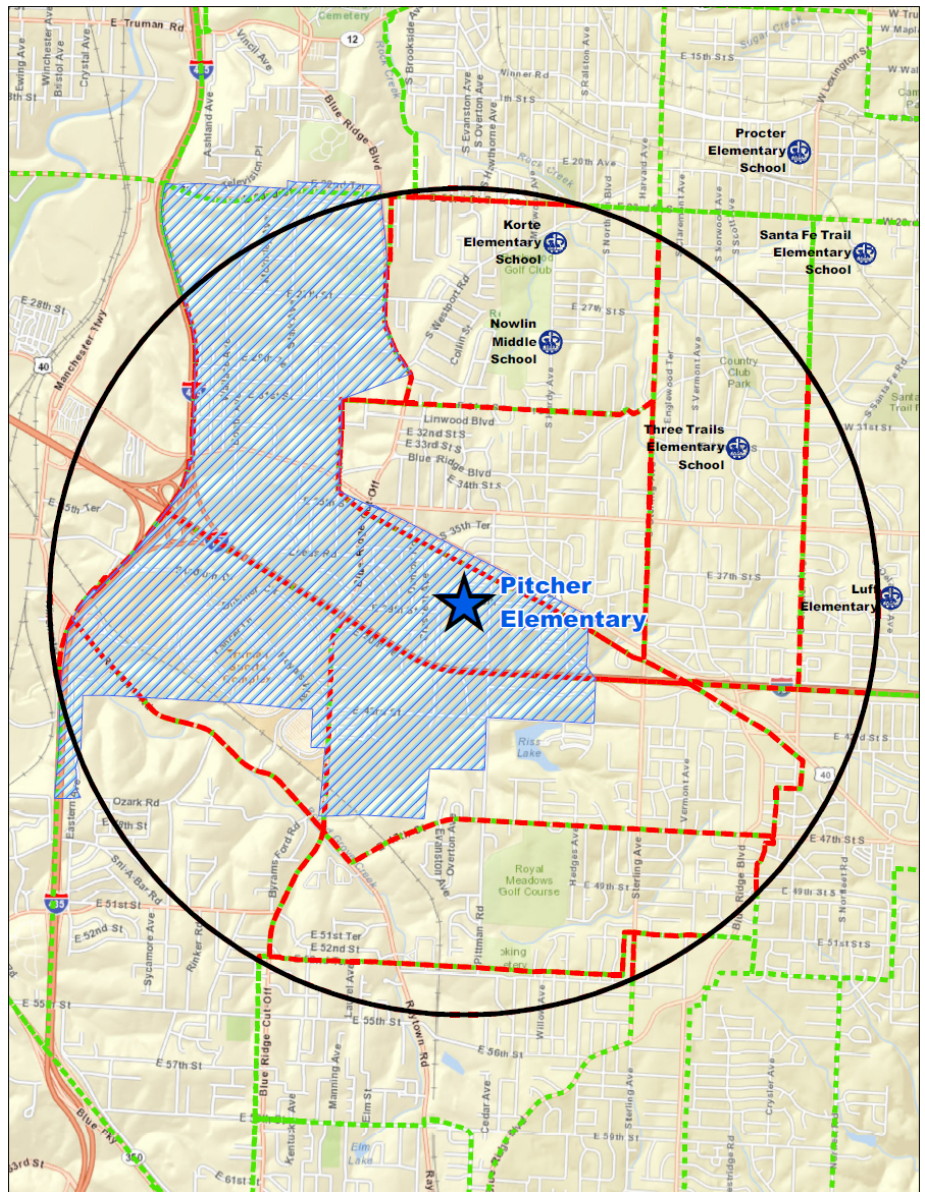
The Community Analysis Zone (CAZ) for the Pitcher community was established using Pitcher Elementary as a reference point and includes the area within a two-mile radius of the school (the black circle in the map at right).

The CAZ overlaps the school boundaries (blue shaded area) and allows for analysis of data about residents, neighborhoods and services within the community served by the Caring Communities site.

For the purpose of this book the boundaries of the Pitcher CAZ and the “Pitcher community” are the same, and the terms “CAZ” and “community” are used interchangeably.

Data for the site book was obtained from a number of resources including but not limited to the City of Kansas City, Mo.; U.S. Census Bureau; Jackson County, Mo.; Missouri Department of Elementary and Secondary Education; Missouri Department of Health and Senior Services; United Way of Greater Kansas City; Missouri Department of Social Services; University of Missouri-Kansas City Center for Economic Information; and University of Michigan National Poverty Center.

Community data was analyzed by census tract (red boundaries) within the CAZ. Census tracts are small, relatively permanent statistical subdivisions of a county delineated by local participants as part of the U.S. Census Bureau's Participant Statistical Areas Program. The U.S. Census Bureau delineated census tracts in situations where no local participant existed or where local or tribal governments declined to participate. Census tracts generally have between 1,500 and 8,000 people, with an optimum size of 4,000 people. (Source: U.S. Census Bureau).



Education

Pitcher Elementary

Total 2012 Enrollment: 320

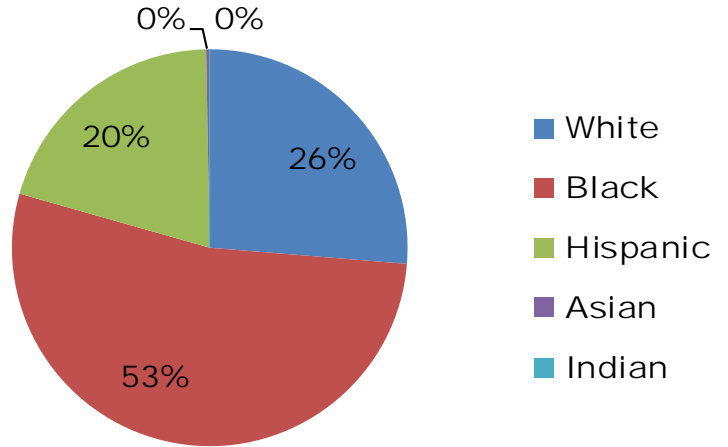
Ms. Karol Howard, Principal

9915 E. 38th Terrace, Kansas City, MO 64133

(816) 418-4550

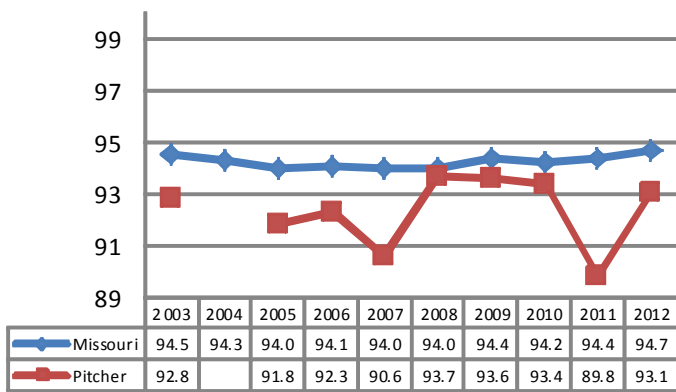
khoward@kcpublicschools.org

2012 Student Demographics



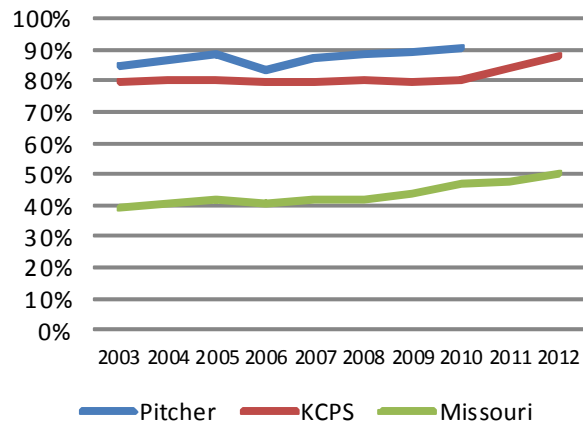
Source: Missouri Department of Elementary and Secondary Education

2012 Student Attendance Rate



Source: Missouri Department of Elementary and Secondary Education

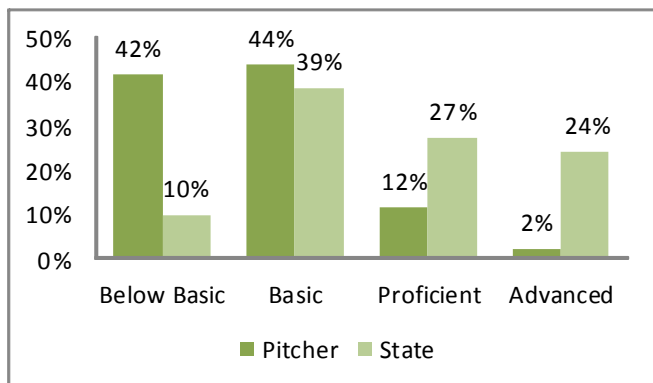
Free/Reduced Lunch



Source: Missouri Department of Secondary and Elementary Education

2012 Missouri Assessment Program (MAP)

5th Grade Science

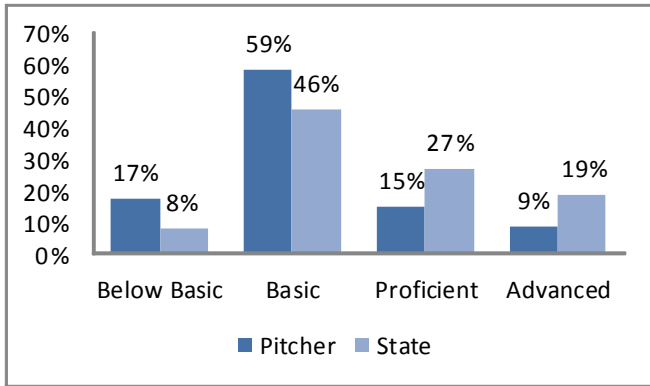


Source: Missouri Department of Elementary and Secondary Education

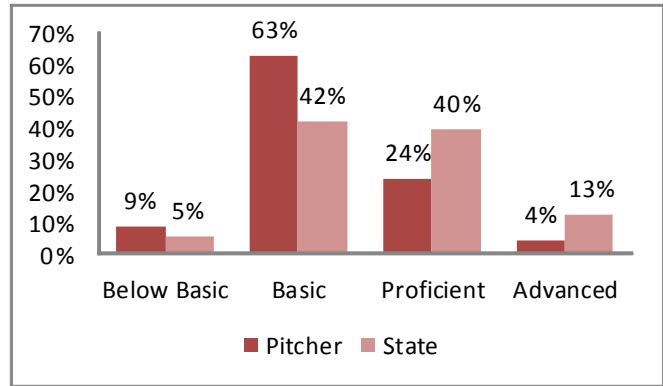
Education

2012 Missouri Assessment Program (MAP), continued

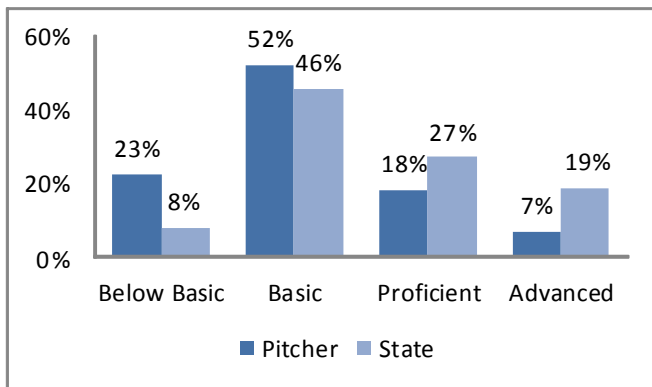
3rd Grade Communication Arts



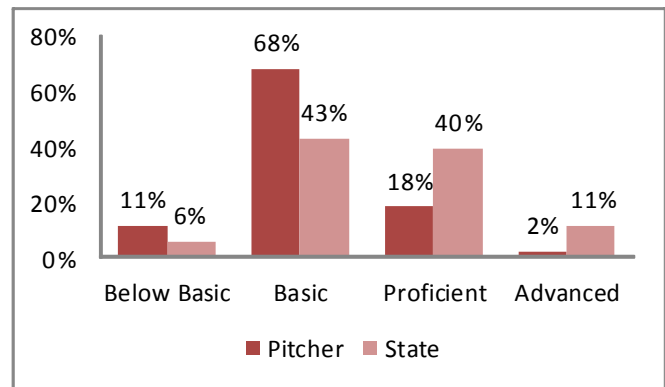
3rd Grade Mathematics



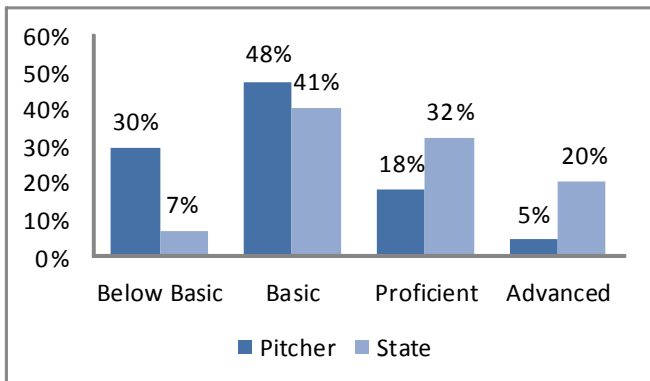
4th Grade Communication Arts



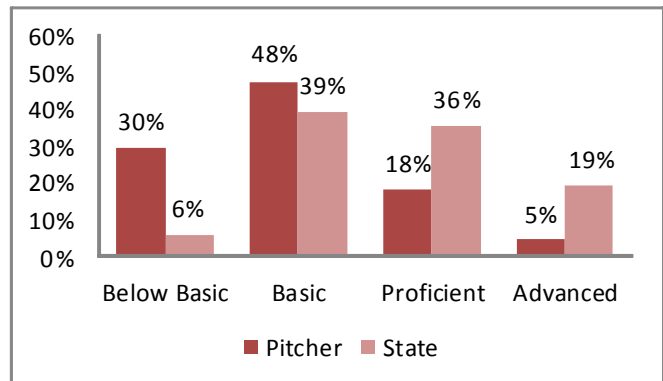
4th Grade Mathematics



5th Grade Communication Arts



5th Grade Mathematics

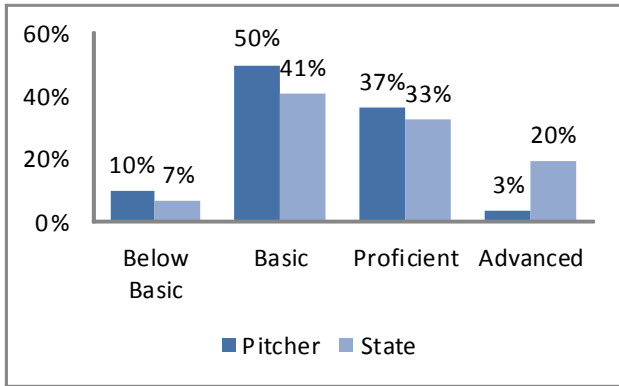


Source: Missouri Department of Elementary and Secondary Education

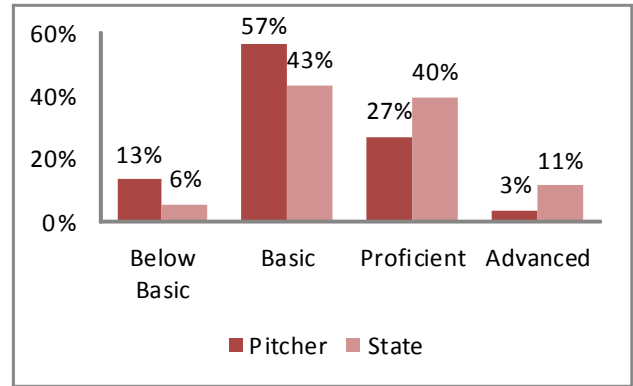
Education

2012 Missouri Assessment Program (MAP), continued

6th Grade Communication Arts



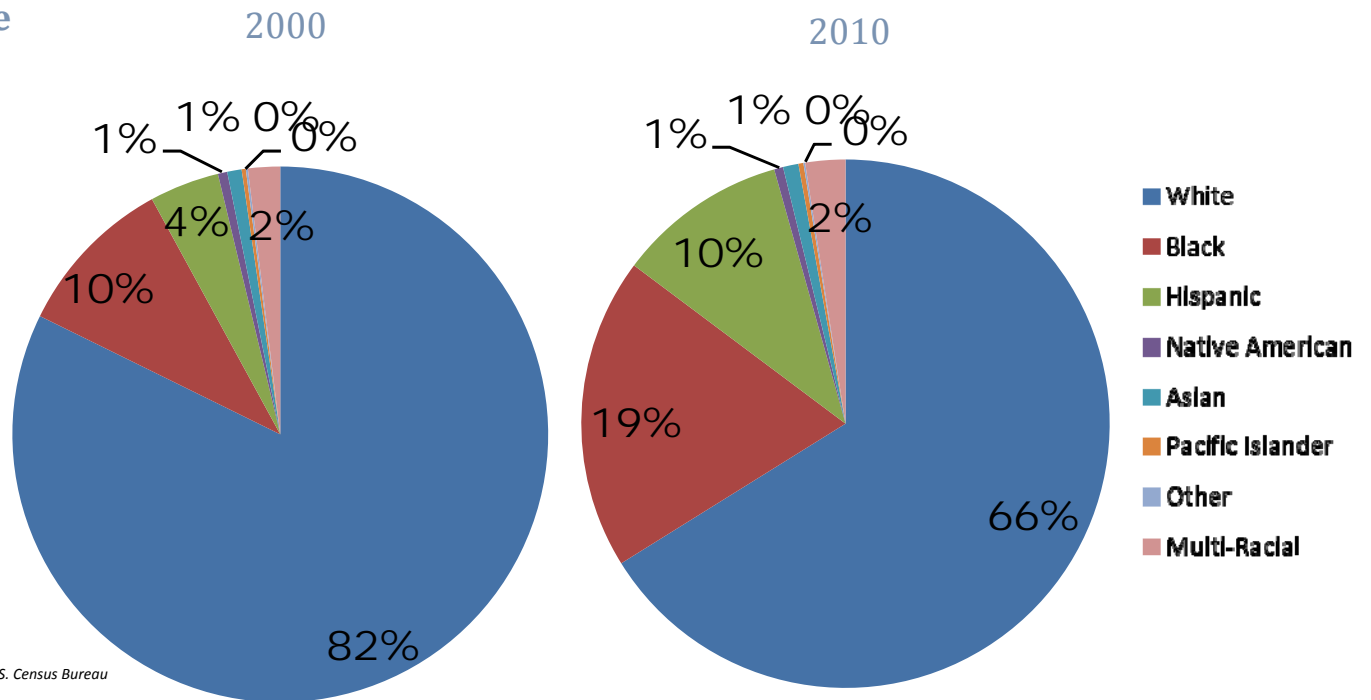
6th Grade Mathematics



Source: Missouri Department of Elementary and Secondary Education

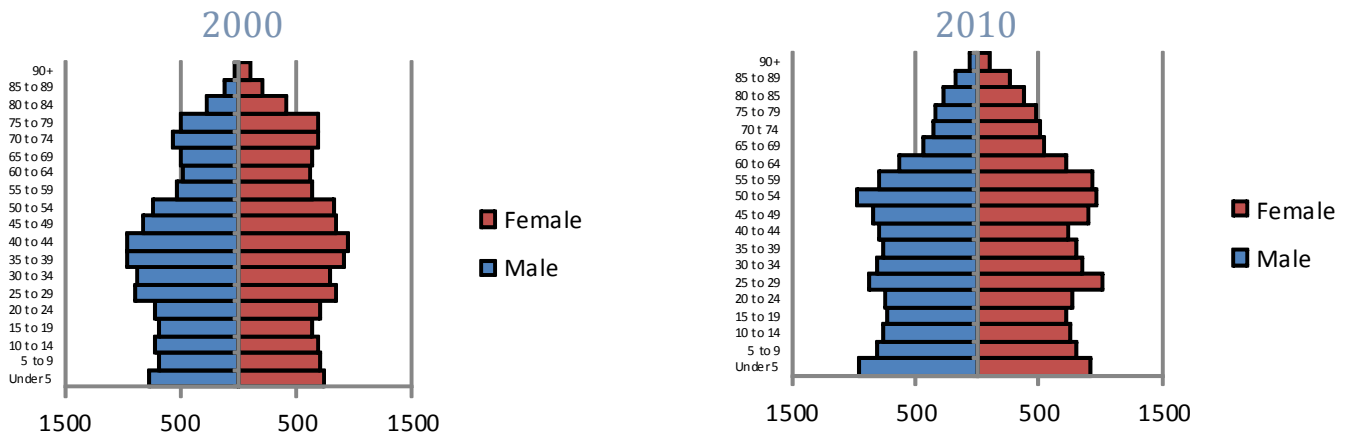
Demographics

Race



Source: U.S. Census Bureau

Age by Sex



Source: U.S. Census Bureau

Family Type with Related Children

	2000	2010	% Change
Total Population	24,512	25,244	3%
Total Families	6,554	6,371	-3%
Married Families	4,898	3,985	-19%
With Children Under Age 18	1,731	1,504	-13%
Single Father Families	467	646	38%
With Children Under Age 18	260	372	43%
Female Single Parent Families	1,189	1,740	46%
With Children Under Age 18	736	1,166	58%

Source: U.S. Census Bureau

Economy

	Pitcher	Jackson County
Median Income	\$36,779	\$46,252
Unemployment Rate	9.7%	8.8%

Source: U.S. Census

Poverty

	Pitcher	Jackson County
2000	8.3%	11.9%
2010	15.2%	15.7%

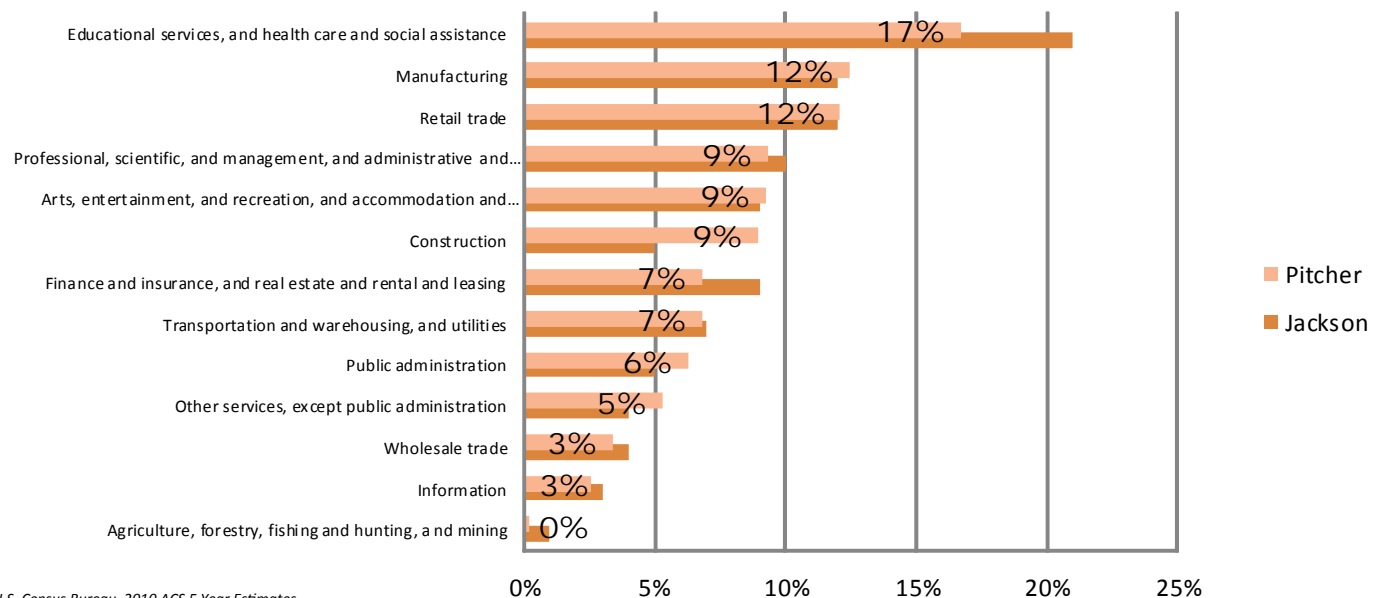
U.S. Census Bureau, 2010 ACS 5 Year Estimates

2010 Poverty Thresholds, Selected Family Types		
Single Individual	Under 65	\$ 11,344
	65 years and Older	\$ 10,458
Single Parent	One Child	\$ 15,030
	Two Children	\$ 17,568
	No Children	\$ 14,602
Two Adults	One Child	\$ 17,552
	Two Children	\$ 22,113
	Three Children	\$ 26,023

Note: The United States determines the official poverty rate using poverty thresholds that are issued each year by the Census Bureau. The thresholds represent the annual amount of cash income minimally required to support families of various sizes. A family is counted as poor if its pretax money income is below its poverty threshold. Money income does not include noncash benefits such as public housing, Medicaid, employer-provided health insurance and food stamps.

Source: National Poverty Center

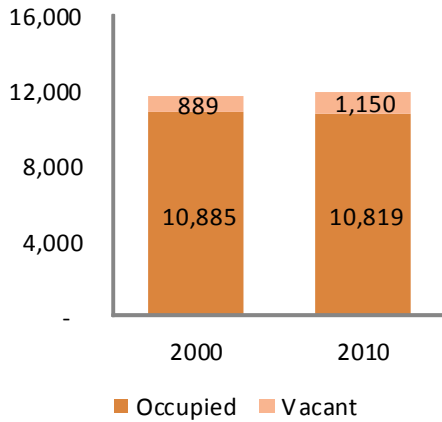
Employment by Industry



U.S. Census Bureau, 2010 ACS 5 Year Estimates

Housing

Vacant Houses



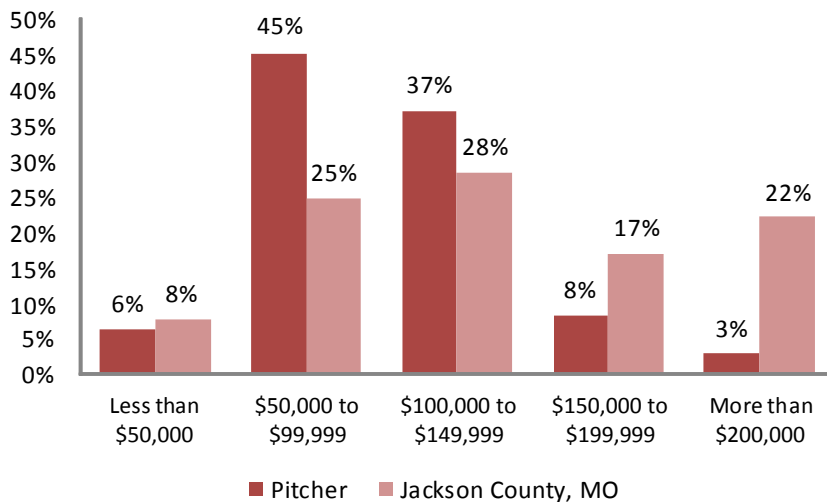
Source: U.S. Census, 2000, 2010

Vacancy Rate

	2000	2010
Pitcher	7.6%	9.6%
Jackson County	7.6%	12.0%

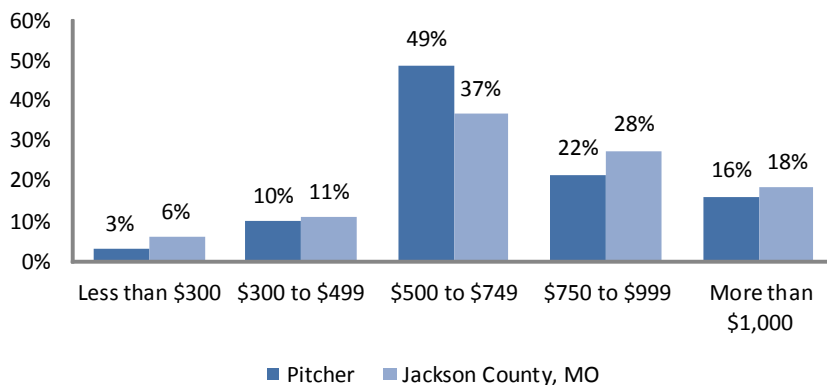
Source: U.S. Census, 2000, 2010

Home Values



Source: U.S. Census, 2010 ACS 5 Year Estimates

Gross Rent



Source: U.S. Census, 2010 ACS 5 Year Estimates

Housing Characteristics	2000 to 2010 Change
Housing Units	2%
Tenure	
Owner	-7%
Renter	17%
Units Moved into Previous Five Years	-27%
Age of Housing Stock	2010 Percent
Less than 5 Years	2%
Less than 10 Years	4%
Less than 20 Years	10%
Less than 30 Years	16%
Less than 40 Years	28%
More than 50 Years	72%

Source: U.S. Census, 2010 ACS 5 Year Estimates

Community Resources

Parks

		Acres
FAIRVIEW PARK	E. 38th St. & Arlington Ave.	9.60
SKILES PARK	E. 47th St. & Skiles Ave.	10.36
WEST ROCK CREEK PARK	E. 27th St. & Hunter Ave.	18.48
Cassell Park	10401 E. 31st St., Independence, MO	4
Country Club Park	2930 S. Norton Ave., Independence, MO	6
Firehouse Park	11305 E. 35th St. S. , Independence, MO	7
Hill Park	2201 S. Maywood Ave., Independence, MO	20
Pitcher Park	9807 E. 35th Terr, Independence, MO	1
Roberts Park	3250 S. Blue Ridge Blvd., Independence, MO	11
Rotary Park	10615 E. 24th St. , Independence, MO	15

Source: Kansas City Dept. of Parks and Recreation

Food Pantries

BIRCHWOOD MISSION CENTER - FOOD PANTRY	3884 Blue Ridge Blvd	Independence	MO
--	----------------------	--------------	----

Source: United Way of Greater Kansas City

Homeless Shelters

MOTHER'S REFUGE	3721 Delridge	Independence	MO
-----------------	---------------	--------------	----

Source: United Way of Greater Kansas City

Nursing Homes

HIDDEN LAKE CARE CENTER	11400 HIDDEN LAKE DRIVE	RAYTOWN	MO
-------------------------	-------------------------	---------	----

Source: Missouri Department of Health and Senior Services

Health Centers

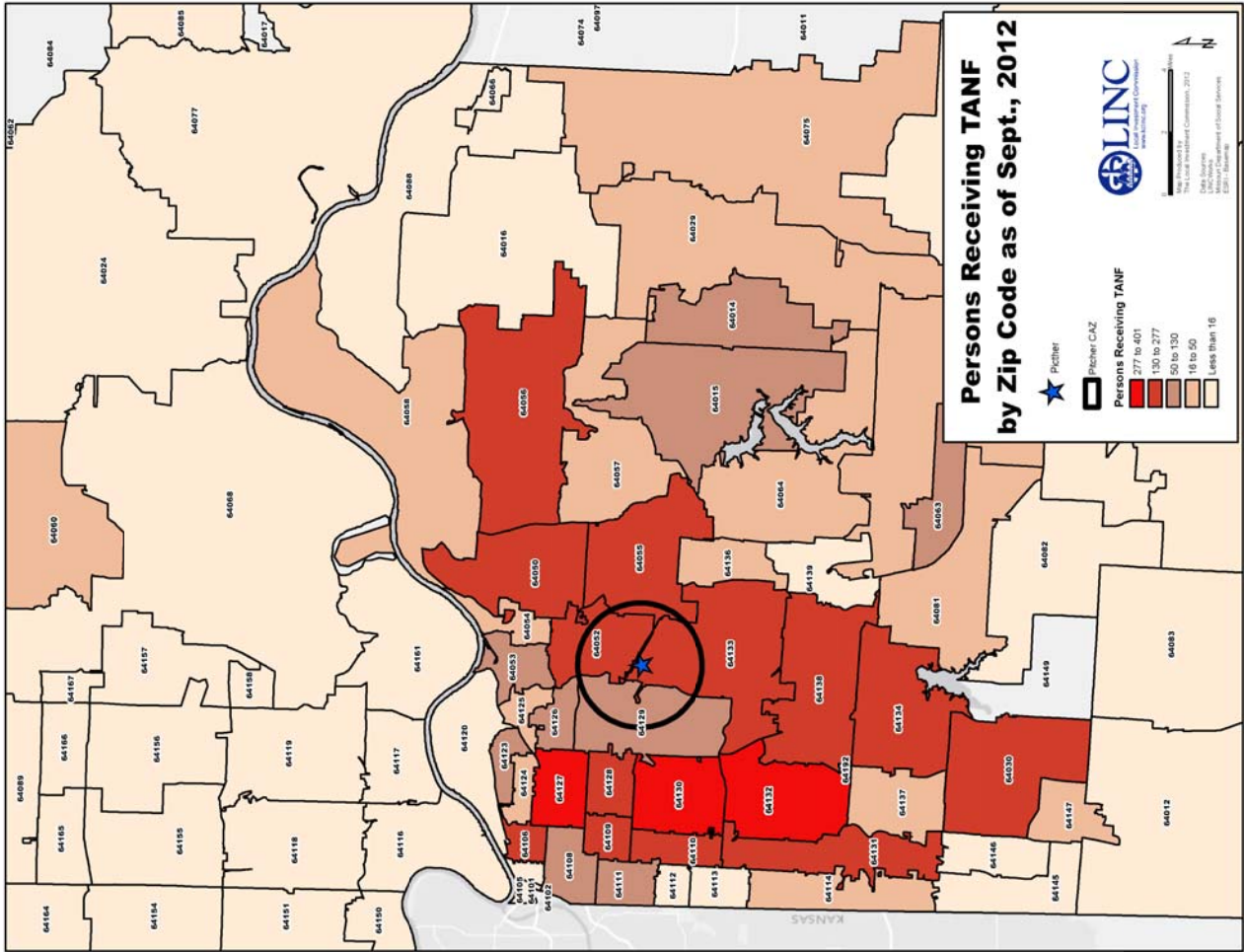
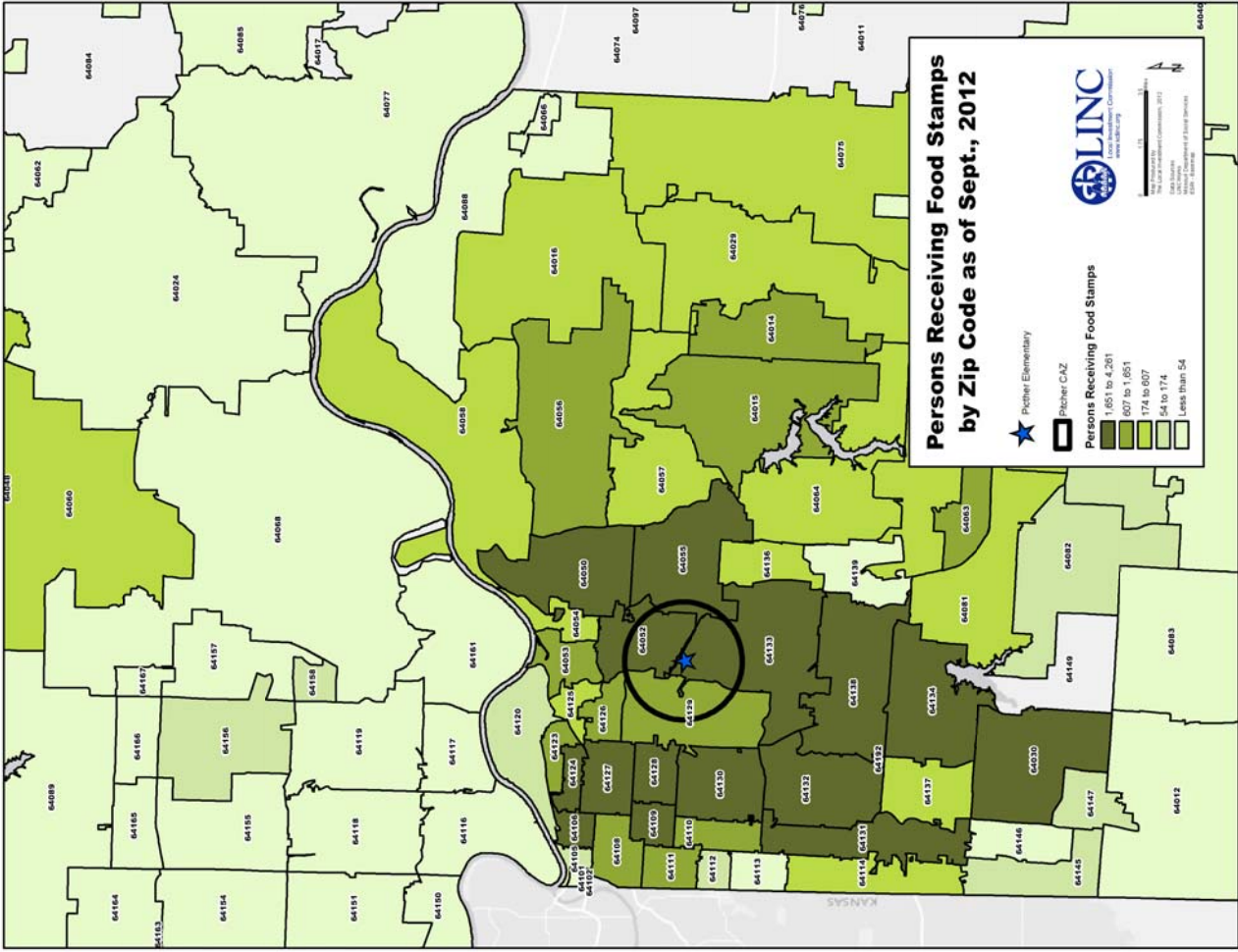
Two Rivers Psychiatric Hospital	5121 Raytown Rd	Kansas City	MO
---------------------------------	-----------------	-------------	----

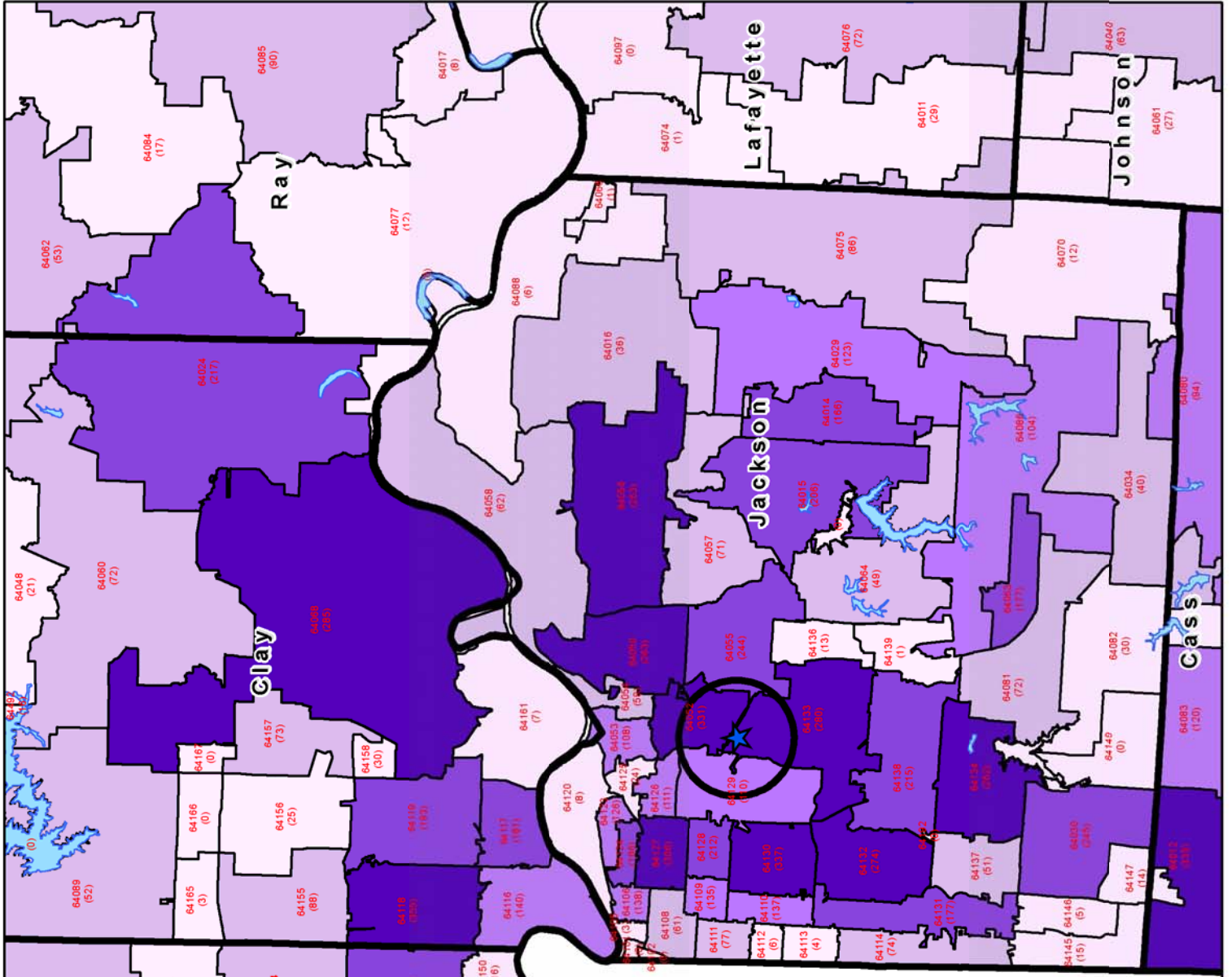
Source: Missouri Department of Health and Senior Services

Community Resources

Churches

Ascension Lutheran Church	4900 Blue Ridge Blvd	Kansas City	MO
Barker Temple	11401 E 47th St	Kansas City	MO
Barker Temple Church School	11439 E. 47th St.	Kansas City	MO
Beverly Hills Baptist Church	1229 W 31st St S	Independence	MO
Birchwood Baptist Church	3883 Blue Ridge Blvd	Independence	MO
Blue Ridge Baptist Church	9320 E 35th St S	Independence	MO
Blue Ridge Boulevard Christian	3625 Blue Ridge Blvd	Independence	MO
Brooking Heights Baptist Chr	9500 E 53rd St	Raytown	MO
Calvary Baptist Church	9505 E 47th St	Kansas City	MO
Calvary Presbyterian Church	2911 Blue Ridge Blvd	Independence	MO
Christ Covenant Church	4041 Denton Rd	Kansas City	MO
Christian Science Reading Room	12020 E 47th St	Kansas City	MO
Church of God in Kansas City	3100 S. Crysler Ave.	Independence	MO
Community of Christ	4341 Blue Ridge Blvd.	Kansas City	MO
Community of Christ	3371 Blue Ridge Blvd	Independence	MO
Community Of Christ	3100 S Crysler Ave	Independence	MO
Community Or Christ	3371 Blue Ridge Blvd	Independence	MO
Eastpoint Family Church	3923 Pittman Rd.	Kansas City	MO
East Side Church Of Christ	2629 Blue Ridge Blvd	Kansas City	MO
Eastgate Christian Church	4010 S River Blvd	Independence	MO
Eastside Assembly Of God Chr	3923 Pittman Rd	Kansas City	MO
Glenwood Park United Methodist	10000 E 23rd St S	Independence	MO
Gospel Assembly Church	9600 E 47th St	Kansas City	MO
Grace Christian Assembly	2309 Blue Ridge Blvd	Independence	MO
Heartland Districts Office	4240 Blue Ridge Blvd # 700	Kansas City	MO
Higher Ground Church Of God	8715 E 26th St	Kansas City	MO
Jehovah's Witnesses	2885 S Hardy Ave	Independence	MO
Landmark International Deliverance Worship	8701 Sni A Bar Rd.	Kansas City	MO
Lifeline Baptist Church	12002 E 47th St	Kansas City	MO
Miracle Temple	11200 E Sheley Rd	Independence	MO
Nativity Of Mary Church	10017 E 36th Ter S	Independence	MO
Pittman Road Church Of God	4700 Pittman Rd	Kansas City	MO
Reachout Ministries	5309 Kentucky Ave	Raytown	MO
Ridgeview Christian Church	8640 Sni A Bar Rd	Kansas City	MO
Rockwood Baptist Church	10035 E Westport Rd	Independence	MO
Rose Of Sharon Pentecostal Chr	9621 E 38th Ter	Kansas City	MO
Skyline Baptist Church	3200 Donnelly Ave	Kansas City	MO
St Bernadettes Church	9020 E 51st Ter	Kansas City	MO
St Paul United Methodist Chr	3601 S Sterling Ave	Independence	MO
Sterling Acres Baptist Church	11200 E 47th St	Kansas City	MO
Stonebrook Assembly Of God	4207 Blue Ridge Cut Off	Kansas City	MO
Tabernacle Of Praise Upc	3405 S Claremont Ave	Independence	MO
Trinity Independent Baptist Church	4501 Pittman Rd.	Kansas City	MO





Total CA/N Reports: Northwest Region

Total Reports	Report Counts:
More than 250	
150 to 250	
90 to 150	
30 to 90	
Less than 30	

County Boundary
 Rivers
 Lakes
 Pitcher
 Pitcher CAZ

Total region count: 13,918
Max Count: Jackson
Zip - 64050
363 Reports

Data Resources

City of Kansas City, Mo.

Jackson County, Mo.

Kansas City Free Health Clinic

Kansas City Parks and Recreation Department

Kansas City Public Schools

Mid-America Regional Council

Missouri Department of Elementary and Secondary Education

Missouri Department of Social Services

Missouri Department of Health and Human Services

United States Census Bureau

United States Department of Housing and Urban Development

United States Department of Labor

United Way of Greater Kansas City

University of Missouri-Kansas City Center for Economic Information

University of Michigan National Poverty Center

**Site Data Book developed By:
Local Investment Commission (LINC)
2013**

**All maps, photographs, and tables were developed and/or are property of LINC, unless otherwise noted,
and must be cited for external use.**

**For more information on LINC, please visit:
www.kclinc.org**