

Bryant

Caring Communities

Data Book March 2013

A review and analysis of the community surrounding the Caring Communities site located at Bryant Elementary School in Independence, Mo.



Introduction

About Caring Communities

Caring Communities was developed by the Local Investment Commission (LINC) to fulfill the role once played by the courthouse square: a place where the community gathers together, shares ideas, and holds neighborhood events. The growth of Caring Communities reflects increasing national interest in creating “community schools.”

The LINC Caring Communities effort, which began in 1992, has grown to 80 sites in seven school districts in Kansas City and Jackson County, MO. LINC’s school district partners include Kansas City, Independence, Fort Osage, North Kansas City, Hickman Mills, Grandview and Center. Other partners include charter schools, local government, state agencies, and community organizations.

What is a Community School?

A community school is both a place and a set of partnerships between the school and other community stakeholders which leads to improved student learning, stronger families and healthier communities. Community schools are open to everyone—all day, including evenings and weekends. Community-based organizations or public institutions often work as lead agencies in community schools, helping to mobilize community assets and support students success.

Coalition for Community Schools

www.communityschools.org

About This Book

The Bryant Caring Communities Data Book is intended to provide useful information for decision-makers of the Bryant community — parents, neighbors, site council members, staff and the general public. We hope the facts, figures and resources contained in this book will help these decision-makers to better understand their neighborhoods and identify needs and opportunities for better coordination of services. We hope this book will help build on the success of Caring Communities and help it thrive in the future.

To request additional copies of this book, or to suggest improvements for future editions of this book, contact the Bryant Caring Communities Site Coordinator. The book is also available to download for free at www.kclinc.org/bryant



Bryant Caring Communities

Established 1994

Gerardo Martinez, site coordinator
 827 W. College, Independence, MO 64050
 (816) 695-2619
gmartinez@kclinc.org

Community Analysis Zone (CAZ)

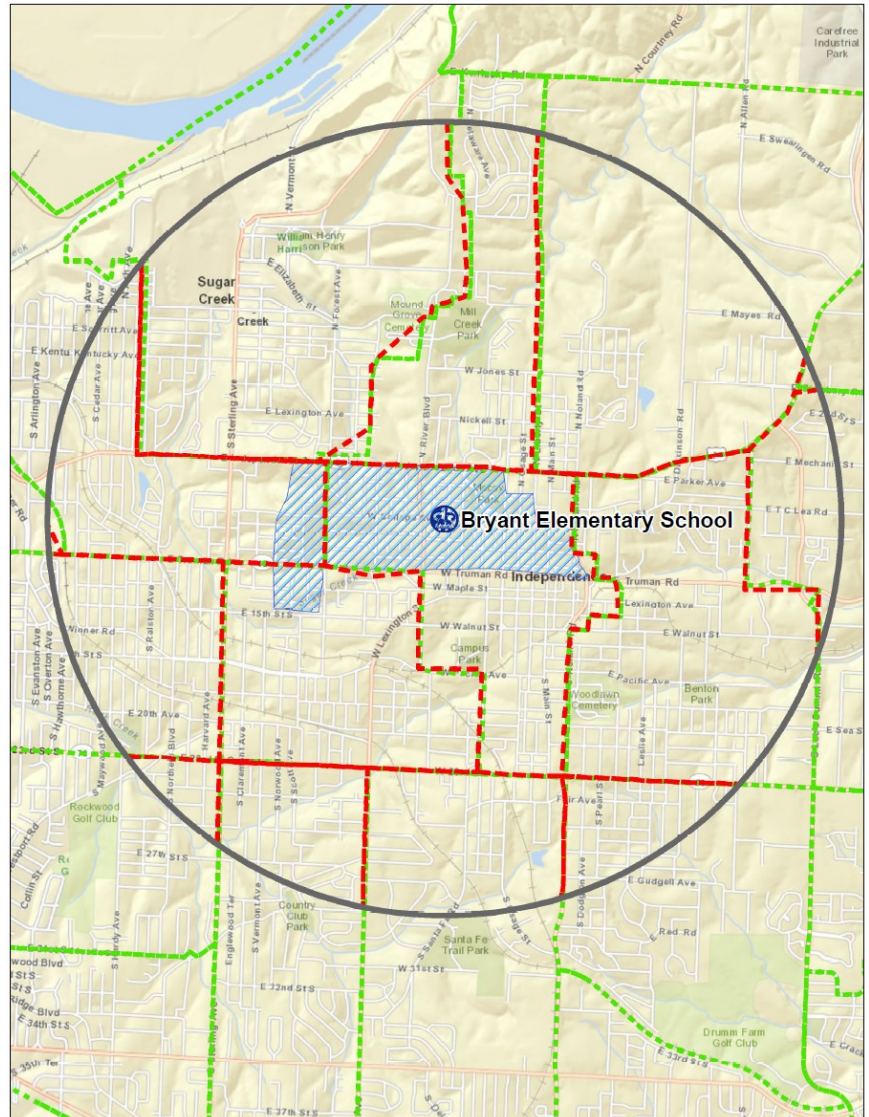
The Community Analysis Zone (CAZ) for the Bryant community was established using Bryant Elementary School as a reference point and includes the area within a two-mile radius of the school (the black circle in the map at right).

The CAZ overlaps the Bryant school boundaries (blue shaded area) and allows for analysis of data about residents, neighborhoods and services that, while not necessarily located within the official school boundaries, nevertheless pertains directly to the community served by the Caring Communities site.

For the purpose of this book the boundaries of the Bryant CAZ and the “Bryant community” are the same, and the terms “CAZ” and “community” are used interchangeably.

Data for the site book was obtained from a number of resources including but not limited to the City of Independence, Mo.; U.S. Census Bureau; Jackson County, Mo.; Missouri Department of Elementary and Secondary Education; Missouri Department of Health and Senior Services; United Way of Greater Kansas City; Missouri Department of Social Services; University of Missouri-Kansas City Center for Economic Information; and University of Michigan National Poverty Center.

Community data was analyzed by census tract (red boundaries) within the CAZ. Census tracts are small, relatively permanent statistical subdivisions of a county delineated by local participants as part of the U.S. Census Bureau's Participant Statistical Areas Program. The U.S. Census Bureau delineated census tracts in situations where no local participant existed or where local or tribal governments declined to participate. Census tracts generally have between 1,500 and 8,000 people, with an optimum size of 4,000 people. (Source: U.S. Census Bureau).



Education

Bryant Elementary

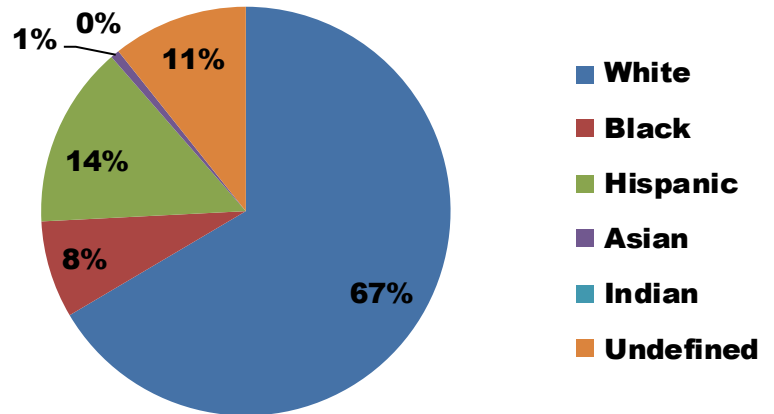
Dr. Jon Pye, Principal

827 W. College, Independence MO 64050

(816) 521-5400

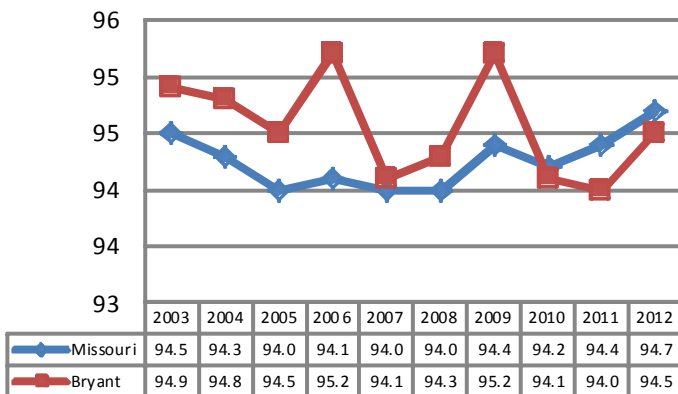
jon_pye@idschools.org

2012 Student Demographics



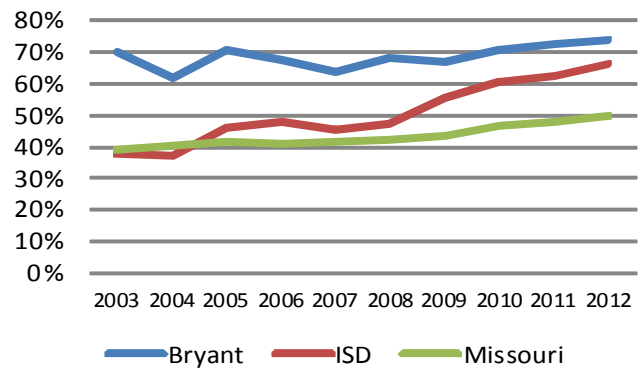
Source: Missouri Department of Elementary and Secondary Education

2012 Student Attendance Rate



Source: Missouri Department of Elementary and Secondary Education

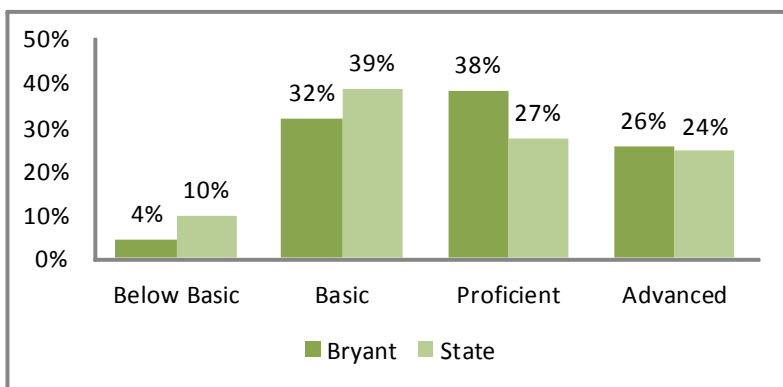
Free/Reduced Lunch



Source: Missouri Department of Secondary and Elementary Education

2012 Missouri Assessment Program (MAP)

5th Grade Science

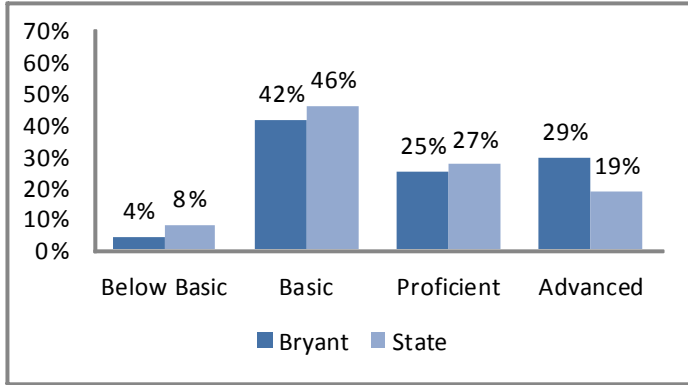


Source: Missouri Department of Elementary and Secondary Education

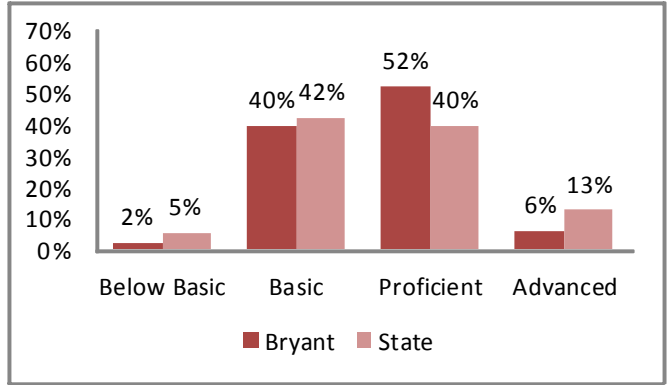
Education

2012 Missouri Assessment Program (MAP), continued

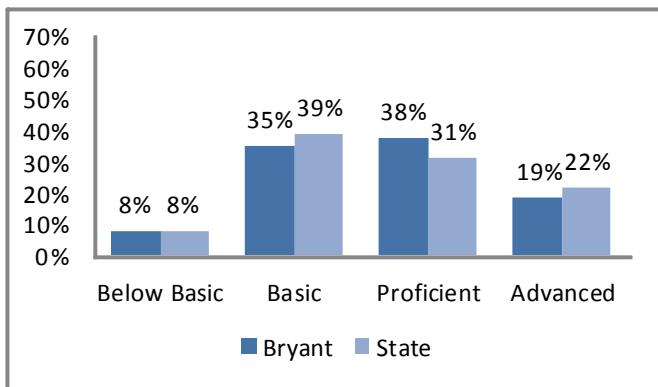
3rd Grade Communication Arts



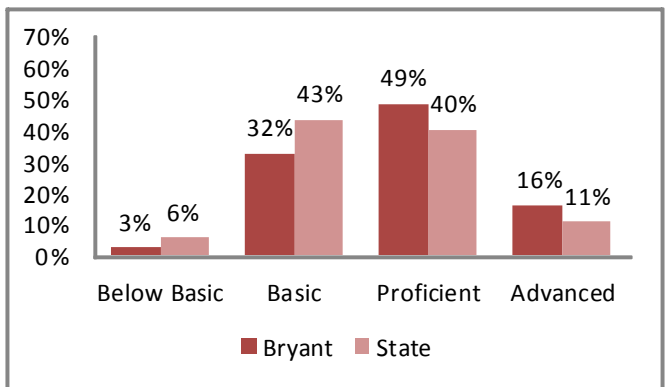
3rd Grade Mathematics



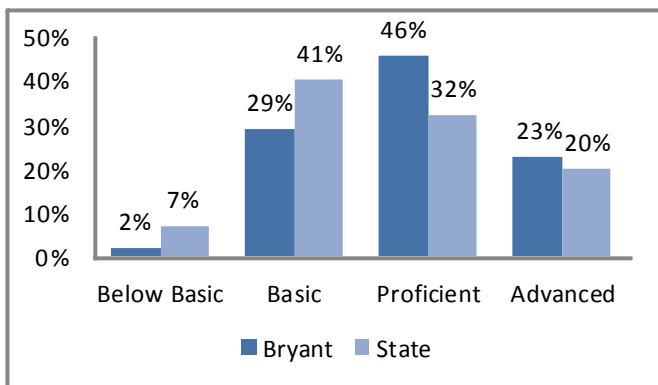
4th Grade Communication Arts



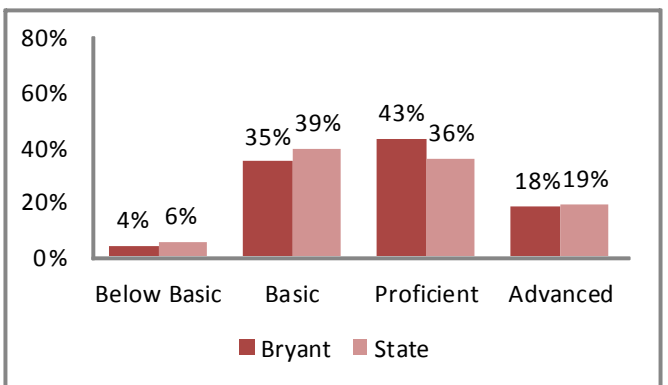
4th Grade Mathematics



5th Grade Communication Arts

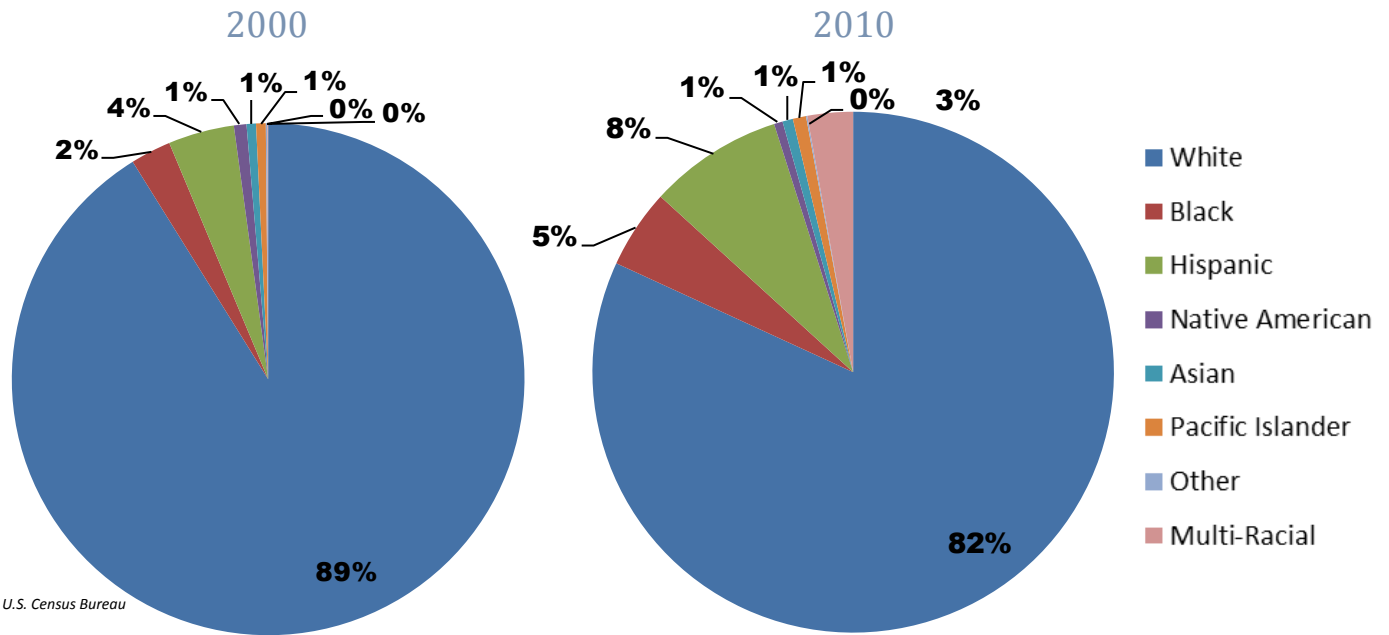


5th Grade Mathematics



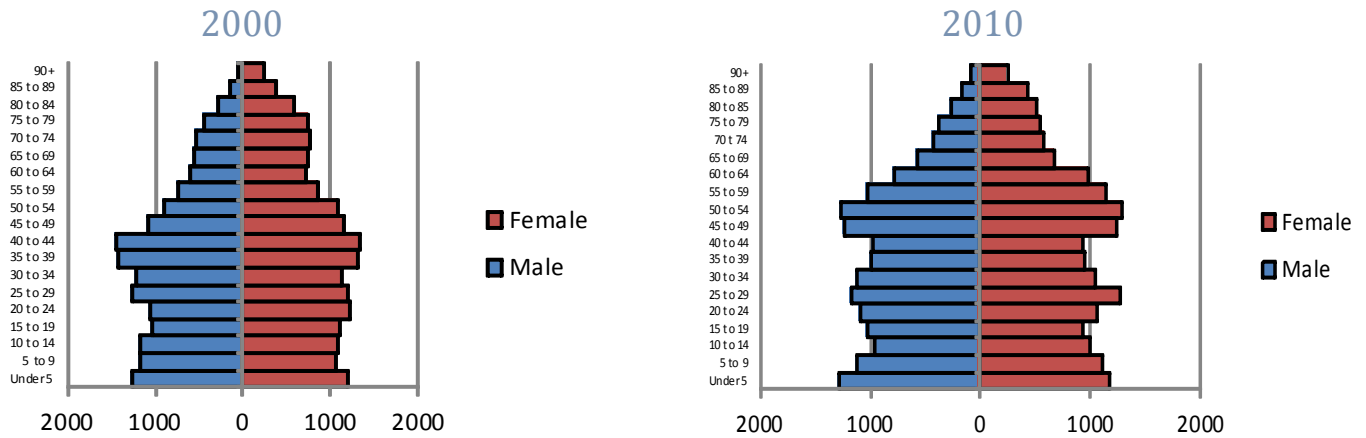
Demographics

Race



Source: U.S. Census Bureau

Age by Sex



Source: U.S. Census Bureau

Family Type with Related Children

	2000	2010	% Change
Total Population	34,292	33,035	-4%
Total Families	8,702	8,000	-8%
Married Families	5,912	4,898	-17%
With Children Under Age 18	2,526	1,949	-23%
Single Father Families	711	858	21%
With Children Under Age 18	469	531	13%
Female Single Parent Families	2,078	2,244	8%
With Children Under Age 18	1,421	1,504	6%

Source: U.S. Census Bureau

Economy

	Bryant	Jackson County
Median Income	\$36,482	\$46,252
Unemployment Rate	10.2%	8.8%

Source: U.S. Census

Poverty

	Bryant	Jackson County
2000	13%	11.9%
2010	19.9%	15.7%

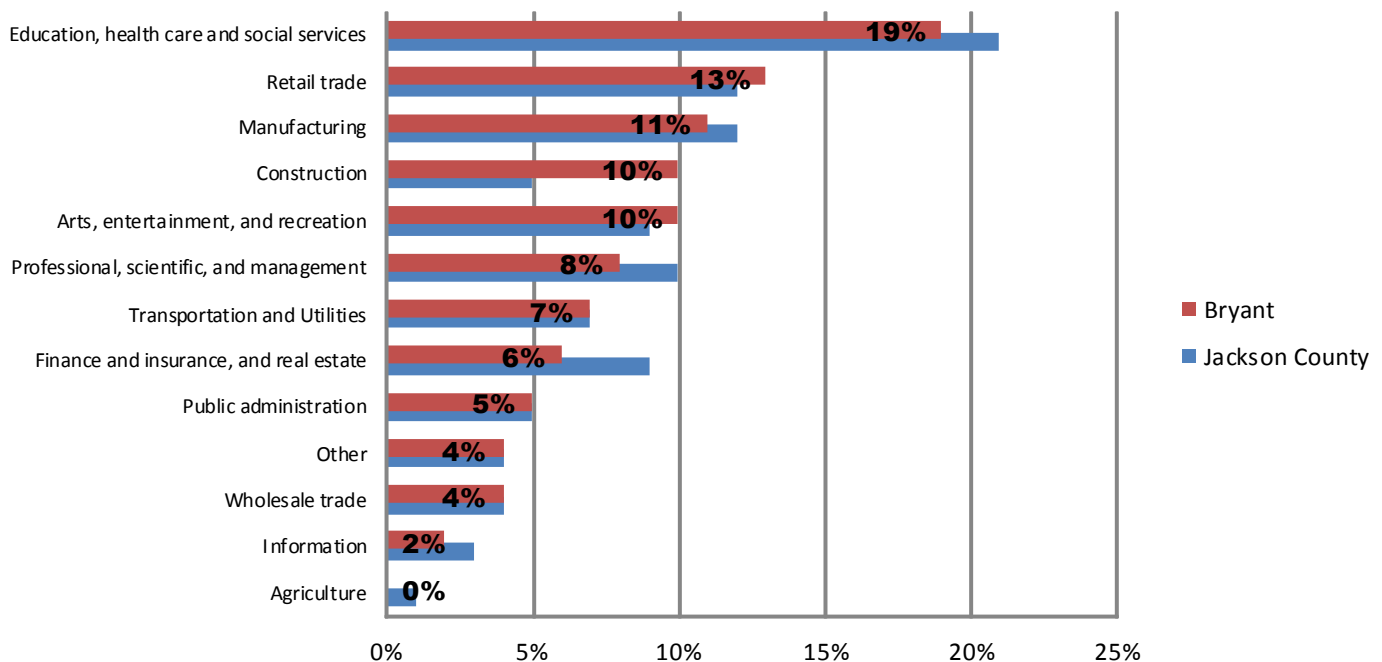
U.S. Census Bureau, 2010 ACS 5 Year Estimates

2010 Poverty Thresholds, Selected Family Types		
Single Individual	Under 65	\$ 11,344
	65 years and Older	\$ 10,458
Single Parent	One Child	\$ 15,030
	Two Children	\$ 17,568
	No Children	\$ 14,602
Two Adults	One Child	\$ 17,552
	Two Children	\$ 22,113
	Three Children	\$ 26,023

Note: The United States determines the official poverty rate using poverty thresholds that are issued each year by the Census Bureau. The thresholds represent the annual amount of cash income minimally required to support families of various sizes. A family is counted as poor if its pretax money income is below its poverty threshold. Money income does not include noncash benefits such as public housing, Medicaid, employer-provided health insurance and food stamps.

Source: National Poverty Center

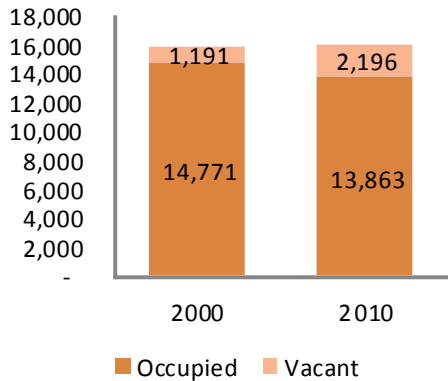
Employment by Industry



U.S. Census Bureau, 2010 ACS 5 Year Estimates

Housing

Vacant Houses



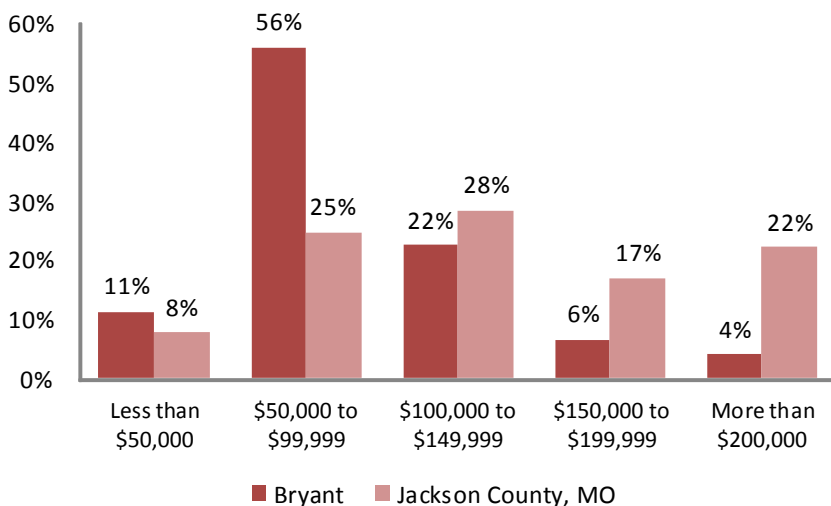
Source: U.S. Census, 2000, 2010

Vacancy Rate

	2000	2010
Bryant	7.0%	13.7%
Jackson County	7.6%	12.0%

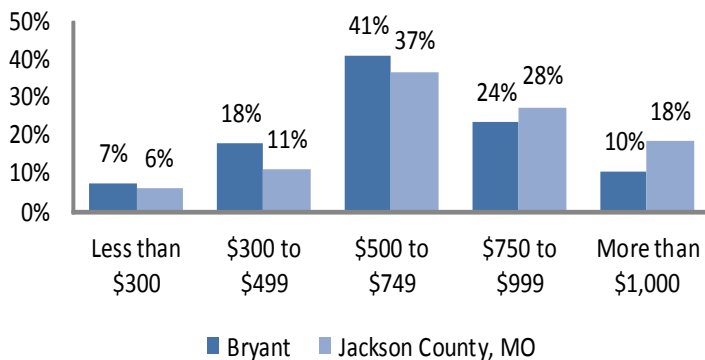
Source: U.S. Census, 2000, 2010

Home Values



Source: U.S. Census, 2010 ACS 5 Year Estimates

Gross Rent



Source: U.S. Census, 2010 ACS 5 Year Estimates

Housing Characteristics	2000 to 2010 Change
Housing Units	1%
Tenure	
Owner	-8%
Renter	-3%
Units Moved into Previous Five Years	-28%
Age of Housing Stock	2010 Percent
Less than 5 Years	1%
Less than 10 Years	4%
Less than 20 Years	6%
Less than 30 Years	10%
Less than 40 Years	21%
More than 50 Years	78%

Source: U.S. Census, 2010 ACS 5 Year Estimates

Community Resources

Parks

				Acres
Benton Park	707 S. Crane St.	Independence	MO	6
Brady Park	900 N. Delaware Ave.	Independence	MO	3
Bundschu Park	11400 E. 9th St. S.	Independence	MO	19
Crysler Stadium	2301 S. Chrysler Ave.	Independence	MO	15
Curtis Park	700 E. Lexington Ave.	Independence	MO	3
Dickinson Park	1700 Dickinson Rd.	Independence	MO	42
Hill Park	2201 S. Maywood Ave.	Independence	MO	20
Hink Park	10900 E. 8th St.	Independence	MO	
Hiram Young Park	215 E. Lexington Ave.	Independence	MO	2
McCoy Park	800 N. Bess Truman Pkwy	Independence	MO	17
Mill Creek Park	1717 N. River Blvd.	Independence	MO	45
Polly's Pop Park	204 N. River Blvd	Independence	MO	2
Rotary Park	10615 E. 24th St.	Independence	MO	15

Source: Independence, MO Dept. of Parks and Recreation

Food Pantries

CENTRAL INDEPENDENCE BAPTIST FOOD PANTRY	112 W. 23rd Street	Independence	MO	64055
CITIZEN'S CIVIC RELIEF COMMISSION - FOOD PANTRY	604 N. Sterling	Sugar Creek	MO	64054
COMMUNITY SERVICES LEAGUE - FAIRMOUNT	800 S. Hardy	Independence	MO	64053
COMMUNITY SERVICES LEAGUE - MAIN OFFICE	404 N. Noland Road	Independence	MO	64050
IMMANUEL BAPTIST CHURCH - FOOD PANTRY	112 W. 23rd St.	Independence	MO	64055
SAINT MARY'S - OUTREACH	600 N. Liberty	Independence	MO	64050
SALVATION ARMY - INDEPENDENCE, MO - FOOD PANTRY	14704 Truman Road	Independence	MO	64050

Source: United Way of Greater Kansas City

Homeless Shelter

SALVATION ARMY - CROSSROADS FAMILY EMERGENCY SHELTER	14704 E Truman Rd.	Independence
--	--------------------	--------------

Source: United Way of Greater Kansas City

Soup Kitchen

FAIRMOUNT COMMUNITY CENTER	608 S. Ash	Independence	MO
LUNCH PARTNERS	709 W. Maple	Independence	MO

Source: United Way of Greater Kansas City

Community Resources

Churches

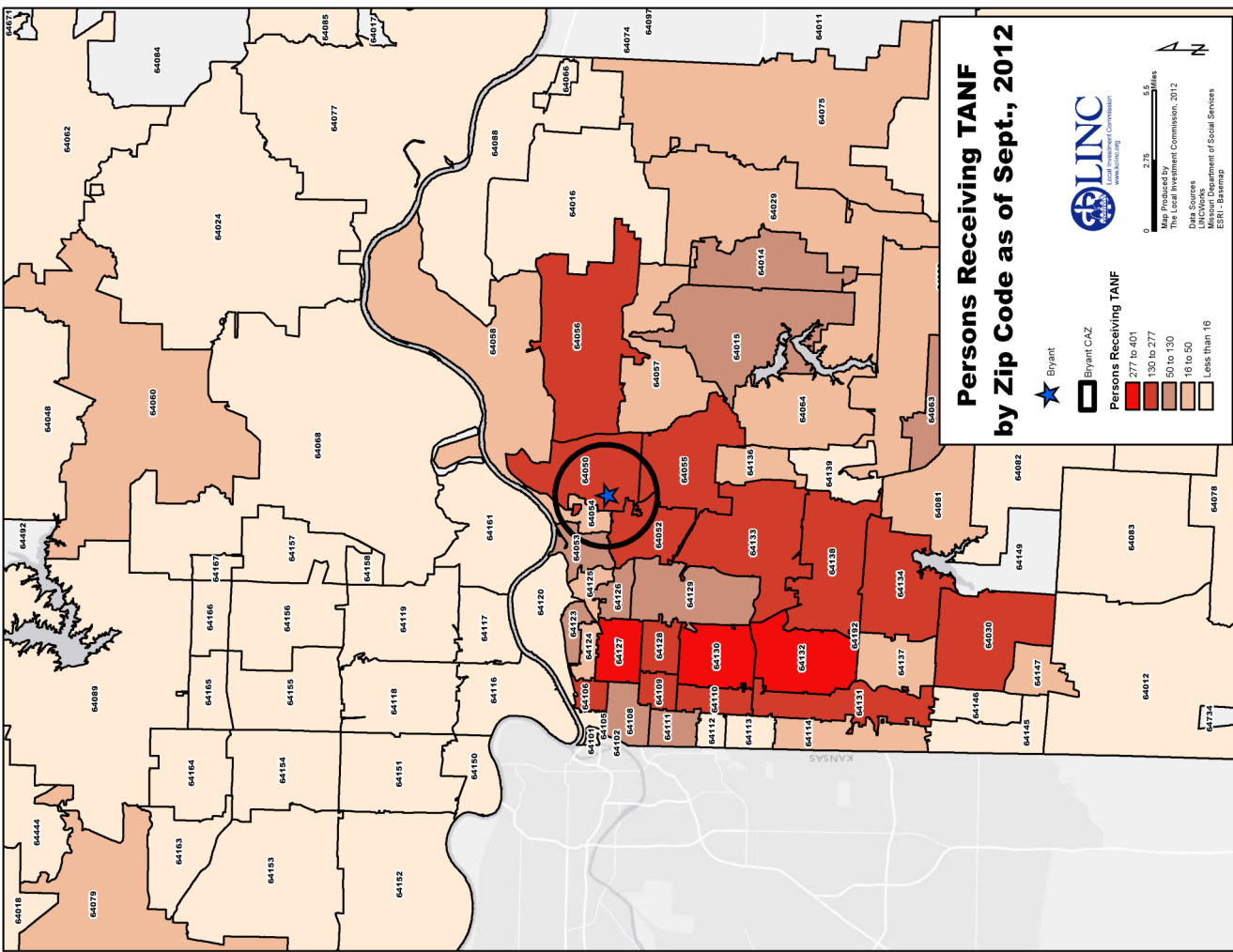
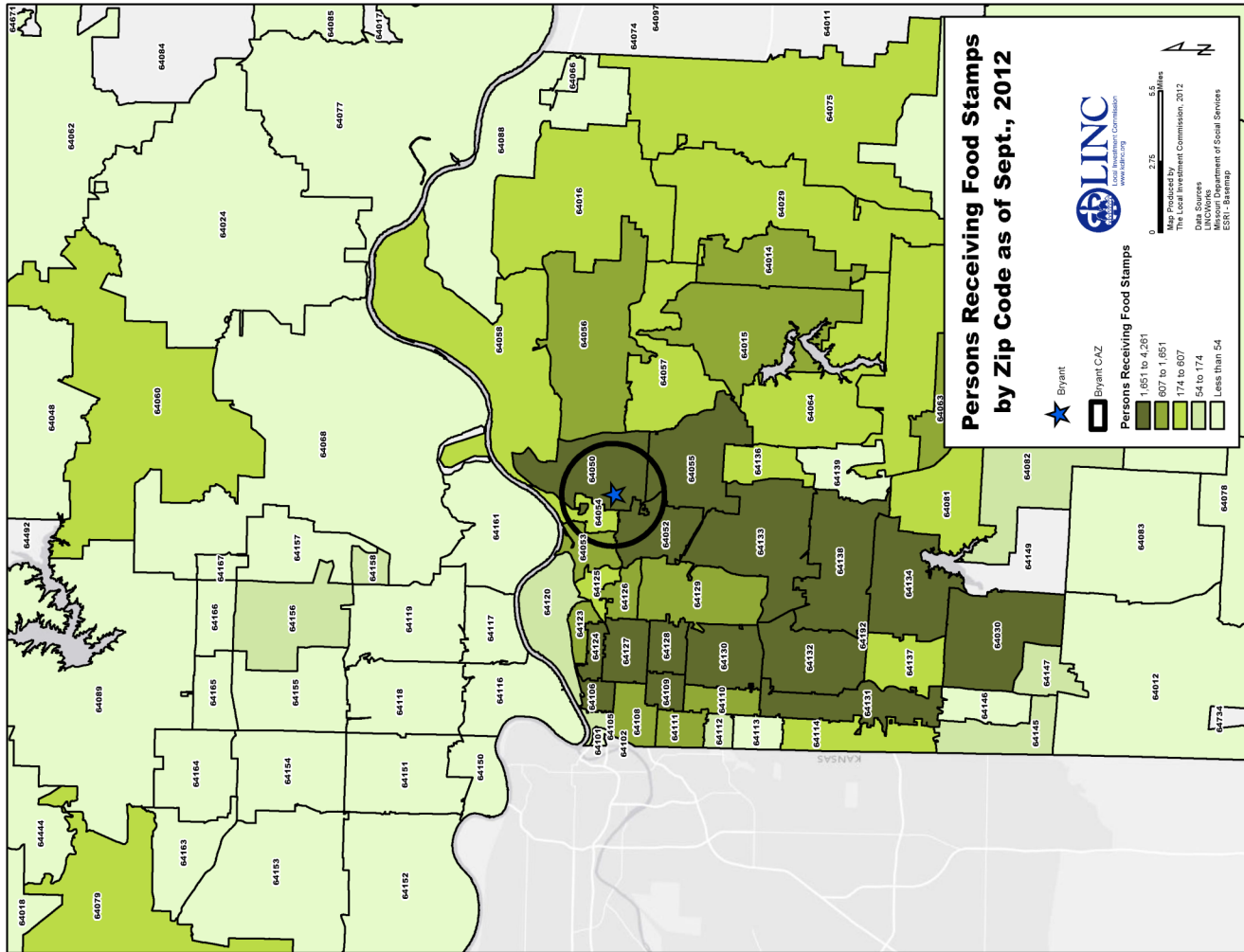
A Place Of Praise	304 E 23rd St S	Independence	MO
Calvary Baptist Church	1915 N Liberty St	Independence	MO
Carlisle Baptist Church	812 S Sterling Ave	Independence	MO
Center Branch	709 W Maple Ave	Independence	MO
Central Assembly Of God	1009 W 23rd St S	Independence	MO
Church Of Christ	601 S Liberty St	Independence	MO
Church Of Christ-Temple Lot	200 S River Blvd	Independence	MO
Church Of Christ-The Elijah	221 W Lexington Ave	Independence	MO
Church of Jesus Christ of Lds	705 W. Walnut St.	Independence	MO
Church of Jesus Christ of Lds	500 W. Pacific Ave.	Independence	MO
Church of Jesus Christ of Lds	709 W Maple	Independence	MO
Church of Jesus Christ of Lds	700 W. Lexington Ave.	Independence	MO
Church Of Jesus Christ	108 S Pleasant St	Independence	MO
Church Of Jesus Christ Of Lds	937 W Walnut St	Independence	MO
Church Of Jesus Christ Restor	1527 E Us Highway 24	Independence	MO
Church Of Jesus CHRIST-Lds	517 W Walnut St	Independence	MO
Community of Christ	600 N. Crysler Ave.	Independence	MO
Community of Christ	1027 W. College St.	Independence	MO
Community of Christ	126 S. Forest Ave.	Independence	MO
Community of Christ	904 N River Blvd.	Independence	MO
Community of Christ	1818 N. River Blvd.	Independence	MO
Community of Christ	800 S. Saville Ave.	Independence	MO
Community Of Christ	1001 W Walnut St	Independence	MO
Community Of Christ	1012 W Lexington Ave	Independence	MO
Community Of Christ	1021 W College St	Independence	MO
Community Of Christ	1137 S Pearl St	Independence	MO
Community Of Christ	1316 S Osage St	Independence	MO
Community Of Christ	1706 S Northern Blvd	Independence	MO
Community Of Christ	220 W Moore St	Independence	MO
Community Of Christ	411 N Lees Summit Rd	Independence	MO
Community Of Christ	416 N Liberty St	Independence	MO
Community Of Christ	500 W Pacific Ave	Independence	MO
Conference Of Restoration	500 N Union St	Independence	MO
Daystar Outreach Ministries	2502 N Liberty St	Independence	MO
Englewood Assembly Of God	10628 E Winner Rd	Independence	MO
Fairmount Christian Church	641 S Ash Ave	Independence	MO
Fairmount Christian Fellowship	712 S Northern Blvd	Independence	MO
Fellowship Baptist Church	901 E 23rd St S	Independence	MO
First Baptist Church	500 W Truman Rd	Independence	MO
First Christian Church	125 S Pleasant St	Independence	MO
First Church Of God	220 E Elm St	Independence	MO
First Church Of The Nazarene	10717 E 23rd St S	Independence	MO
First Presbyterian Church	100 N Pleasant St	Independence	MO
First United Methodist Church	400 W Maple Ave	Independence	MO
Full Gospel Evangelistic	10537 E 6th St S	Independence	MO
Gethsemane Baptist Church	1837 S Sterling Ave	Independence	MO
Iglesia Restaurada	1215 W 24th St S	Independence	MO
Immanuel Baptist Church	112 W 23rd St S	Independence	MO
Immanuel Baptist Church	1123 S Liberty St	Independence	MO

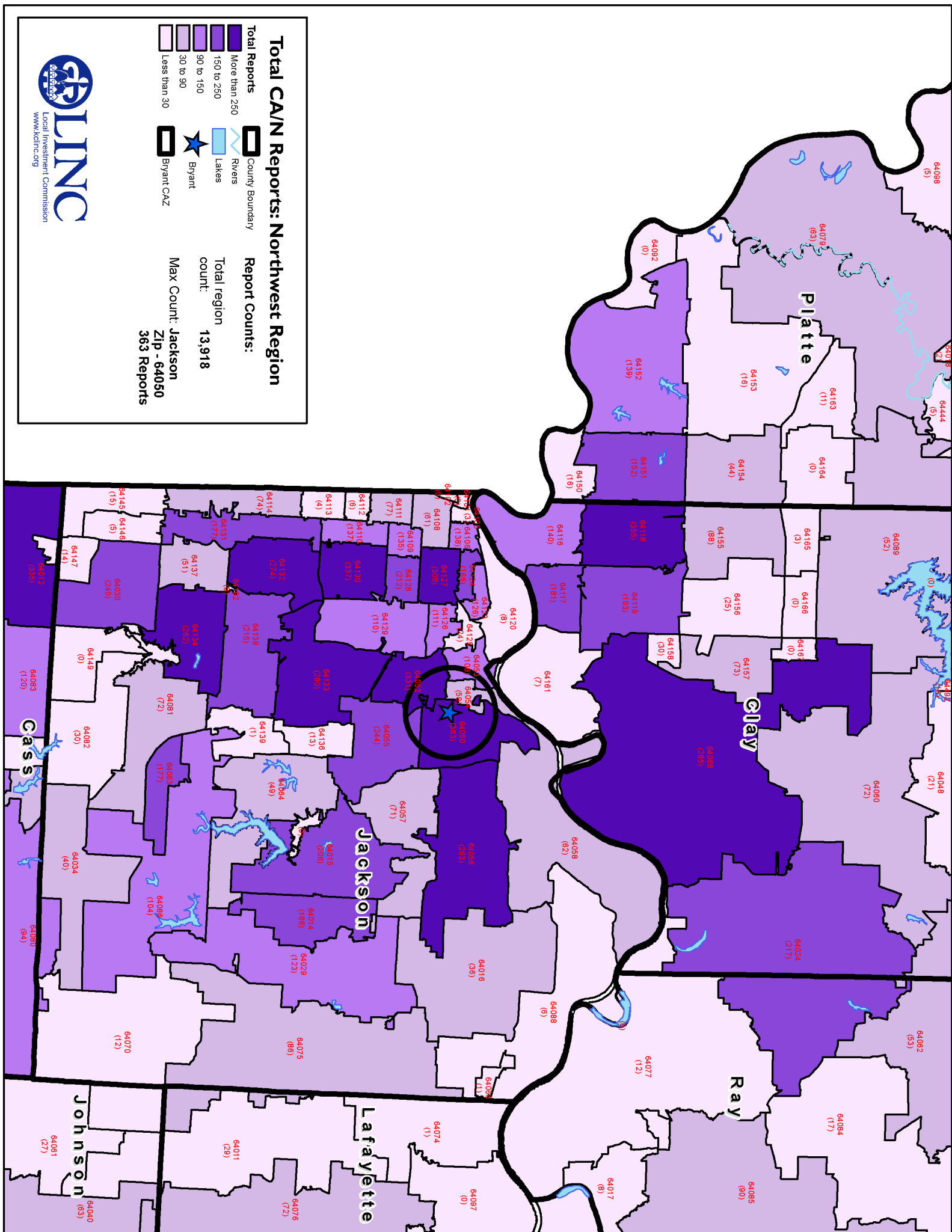
Community Resources

Churches (cont.)

In His Name Ministries	304 E. 23rd St.	Independence	MO
Jehovah's Witnesses	500 Lees Summit Rd.	Independence	MO
Jesucristo Roca-La Eternidad	10300 E. Kentucky Rd.	Independence	MO
Lighthouse Life Application	11415 E 23rd St S	Independence	MO
Maywood Baptist Church	10505 E Winner Rd	Independence	MO
Messiah Lutheran Church	613 S Main St	Independence	MO
Mt Wash Church Of God	2320 N Liberty St	Independence	MO
New Covenant Ministries	532 S Main St	Independence	MO
New Harvest Church Of God	1501 S Lees Summit Rd	Independence	MO
Northern Boulevard UMC	1800 S Northern Blvd	Independence	MO
Outreach Restoration Branch	723 S Crysler Ave	Independence	MO
Palestine Missionary Baptist	227 E. College St.	Independence	MO
Palestine Missionary Baptist	138 E Farmer St	Independence	MO
Regeneration Church	1221 Baker Dr.	Independence	MO
Remnant Church-JSUS Crst-Lds	700 W Lexington Ave	Independence	MO
Reorg Ch Of Jesus Christ Lds	1308 N River Blvd	Independence	MO
Reorg Ch Of Jesus Christ Lds	221 W Lexington Ave	Independence	MO
Restoration Church Of Jesus	919 S Delaware St	Independence	MO
Restoration Church-Lds	801 W 23rd St S	Independence	MO
River Boulevard Baptist Church	3212 N River Blvd	Independence	MO
Rivers Of Living Water	215 N Sterling Ave	Independence	MO
Salvation Army	14700 E Truman Rd	Independence	MO
Second Baptist Church	116 E White Oak St	Independence	MO
Seventh-Day Adventist Church	13305 Kemper Ave	Independence	MO
Spirit Life Worship Ctr	1312 E Us Highway 24	Independence	MO
St Ann's Catholic Church	10109 Lexington Ave	Independence	MO
St Cyril's Church	11231 Chicago Ave	Independence	MO
St Luke Byzantine Catholic Chr	11413 Chicago St.	Sugar Creek	MO
St Luke's United Church-Christ	727 N Main St	Independence	MO
St. Mary's Church	600 N. Liberty St.	Independence	MO
St Paul AME Church	200 E Lexington Ave	Independence	MO
Stone Church	1012 W. Lexington Ave	Independence	MO
Sugar Creek Church Of Christ	10800 Kentucky Ave	Sugar Creek	MO
Sugar Creek United Methodist	415 N Sterling Ave	Independence	MO
The Church of Jesus Christ Faith Restoration Branch	1100 W. Truman Rd	Independence	MO
The Church of Jesus Christ Faith Restoration Branch	1100 W. Truman Rd	Independence	MO
Trinity Episcopal Church	409 N Liberty St	Independence	MO
Trinity Presbyterian Church	1400 W Sheley Rd	Independence	MO
Waldo Ave Restoration Branch	819 W Waldo Ave	Independence	MO
Word of Truth Ministries	1525 S. Noland Rd.	Independence	MO
World Church Of Jesus Christ	515 S Liberty St	Independence	MO

Source: Yellowpages





Total CA/N Reports: Northwest Region

Total Reports

- More than 250
- 150 to 250
- 90 to 150
- 30 to 90
- Less than 30

Report Counts:

Total region count: **13,918**

Max Count: **Zip - 64050**
363 Reports

- County Boundary
- Rivers
- Lakes
- Bryant
- Bryant CAZ



Data Resources

City of Independence, Mo.

Jackson County, Mo.

Independence, Mo. Department of Parks and Recreation

Kansas City Free Health Clinic

Mid-America Regional Council

Missouri Department of Elementary and Secondary Education

Missouri Department of Social Services

Missouri Department of Health and Human Services

Independence Public School District

United States Census Bureau

United States Department of Housing and Urban Development

United States Department of Labor

United Way of Greater Kansas City

University of Missouri-Kansas City Center for Economic Information

University of Michigan National Poverty Center

**Site Book developed By:
Local Investment Commission (LINC)
2013**

**All maps, photographs, and tables were developed and/or are property of LINC, unless otherwise noted,
and must be cited for external use.**

**For more information on LINC, please visit:
www.kclinc.org**