

Dobbs

Caring Communities

Data Book **March 2013**

A review and analysis of the community surrounding the Caring Communities site located at Dobbs Elementary School in Kansas City, Mo.



Introduction

About Caring Communities

Caring Communities was developed by the Local Investment Commission (LINC) to fulfill the role once played by the courthouse square: a place where the community gathers together, shares ideas, and holds neighborhood events. The growth of Caring Communities reflects increasing national interest in creating “community schools.”

The LINC Caring Communities effort, which began in 1992, has grown to 80 sites in seven school districts in Kansas City and Jackson County, MO. LINC’s school district partners include Kansas City, Independence, Fort Osage, North Kansas City, Hickman Mills, Grandview and Center. Other partners include charter schools, local government, state agencies, and community organizations.

What is a Community School?

A community school is both a place and a set of partnerships between the school and other community stakeholders which leads to improved student learning, stronger families and healthier communities. Community schools are open to everyone—all day, including evenings and weekends. Community-based organizations or public institutions often work as lead agencies in community schools, helping to mobilize community assets and support students success.

Coalition for Community Schools
www.communityschools.org

About This Book

The Dobbs Caring Communities Data Book is intended to provide useful information for decision-makers of the Dobbs community — parents, neighbors, site council members, staff and the general public. We hope the facts, figures and resources contained in this book will help these decision-makers to better understand their neighborhoods and identify needs and opportunities for better coordination of services. We hope this book will help build on the success of Caring Communities and help it thrive in the future.

To request additional copies of this book, or to suggest improvements for future editions of this book, contact the Dobbs Caring Communities Site Coordinator. The book is also available to download for free at www.kclinc.org/dobbs



Dobbs Caring Communities **Established 2007**

Jaelean Wofford, Site Coordinator
 9400 Eastern, Kansas City, MO 64138
 (816) 316-7800
jwofford@kclinc.org

Community Analysis Zone (CAZ)

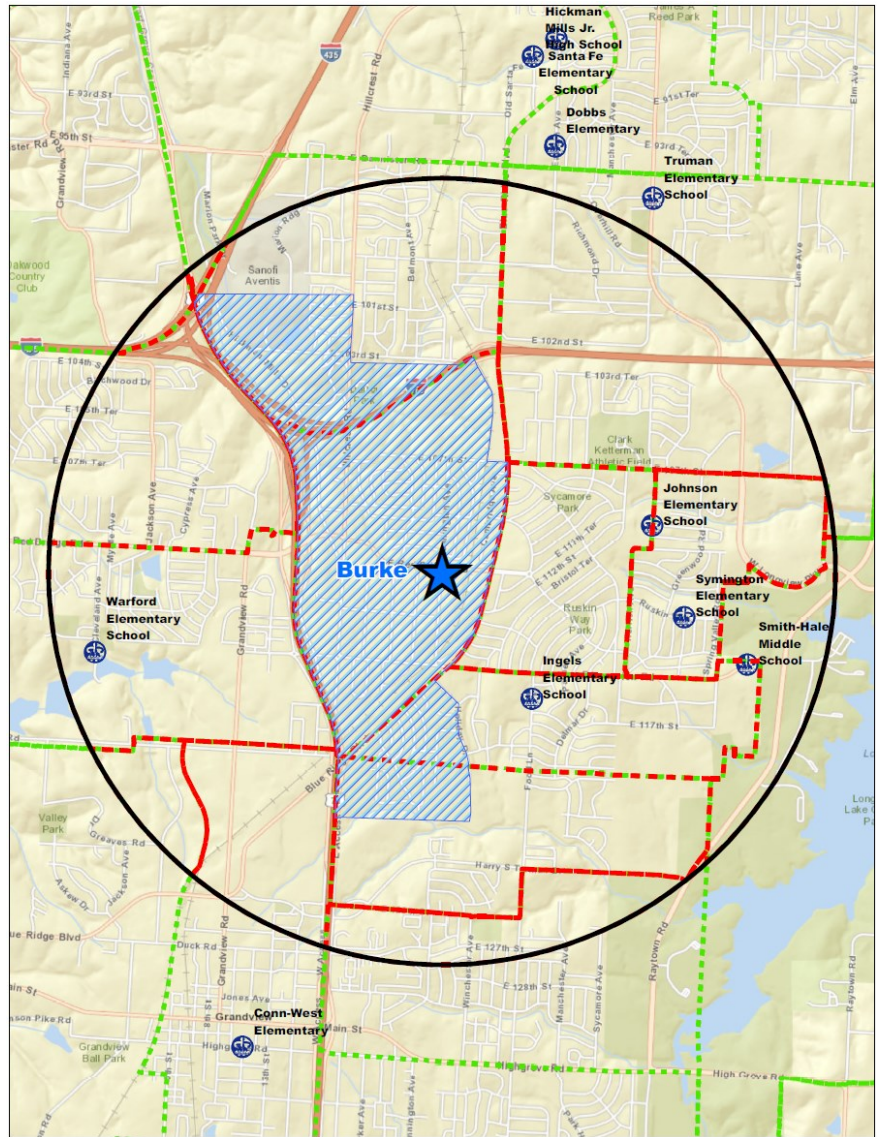
The Community Analysis Zone (CAZ) for the Dobbs community was established using Dobbs Elementary as a reference point and includes the area within a two-mile radius of the school (the black circle in the map at right). The school catchment area is displayed by the white and blue striped area.

The CAZ overlaps the school boundaries (blue shaded area) and allows for analysis of data about residents, neighborhoods and services within the community served by the Caring Communities site.

For the purpose of this book the boundaries of the Dobbs CAZ and the “Dobbs community” are the same, and the terms “CAZ” and “community” are used interchangeably.

Data for the site book was obtained from a number of resources including but not limited to the City of Kansas City, Mo.; U.S. Census Bureau; Jackson County, Mo.; Missouri Department of Elementary and Secondary Education; Missouri Department of Health and Senior Services; United Way of Greater Kansas City; Missouri Department of Social Services; University of Missouri-Kansas City Center for Economic Information; and University of Michigan National Poverty Center.

Community data was analyzed by census tract (red boundaries) within the CAZ. Census tracts are small, relatively permanent statistical subdivisions of a county delineated by local participants as part of the U.S. Census Bureau's Participant Statistical Areas Program. The U.S. Census Bureau delineated census tracts in situations where no local participant existed or where local or tribal governments declined to participate. Census tracts generally have between 1,500 and 8,000 people, with an optimum size of 4,000 people. (Source: U.S. Census Bureau.)



Education

Dobbs Elementary

Total 2012 Enrollment: 437

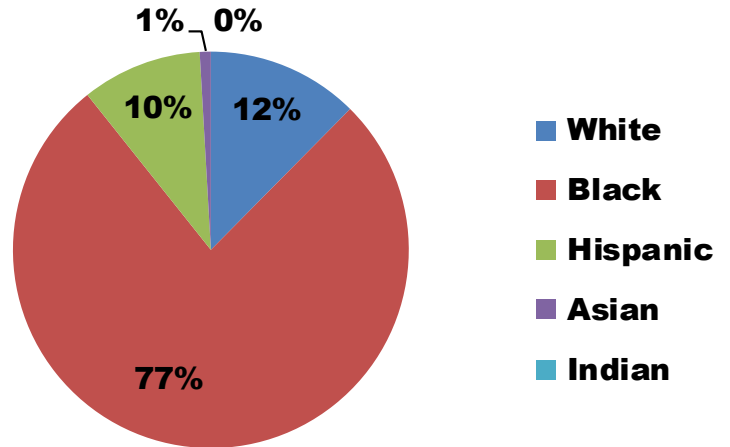
Mr. Rick Wadlow, Principal

9400 Eastern, Kansas City, MO 64138

(816) 316-7800

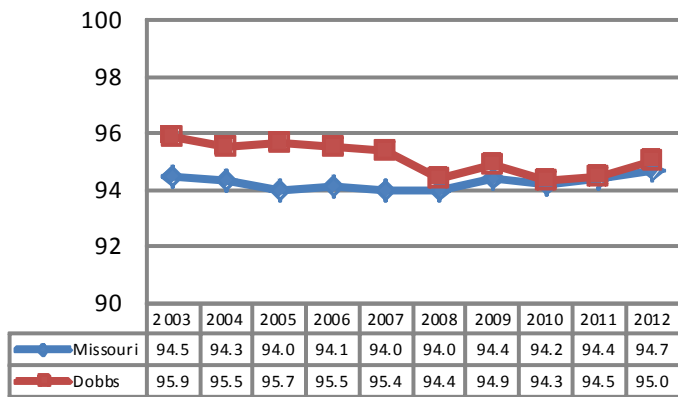
rickw@hickmanmills.org

2012 Student Demographics



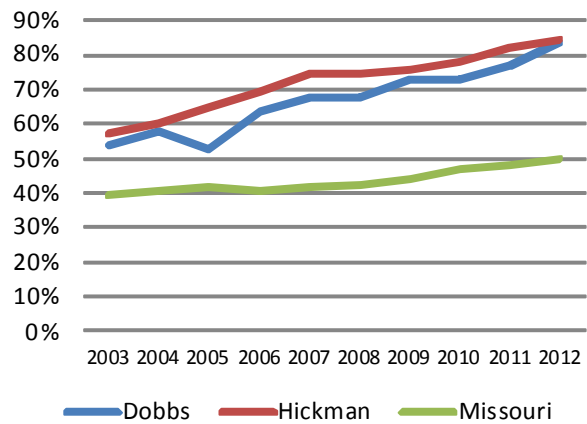
Source: Missouri Department of Elementary and Secondary Education

2012 Student Attendance Rate



Source: Missouri Department of Elementary and Secondary Education

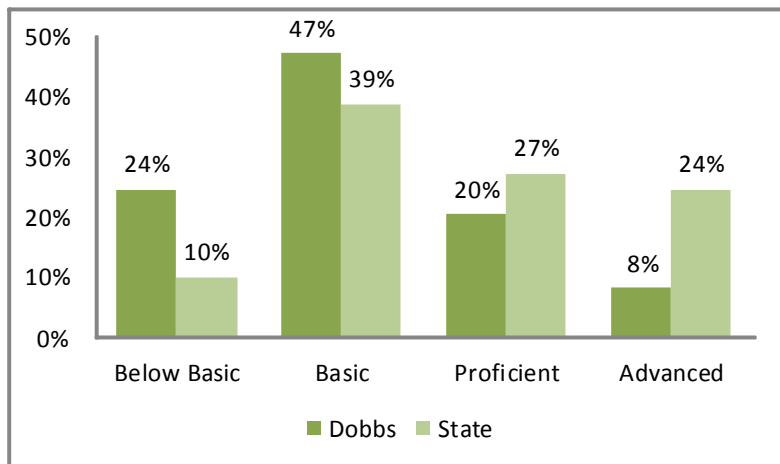
Free/Reduced Lunch



Source: Missouri Department of Secondary and Elementary Education

2012 Missouri Assessment Program (MAP)

5th Grade Science

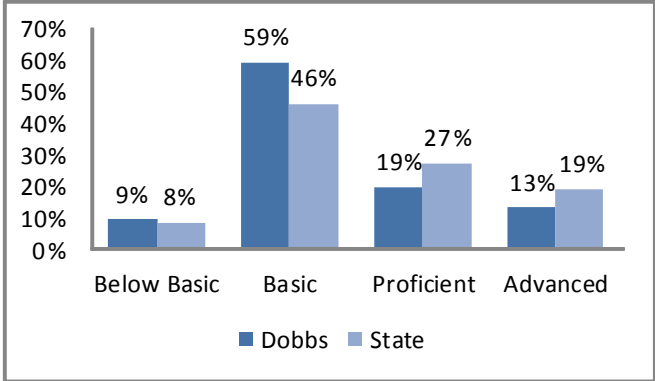


Source: Missouri Department of Elementary and Secondary Education

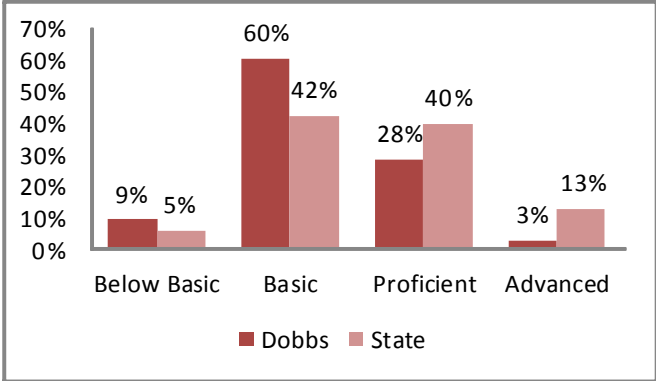
Education

2012 Missouri Assessment Program (MAP), continued

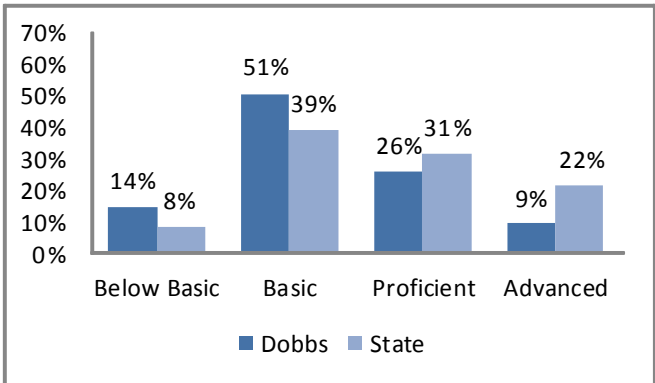
3rd Grade Communication Arts



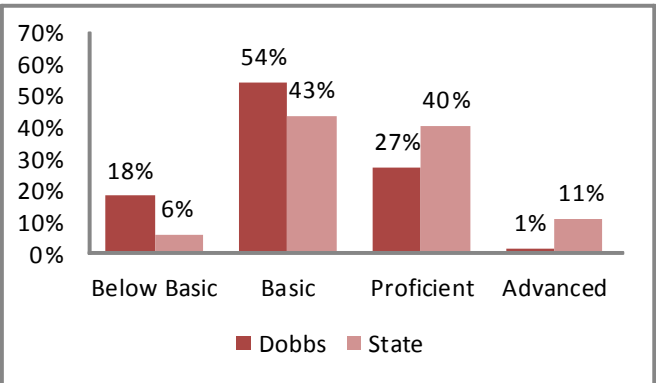
3rd Grade Mathematics



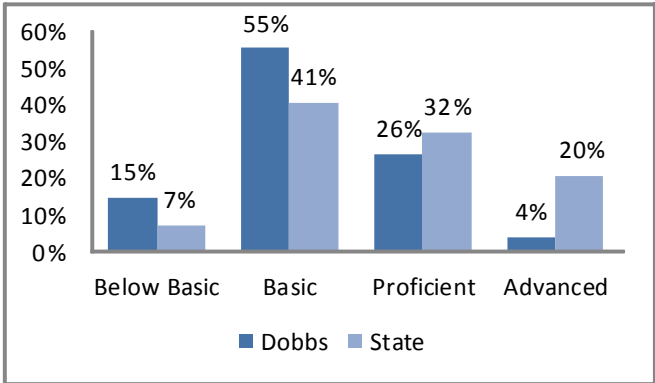
4th Grade Communication Arts



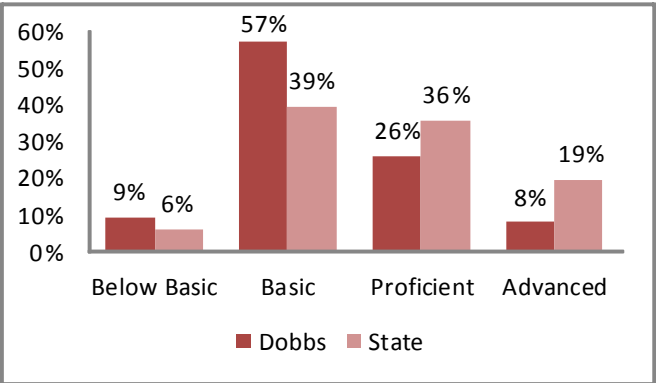
4th Grade Mathematics



5th Grade Communication Arts



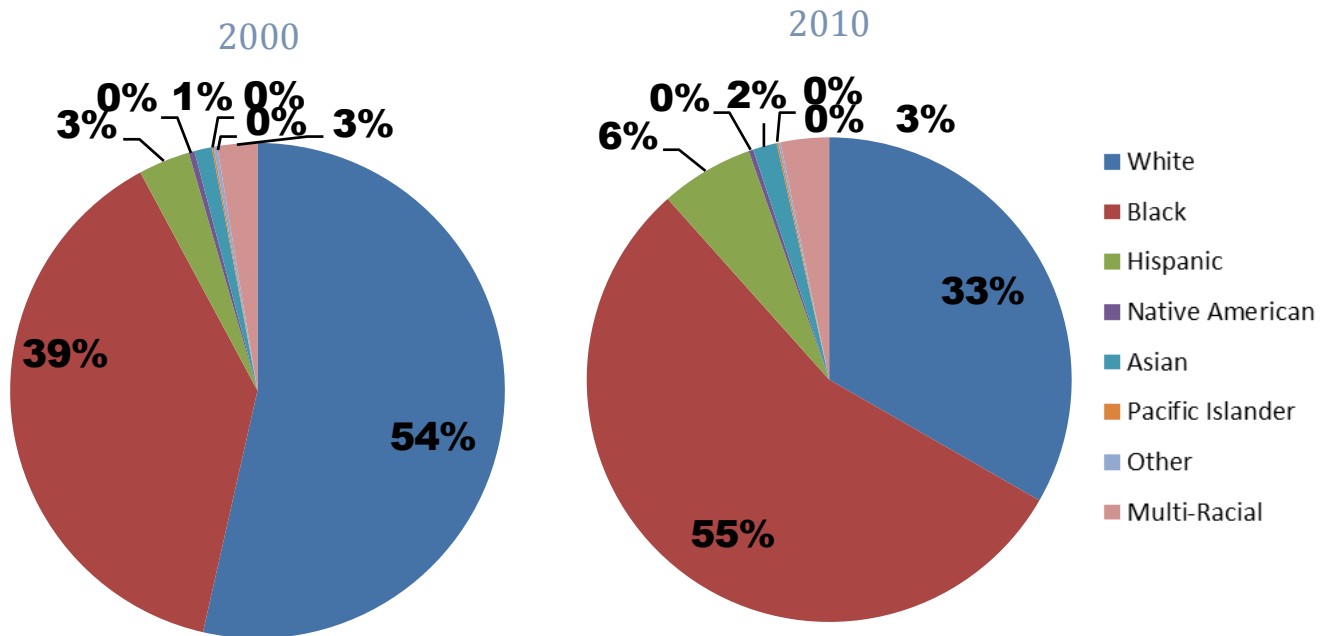
5th Grade Mathematics



Source: Missouri Department of Elementary and Secondary Education

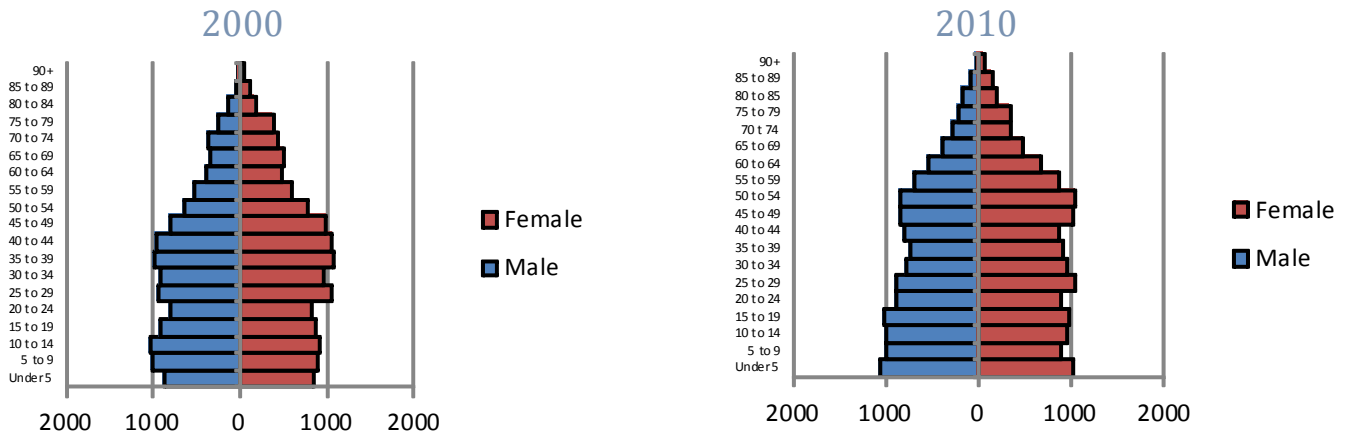
Demographics

Race



Source: U.S. Census Bureau

Age by Sex



Source: U.S. Census Bureau

Family Type with Related Children

	2000	2010	% Change
Total Population	24,981	26,074	4%
Total Families	6,540	6,612	1%
Married Families	4,377	3,569	-18%
With Children Under Age 18	2,020	1,505	-25%
Single Father Families	450	634	41%
With Children Under Age 18	266	380	43%
Female Single Parent Families	1,713	2,409	41%
With Children Under Age 18	1,208	1,693	40%

Source: U.S. Census Bureau

Economy

	Dobbs	Jackson County
Median Income	\$26,744	\$46,252
Unemployment Rate	11.1%	8.8%

Source: U.S. Census

Poverty

	Dobbs	Jackson County
2000	8.4%	11.9%
2010	16.7%	15.7%

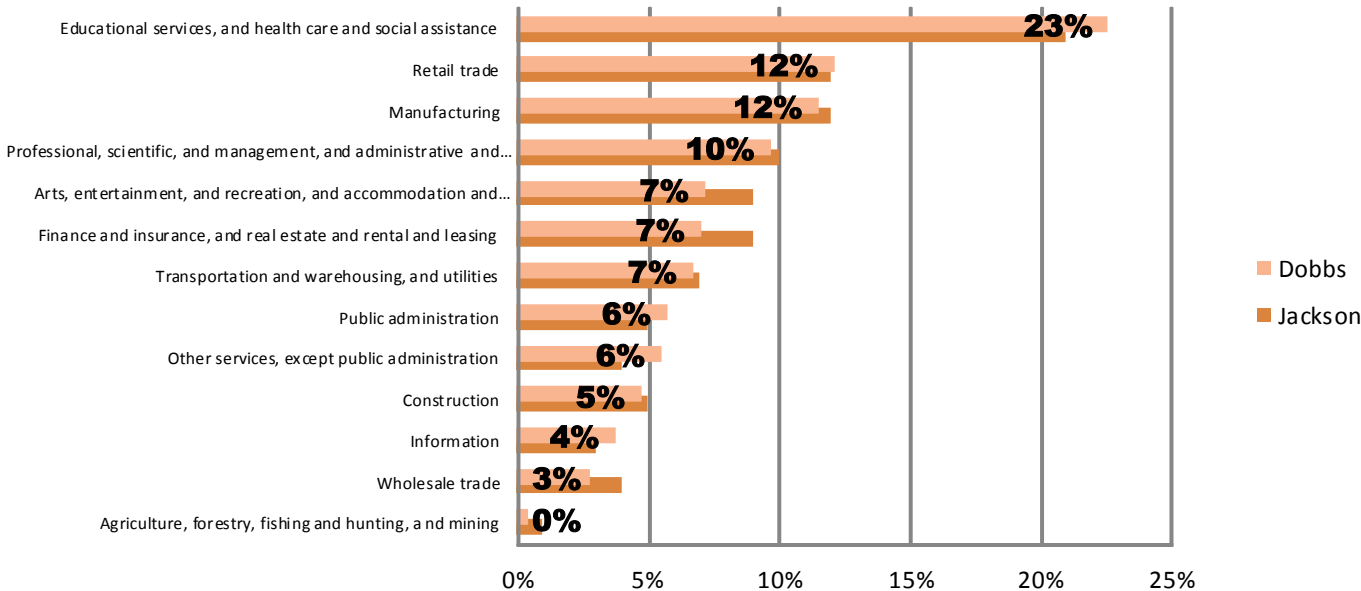
U.S. Census Bureau, 2010 ACS 5 Year Estimates

2010 Poverty Thresholds, Selected Family Types		
Single Individual	Under 65	\$ 11,344
	65 years and Older	\$ 10,458
Single Parent	One Child	\$ 15,030
	Two Children	\$ 17,568
	No Children	\$ 14,602
Two Adults	One Child	\$ 17,552
	Two Children	\$ 22,113
	Three Children	\$ 26,023

Note: The United States determines the official poverty rate using poverty thresholds that are issued each year by the Census Bureau. The thresholds represent the annual amount of cash income minimally required to support families of various sizes. A family is counted as poor if its pretax money income is below its poverty threshold. Money income does not include noncash benefits such as public housing, Medicaid, employer-provided health insurance and food stamps.

Source: National Poverty Center

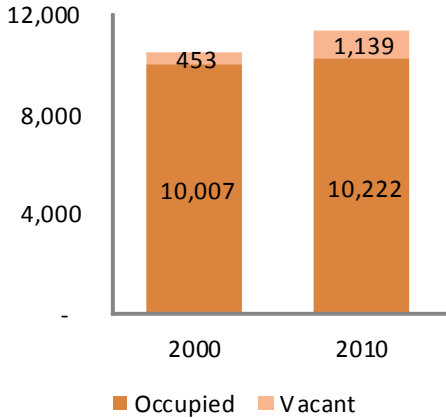
Employment by Industry



U.S. Census Bureau, 2010 ACS 5 Year Estimates

Housing

Vacant Houses



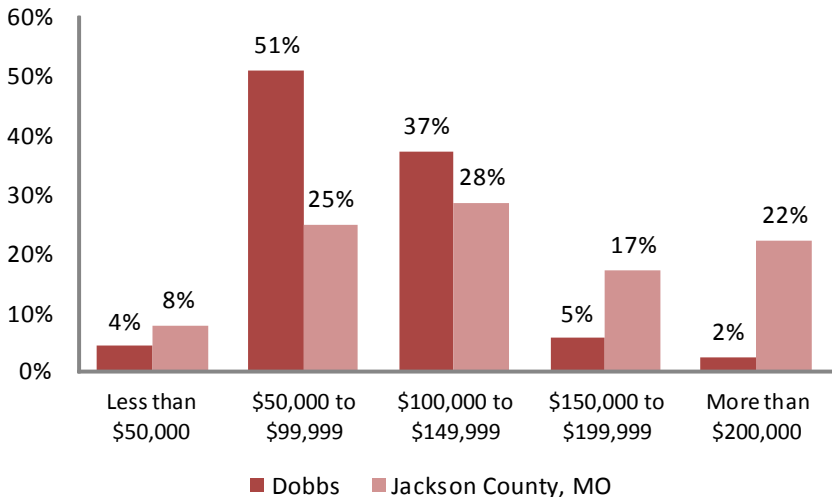
Source: U.S. Census, 2000, 2010

Vacancy Rate

	2000	2010
Dobbs	4.3%	10.0%
Jackson County	7.6%	12.0%

Source: U.S. Census, 2000, 2010

Home Values

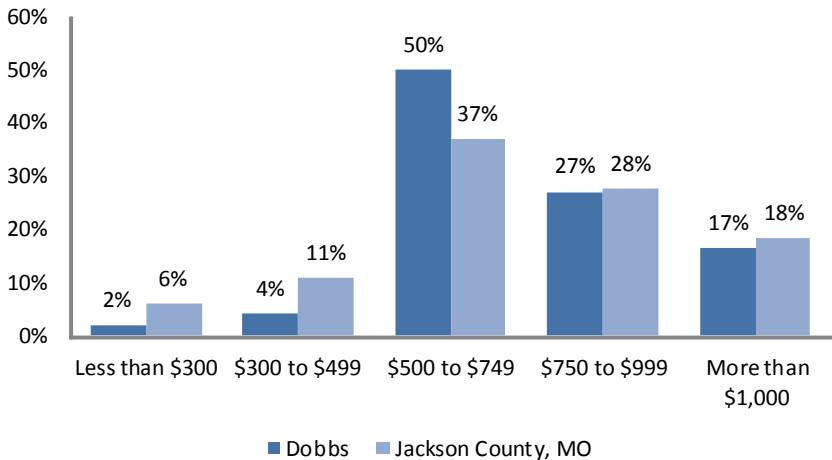


Source: U.S. Census, 2010 ACS 5 Year Estimates

Housing Characteristics	2000 to 2010 Change
Housing Units	9%
Tenure	
Owner	-7%
Renter	21%
Units Moved into Previous Five Years	-21%
Age of Housing Stock	2010 Percent
Less than 5 Years	1%
Less than 10 Years	2%
Less than 20 Years	6%
Less than 30 Years	15%
Less than 40 Years	34%
More than 50 Years	66%

Source: U.S. Census, 2010 ACS 5 Year Estimates

Gross Rent



Source: U.S. Census, 2010 ACS 5 Year Estimates

Community Resources

Parks

		Acres
BANNISTER PARK	9800 James A. Reed Road	13.67
CLARK-KETTERMAN ATHLETIC FIELD	E. 107th St. & Skiles Ave.	35.51
DARTER, JERRY, PARK	E. 105th St. & Hillcrest Road	24.11
EWING PARK	E. 107th St. & Ewing Ave.	0.28
FRENCH TRACT	Bannister Road (95th St.	12.65
REED, JAMES A., PARK	E. 89th St. & James A. Reed Road	12.13
SCHUMACHER PARK	6201 E. 93rd St.	1.30
SWOPE, THOMAS H., PARK	Swope Parkway & Meyer Boulevard	1,805.00
SYCAMORE PARK	E. 108th St. & Sycamore Ave.	8.60
WHITE OAK PARK	E. 89th St. & Crescent Ave.	24.67
WOODGATE PARK	E. 97th St. & Elm Ave.	6.35

Source: City of Kansas City Dept. of Parks and Recreation

Food Pantry

COMMUNITY ASSISTANCE COUNCIL	10901 Blue Ridge	Kansas City	MO
ISLAMIC SOCIETY OF GREATER KANSAS CITY	8501 E. 99th Street	Kansas City	MO
SAINT REGIS FOOD PANTRY	8941 James A. Reed Road	Kansas City	MO

Source: United Way of Greater Kansas City

Community Center

Hillcrest	10401 Hillcrest Road	Kansas City	MO
-----------	----------------------	-------------	----

Source: City of Kansas City Dept. of Parks and Recreation

Nursing Home

BLUE RIDGE NURSING HOME	7505 EAST 87TH ST	KANSAS CITY	MO
JEANNE JUGAN CENTER	8745 JAMES A REED ROAD	KANSAS CITY	MO

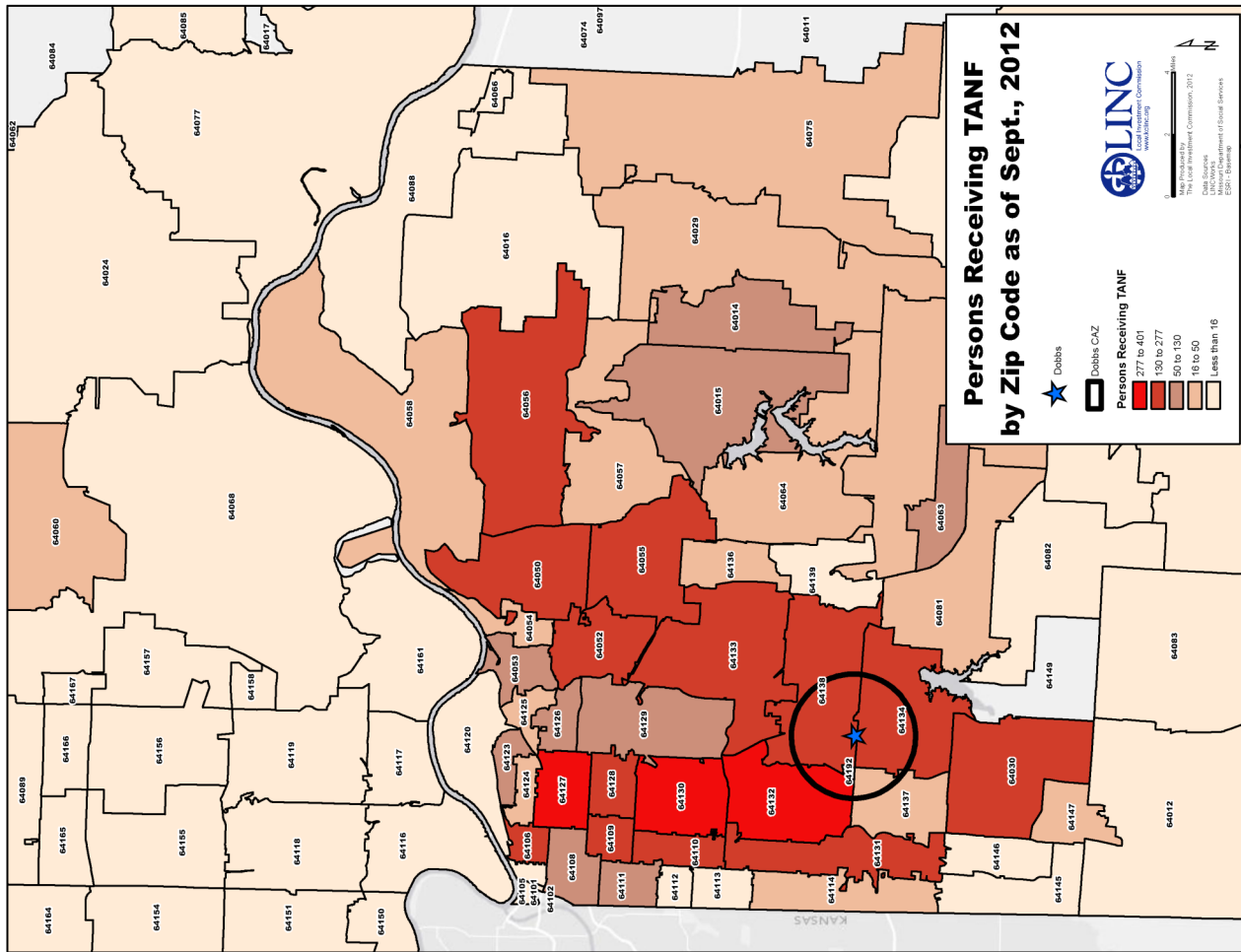
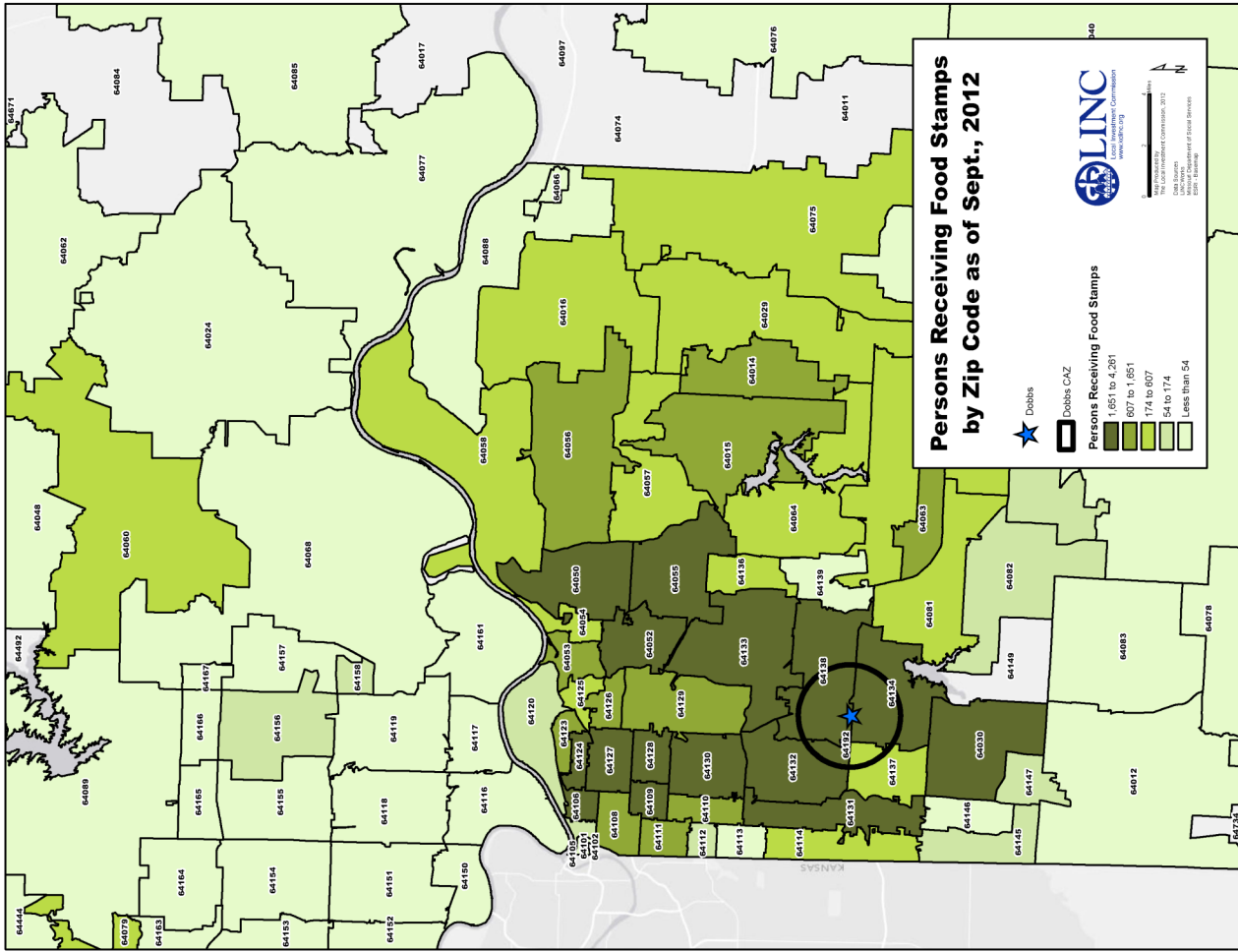
Source: Missouri Department of Health and Senior Services

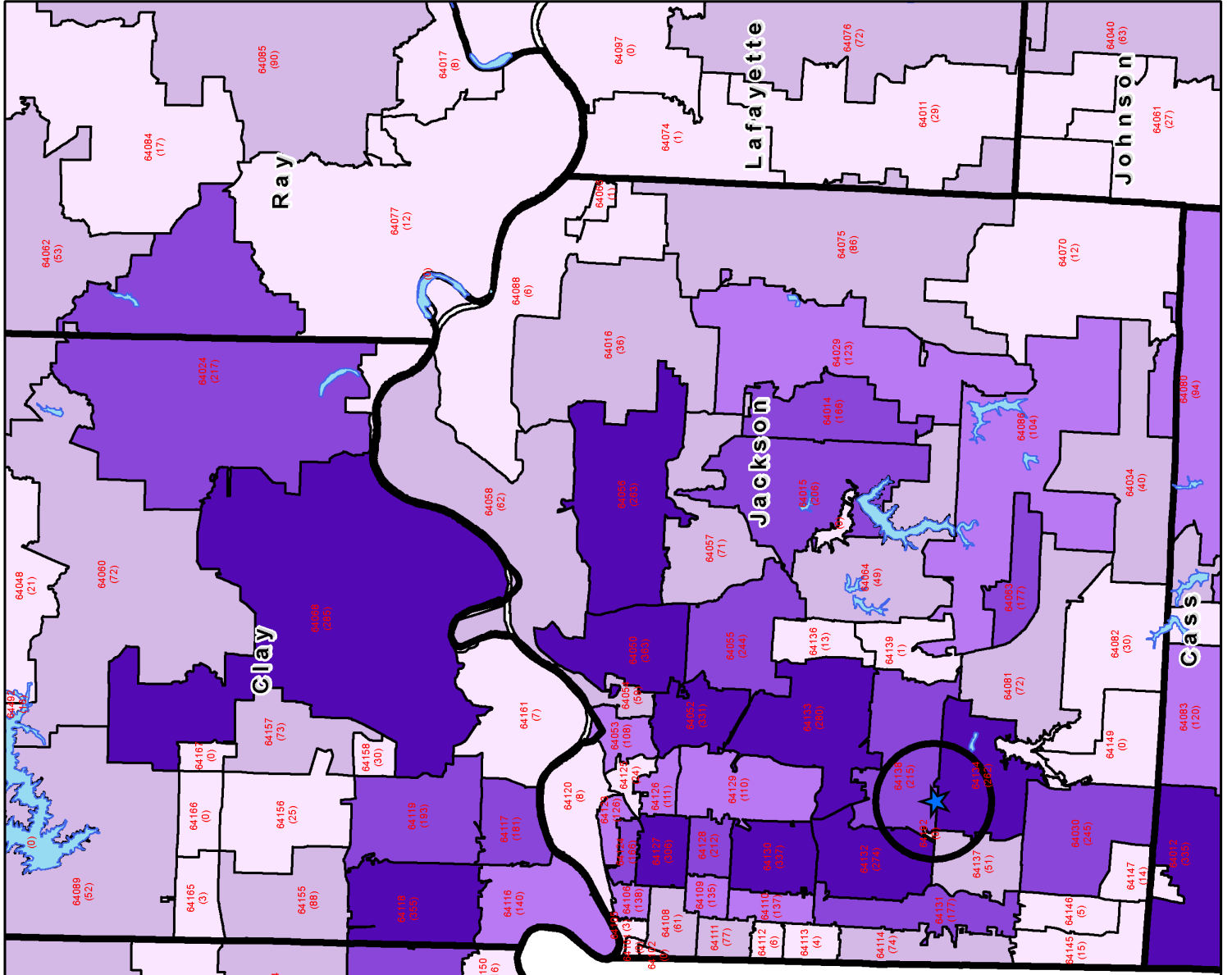
Community Resources

Churches

Arborknoll Assembly	9701 James A Reed Rd	Kansas City	MO
Arborknoll Gospel Assembly Church	9633 James A. Reed Rd.	Kansas City	MO
Bannister Road Baptist Church	7503 E Bannister Rd	Kansas City	MO
Besonia Baptist Church	9910 E Bannister Rd	Kansas City	MO
Blue Ridge Baptist Temple	10306 Blue Ridge Blvd	Kansas City	MO
Blue Ridge Bible Church	8524 Blue Ridge Blvd	Raytown	MO
Blue Ridge Church Of Christ	9603 Blue Ridge Blvd	Kansas City	MO
Bread Of Life East Church	7223 E. Bannister Rd.	Kansas City	MO
Broadview Christian Church	9101 Blue Ridge Blvd	Kansas City	MO
Canaan Worship Center	5333 E. Bannister Rd.	Kansas City	MO
Calvary Assembly Of God Church	9320 Elm Ave	Kansas City	MO
Christian Life Church	7005 E 102nd St	Kansas City	MO
Christian Tabernacle	7217 E 87th St	Kansas City	MO
Church Of God Seventh Day	9207 Old Santa Fe Rd	Kansas City	MO
Church Of The Nazarene	10508 Hillcrest Rd	Kansas City	MO
Community Church Of The Frsqr	9301 E 87th St	Raytown	MO
Community of Christ	9801 Blue Ridge Blvd.	Kansas City	MO
Concord Fortress Of Hope	7710 E 102nd St	Kansas City	MO
Covenant Reformed Church	9511 Lane Ave	Kansas City	MO
Crosspoint Community Church	10508 Hillcrest Rd.	Kansas City	MO
Faith Presbyterian Church	8301 James A Reed Rd	Raytown	MO
Genesis Missionary Bapt Church	7705 E 87th St	Raytown	MO
Greater Bethel Missionary Baptist	9201 Eastern Ave	Kansas City	MO
Greater Works CME Church	7424 E 107th St	Kansas City	MO
Jehovah's Witnesses	10000 James A. Reed Rd.	Kansas City	MO
Jehovah's Witnesses	8105 E. 92nd Ter.	Kansas City	MO
Journey Foursquare Church	9301 E. 87th St.	Raytown	MO
Lane Avenue Baptist Church	9003 E 87th St	Raytown	MO
Light of Light Christian	7223 E. Bannister Rd.	Kansas City	MO
Loma Vista Assembly Of God	9200 Blue Ridge Blvd	Kansas City	MO
Loma Vista Baptist Church	8622 Blue Ridge Blvd	Raytown	MO
Malachi Missionary Bapt Church	8511 Oldham Rd	Kansas City	MO
New Birth Baptist Church	9201 E Bannister Rd	Kansas City	MO
New Vision Christian Church	9101 Blue Ridge Blvd.	Kansas City	MO
Peace Lutheran Church	8240 Blue Ridge Blvd	Raytown	MO
Refreshing Water Worship Ctr	8218 E Bannister Rd	Kansas City	MO
Ruskin Heights Lutheran Church	10801 Ruskin Way	Kansas City	MO
South Kansas City Baptist Chr	10200 James A Reed Rd	Kansas City	MO
St John Francis Rigis Church	8941 James A Reed Rd	Kansas City	MO
St Luke's United Methodist Chr	9420 James A Reed Rd	Kansas City	MO
St Paul's Nazarene Church	8500 E 80th Ter	Kansas City	MO
St Peter's Full Gospel Baptist	7223 E Bannister Rd	Kansas City	MO
There Is Hope Fellowship Ctr	10801 Ruskin Way	Kansas City	MO
Victory Baptist Church	9601 Blue Ridge Blvd	Kansas City	MO

Source: Yellow Pages





Total CA/N Reports: Northwest Region

Report Counts:
 Total region count: **13,918**
 Max Count: **Jackson**
 Zip - **64050**
 363 Reports

Legend:
 Total Reports: More than 250, 150 to 250, 30 to 150, 30 to 90, Less than 30
 County Boundary: [thick black line]
 Rivers: [blue line]
 Lakes: [light blue area]
 Dobbs: [blue star]
 Dobbs CAZ: [black square]

THIS PAGE INTENTIONALLY LEFT BLANK.

Data Resources

City of Kansas City, Mo.

Jackson County, Mo.

Kansas City Free Health Clinic

Kansas City Parks and Recreation Department

Kansas City Public Schools

Mid-America Regional Council

Missouri Department of Elementary and Secondary Education

Missouri Department of Social Services

Missouri Department of Health and Human Services

United States Census Bureau

United States Department of Housing and Urban Development

United States Department of Labor

United Way of Greater Kansas City

University of Missouri-Kansas City Center for Economic Information

University of Michigan National Poverty Center

**Site Data Book developed By:
Local Investment Commission (LINC)
2013**

**All maps, photographs, and tables were developed and/or are property of LINC, unless otherwise noted,
and must be cited for external use.**

**For more information on LINC, please visit:
www.kclinc.org**