

Indian Trails

Caring Communities

Data Book



A review and analysis of the community surrounding the Caring Communities site located at Indian Trails Elementary School in Independence, Mo.



Introduction

About Caring Communities

Caring Communities was developed by the Local Investment Commission (LINC) to fulfill the role once played by the courthouse square: a place where the community gathers together, shares ideas, and holds neighborhood events. The growth of Caring Communities reflects increasing national interest in creating “community schools.”

The LINC Caring Communities effort, which began in 1992, has grown to 80 sites in seven school districts in Kansas City and Jackson County, MO. LINC’s school district partners include Kansas City, Independence, Fort Osage, North Kansas City, Hickman Mills, Grandview and Center. Other partners include charter schools, local government, state agencies, and community organizations.

About This Book

The Indian Trails Caring Communities Data Book is intended to provide useful information for decision-makers of the Indian Trails community — parents, neighbors, site council members, staff and the general public. We hope the facts, figures and resources contained in this book will help these decision-makers to better understand their neighborhoods and identify needs and opportunities for better coordination of services. We hope this book will help build on the success of Caring Communities and help it thrive in the future.

To request additional copies of this book, or to suggest improvements for future editions of this book, contact the Indian Trails Caring Communities Site Coordinator. The book is also available to download for free at www.kclinc.org/fortosage

Indian Trails Caring Communities
Established 2008

What is a Community School?

A community school is both a place and a set of partnerships between the school and other community stakeholders which leads to improved student learning, stronger families and healthier communities. Community schools are open to everyone—all day, including evenings and weekends. Community-based organizations or public institutions often work as lead agencies in community schools, helping to mobilize community assets and support students success.

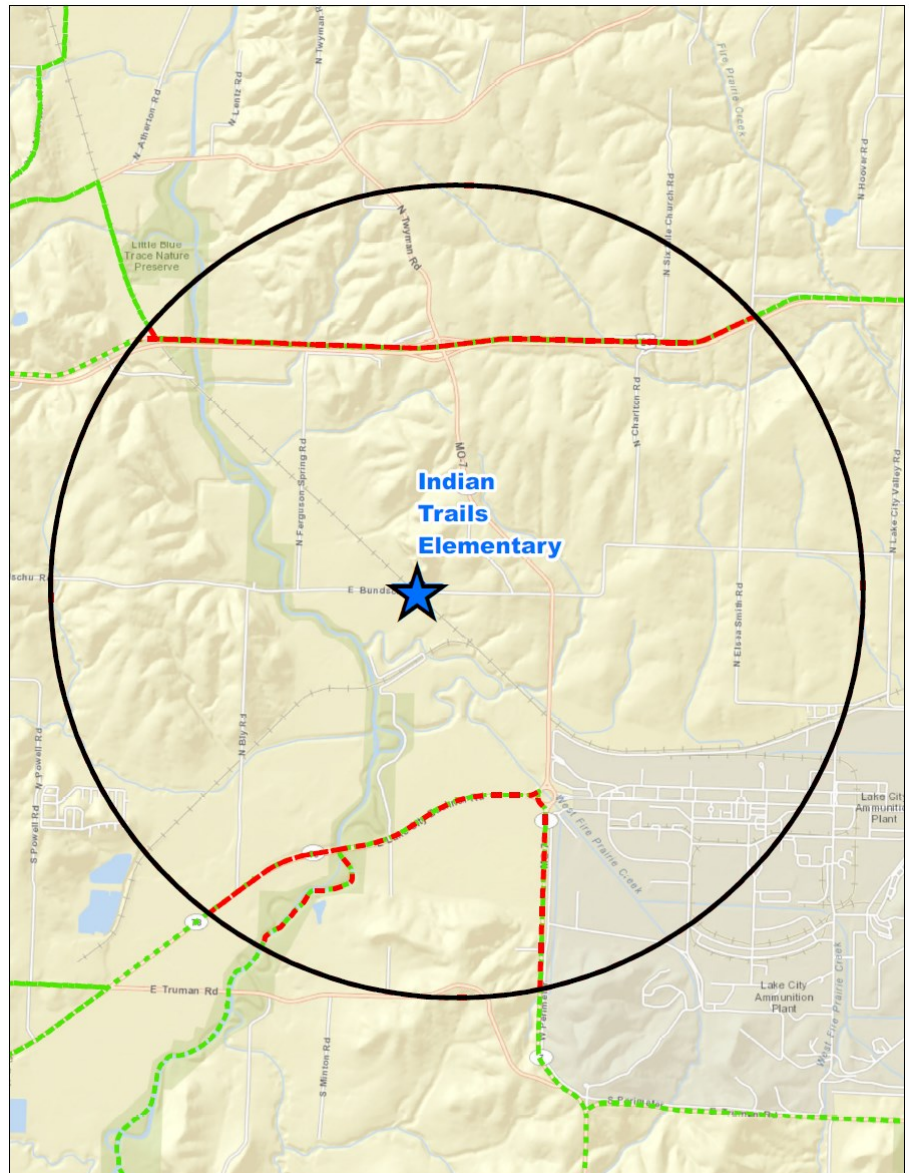
Coalition for Community Schools
www.communityschools.org

Community Analysis Zone (CAZ)

The Community Analysis Zone (CAZ) for the Indian Trails community was established using Indian Trails Elementary School as a reference point and includes the area within a two-mile radius of the school (the black circle in the map at right). The school catchment area is displayed by the white and blue striped area.

The CAZ delimits an area that overlaps, but is not identical to, the Indian Trails school boundaries. The CAZ allows for analysis of data about residents, neighborhoods and services that, while not necessarily located within the official school boundaries, nevertheless pertains directly to the community served by the Caring Communities site.

For the purpose of this book the boundaries of the Indian Trails CAZ and the “Indian Trails community” are the same, and the terms “CAZ” and “community” are used interchangeably.



Data for the site book was obtained from a number of resources including but not limited to the City of Independence, Mo.; U.S. Census Bureau; Jackson County, Mo.; Missouri Department of Elementary and Secondary Education; Missouri Department of Health and Senior Services; United Way of Greater Kansas City; Missouri Department of Social Services; University of Missouri-Kansas City Center for Economic Information; and University of Michigan National Poverty Center.

Community data was analyzed by census tract (red boundaries) within the CAZ. Census tracts are small, relatively permanent statistical subdivisions of a county delineated by local participants as part of the U.S. Census Bureau's Participant Statistical Areas Program. The U.S. Census Bureau delineated census tracts in situations where no local participant existed or where local or tribal governments declined to participate. Census tracts generally have between 1,500 and 8,000 people, with an optimum size of 4,000 people. (Source: U.S. Census Bureau.)

Education

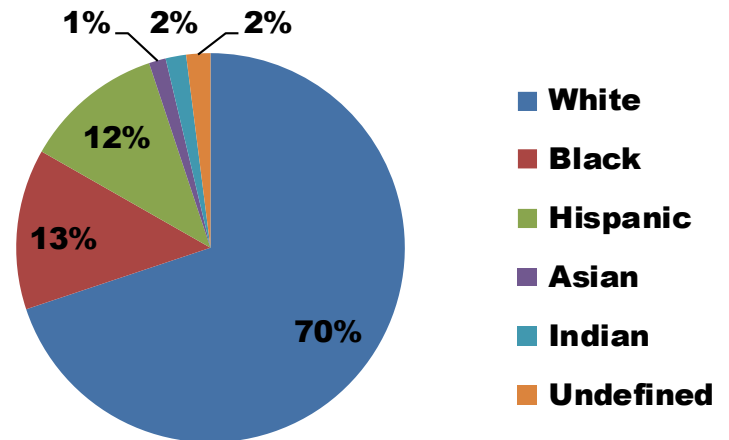
Indian Trails Elementary

Total 2012 Enrollment: 345

24300 Bundschu Rd., Independence, MO 64058

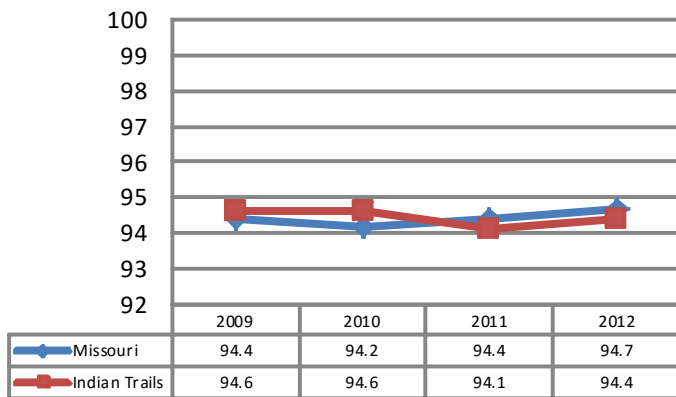
(816) 650-7645

2012 Student Demographics



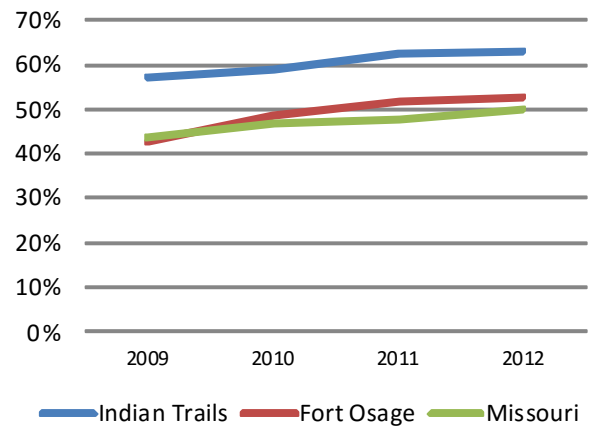
Source: Missouri Department of Elementary and Secondary Education

2012 Student Attendance Rate



Source: Missouri Department of Elementary and Secondary Education

Free/Reduced Lunch

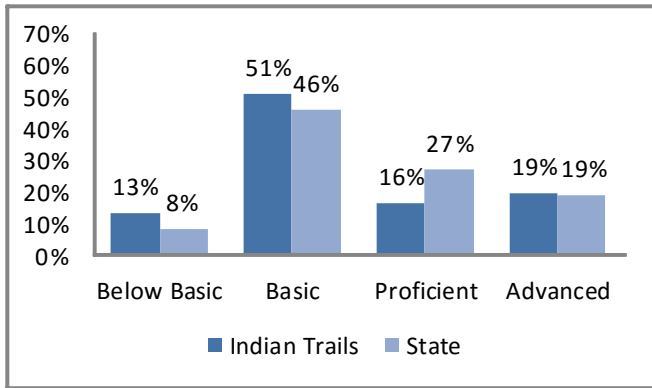


Source: Missouri Department of Secondary and Elementary Education

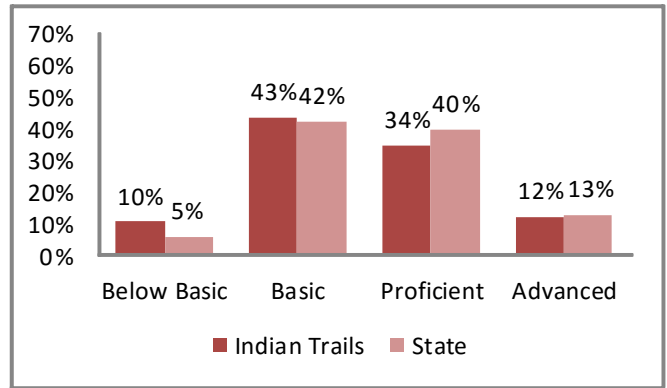
Education

2012 Missouri Assessment Program (MAP)

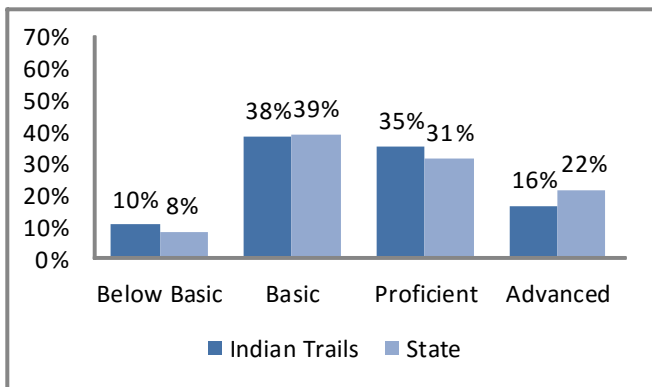
3rd Grade Communication Arts



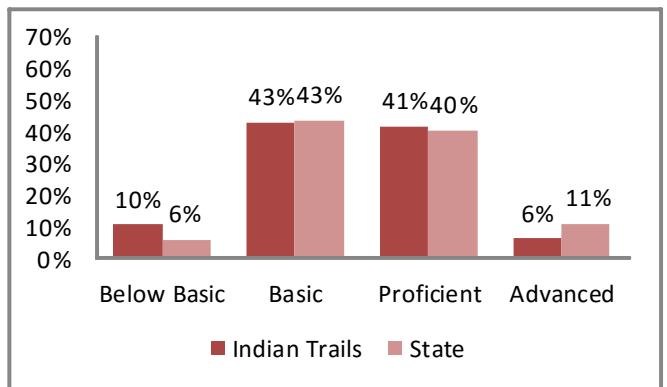
3rd Grade Mathematics



4th Grade Communication Arts



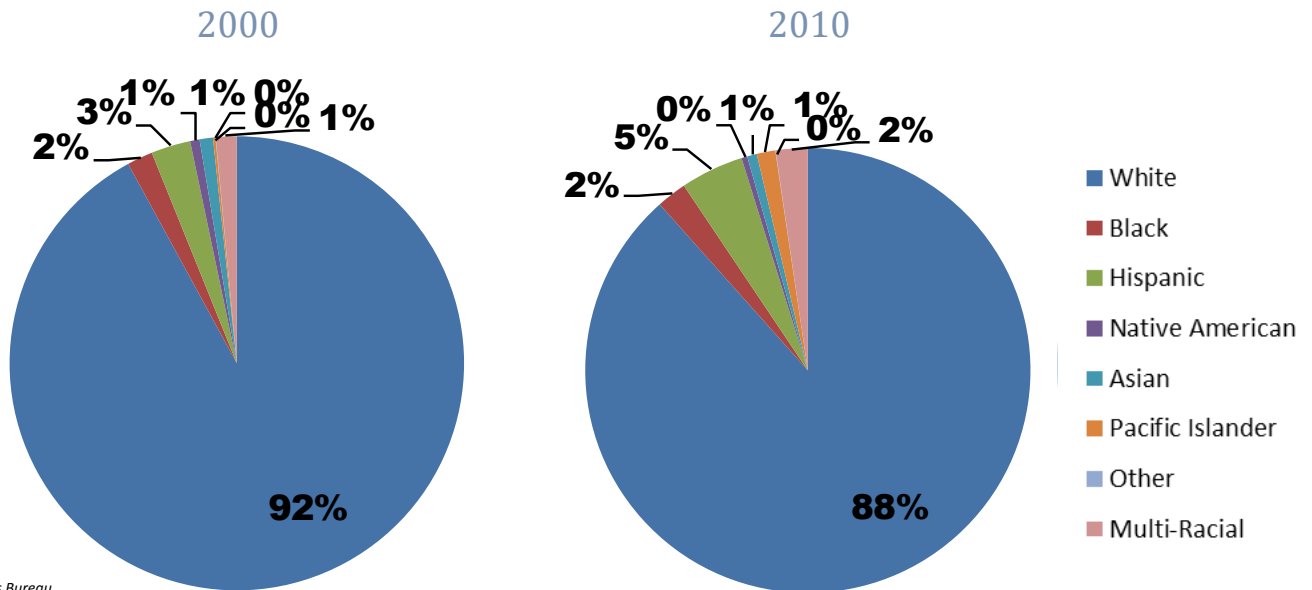
4th Grade Mathematics



Source: Missouri Department of Elementary and Secondary Education

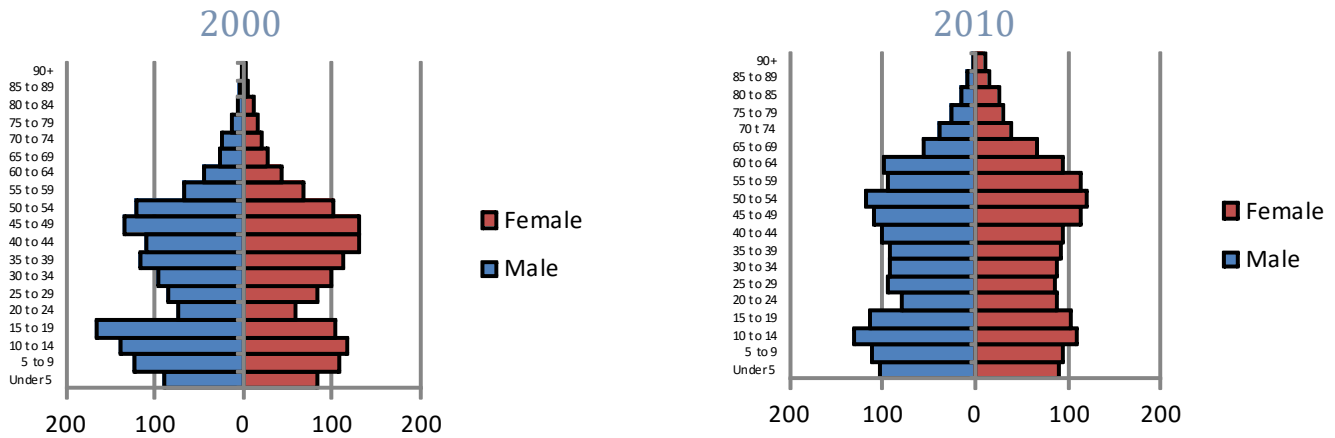
Demographics

Race



Source: U.S. Census Bureau

Age by Sex



Source: U.S. Census Bureau

Family Type with Related Children

	2000	2010	% Change
Total Population	2,770	2,955	7%
Total Families	771	826	7%
Married Families	666	639	-4%
With Children Under Age 18	361	271	-25%
Single Male Households	33	58	76%
With Children Under Age 18	23	39	70%
Single Female Households	72	128	78%
With Children Under Age 18	50	86	72%

Source: U.S. Census Bureau

Economy

	Indian Trails	Jackson County
Median Income	\$75,208	\$46,252
Unemployment Rate	4.7%	8.8%

Source: U.S. Census

Poverty

	Indian Trails	Jackson County
2000	2.0%	11.9%
2010	12.2%	15.7%

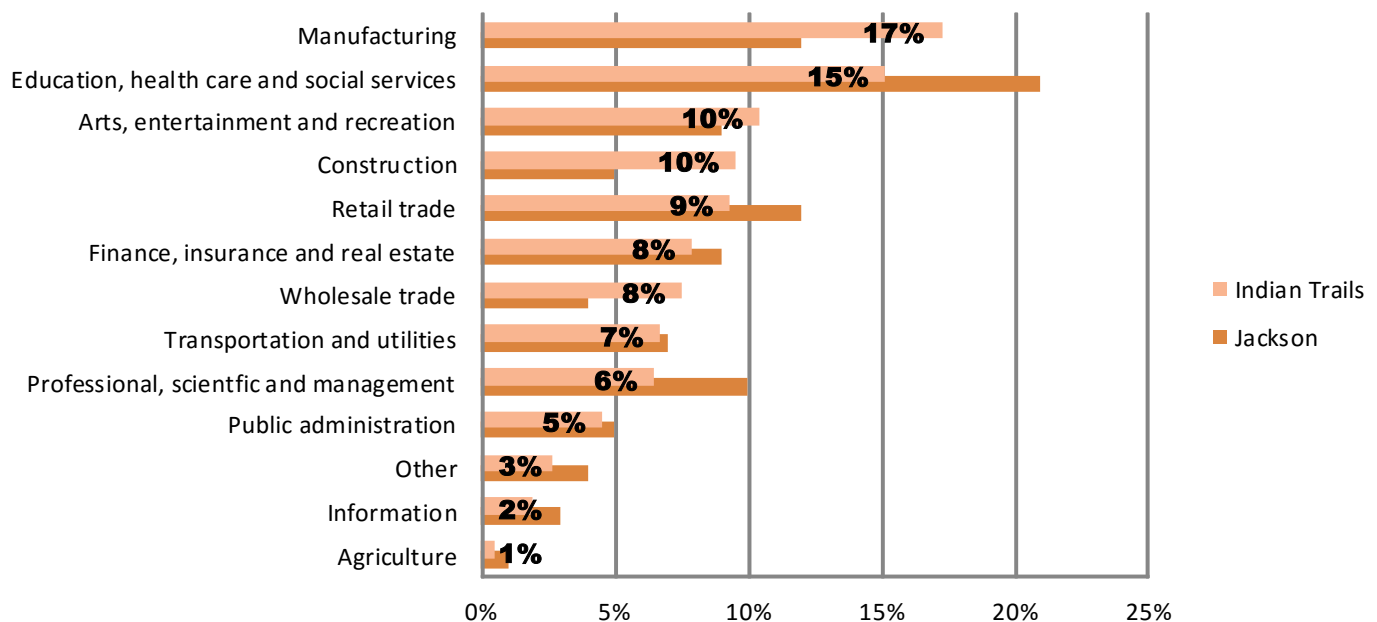
U.S. Census Bureau, 2010 ACS 5 Year Estimates

2010 Poverty Thresholds, Selected Family Types		
Single Individual	Under 65	\$ 11,344
	65 years and Older	\$ 10,458
Single Parent	One Child	\$ 15,030
	Two Children	\$ 17,568
	No Children	\$ 14,602
Two Adults	One Child	\$ 17,552
	Two Children	\$ 22,113
	Three Children	\$ 26,023

Note: The United States determines the official poverty rate using poverty thresholds that are issued each year by the Census Bureau. The thresholds represent the annual amount of cash income minimally required to support families of various sizes. A family is counted as poor if its pretax money income is below its poverty threshold. Money income does not include noncash benefits such as public housing, Medicaid, employer-provided health insurance and food stamps.

Source: National Poverty Center

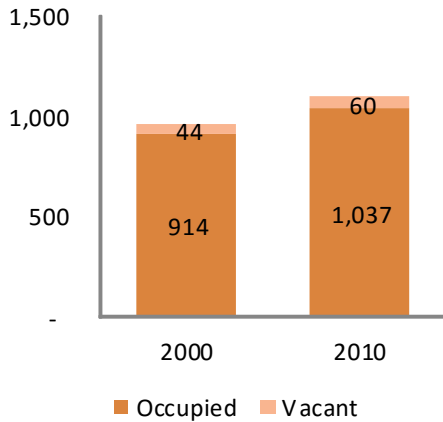
Employment by Industry



U.S. Census Bureau, 2010 ACS 5 Year Estimates

Housing

Vacant Houses



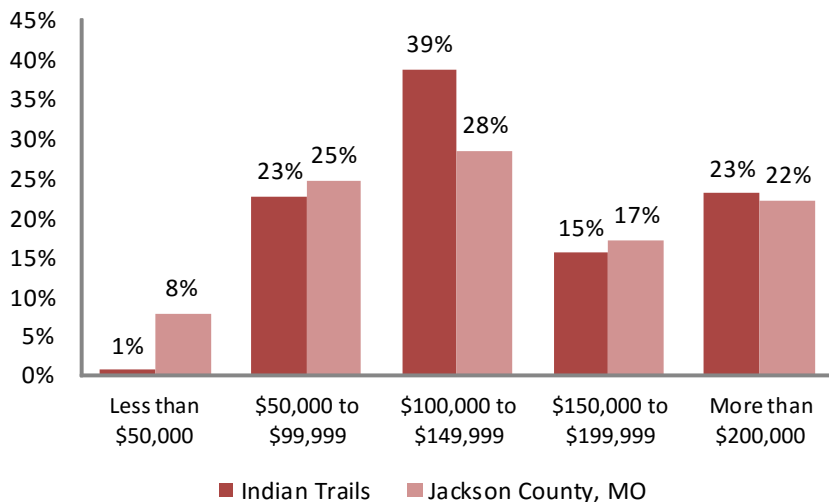
Source: U.S. Census, 2000, 2010

Vacancy Rate

	2000	2010
Indian Trails	4.6%	5.5%
Jackson County	7.6%	12.0%

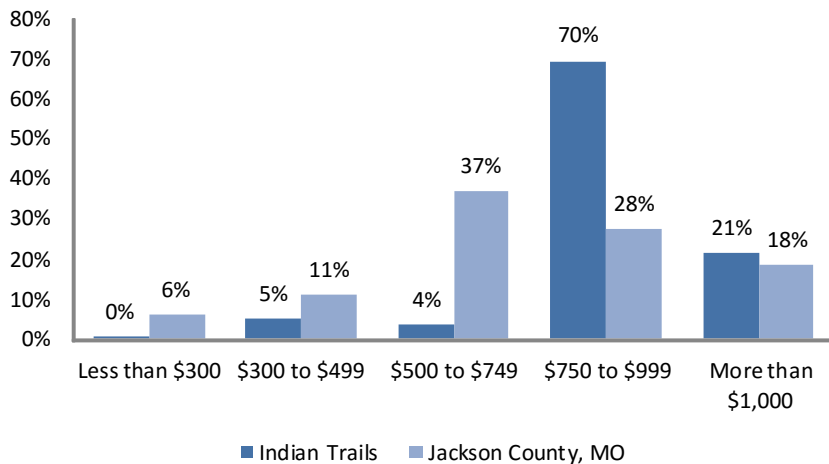
Source: U.S. Census, 2000, 2010

Home Values



Source: U.S. Census, 2010 ACS 5 Year Estimates

Gross Rent



Source: U.S. Census, 2010 ACS 5 Year Estimates

Housing Characteristics	2000 to 2010 Change
Housing Units	15%
Tenure	
Owner	4%
Renter	116%
Units Moved into Previous Five Years	-35%
Age of Housing Stock	2010 Percent
Less than 5 Years	3%
Less than 10 Years	16%
Less than 20 Years	30%
Less than 30 Years	40%
Less than 40 Years	71%
More than 50 Years	29%

Source: U.S. Census, 2010 ACS 5 Year Estimates

Community Resources

Parks

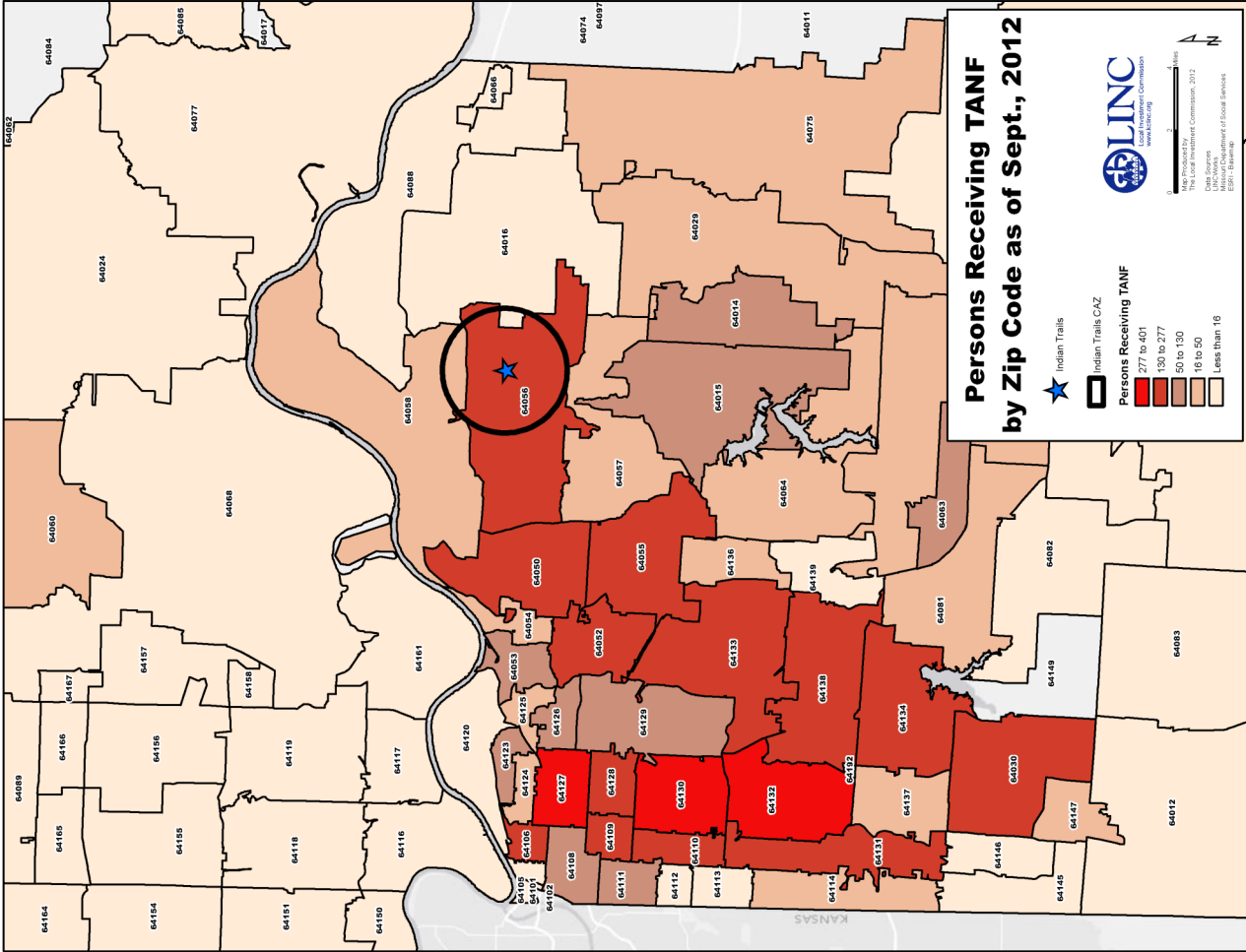
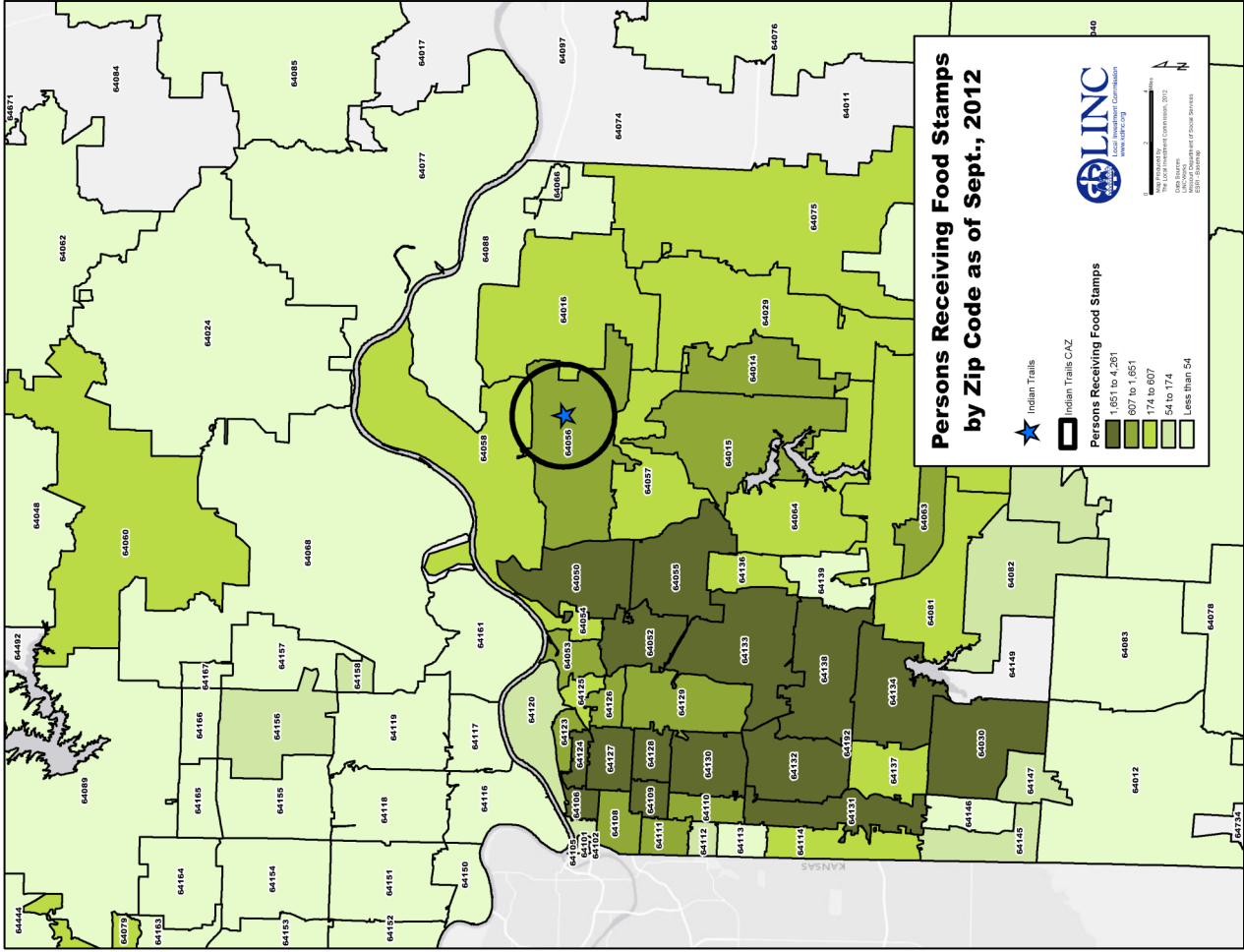
		Acres
Little Blue Trace Park	Multiple Entrances	1,856

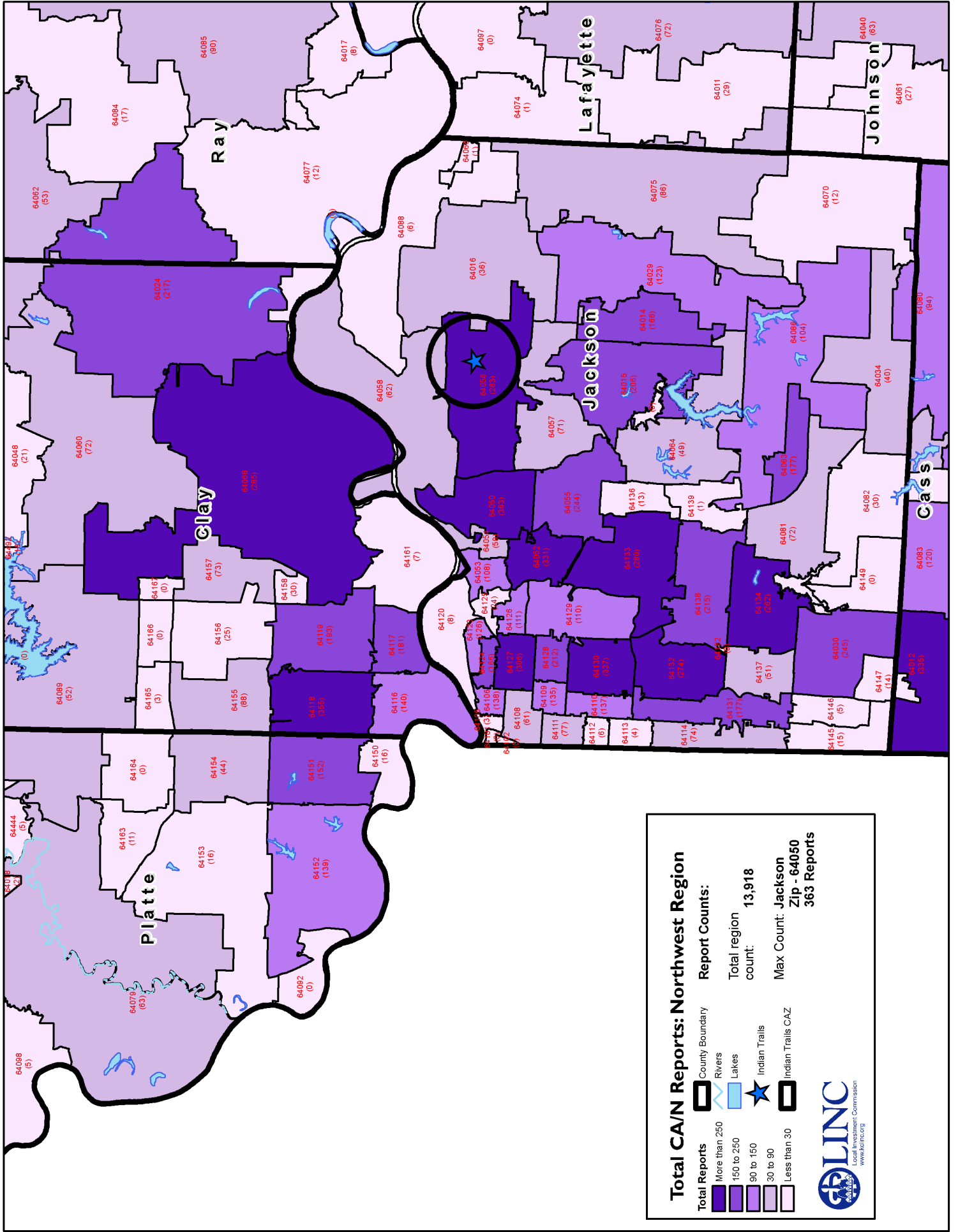
Source: Jackson County Dept. of Parks and Recreation

Churches

Anchor Point Baptist Church	25501 E Bundschu Rd	Independence	MO
Praise Tabernacle Church-God	900 N Bly Rd	Independence	MO

Source: Yellowpages





Total C/N Reports: Northwest Region

Total Reports	County Boundary	Rivers	Lakes	Indian Trails	Indian Trails CAZ	Report Counts:
More than 250						Total region count: 13,918
150 to 250						Max Count: Jackson
90 to 150						Zip - 64050
30 to 90						363 Reports
Less than 30						

LINC
Local Investment Commission
www.linc.org

THIS PAGE INTENTIONALLY LEFT BLANK.

THIS PAGE INTENTIONALLY LEFT BLANK.

Data Resources

City of Independence, Mo.

Jackson County, Mo.

Independence, Mo. Department of Parks and Recreation

Kansas City Free Health Clinic

Mid-America Regional Council

Missouri Department of Elementary and Secondary Education

Missouri Department of Social Services

Missouri Department of Health and Human Services

Independence Public School District

United States Census Bureau

United States Department of Housing and Urban Development

United States Department of Labor

United Way of Greater Kansas City

University of Missouri-Kansas City Center for Economic Information

University of Michigan National Poverty Center

**Site Book developed By:
Local Investment Commission (LINC)
2013**

**All maps, photographs, and tables were developed and/or are property of LINC, unless otherwise noted,
and must be cited for external use.**

**For more information on LINC, please visit:
www.kclinc.org**