

2010 Demographic Data by School District

Income, race and ethnicity of school-aged children



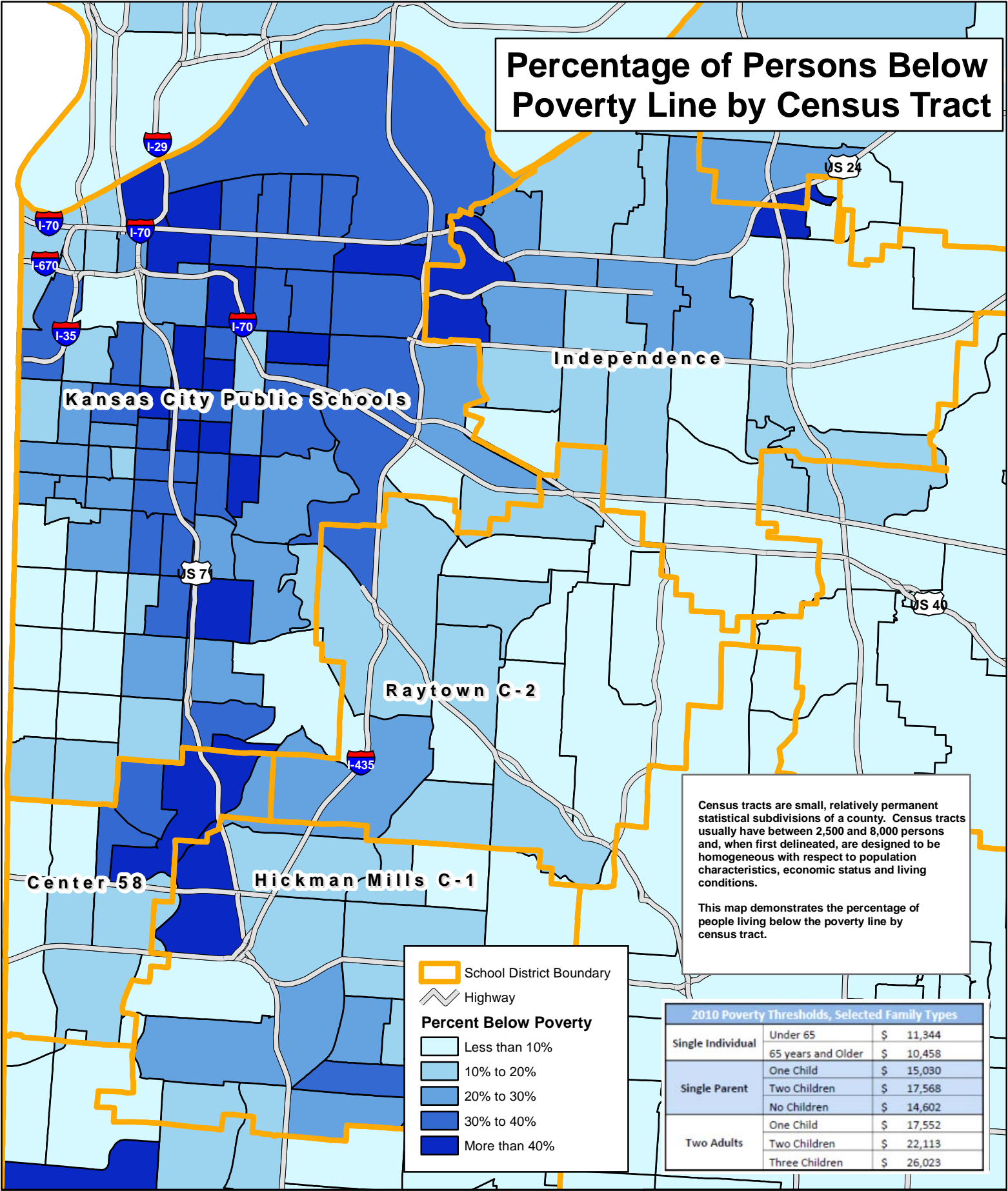
Local Investment Commission
3100 Broadway, Suite 1100
Kansas City, MO 64111
(816) 889-5050
info@kclinc.org



LINC

Local Investment Commission
www.kclinc.org

Percentage of Persons Below Poverty Line by Census Tract



Census tracts are small, relatively permanent statistical subdivisions of a county. Census tracts usually have between 2,500 and 8,000 persons and, when first delineated, are designed to be homogeneous with respect to population characteristics, economic status and living conditions.

This map demonstrates the percentage of people living below the poverty line by census tract.

Legend

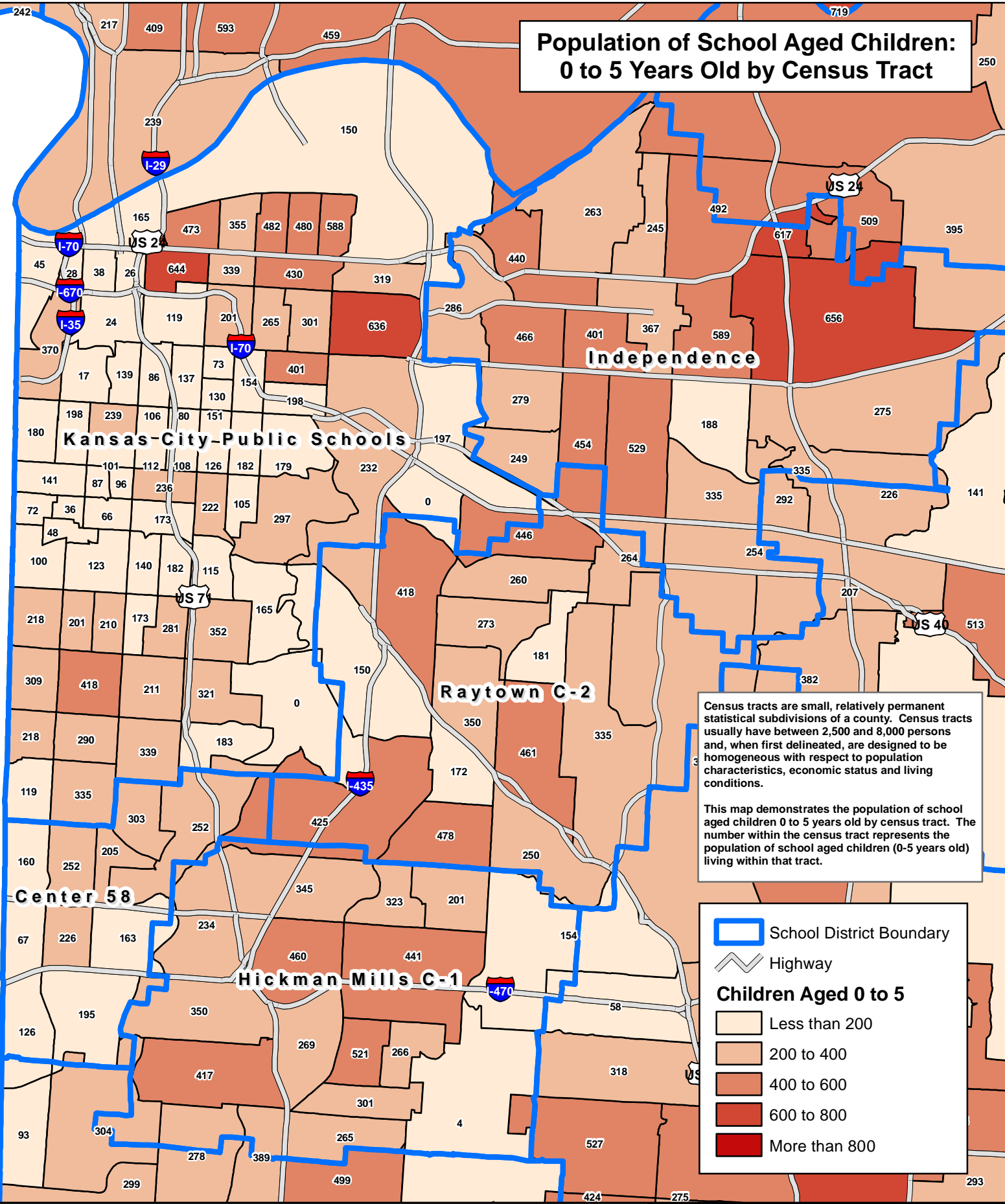
- School District Boundary
- Highway

Percent Below Poverty

- Less than 10%
- 10% to 20%
- 20% to 30%
- 30% to 40%
- More than 40%

2010 Poverty Thresholds, Selected Family Types		
Single Individual	Under 65	\$ 11,344
	65 years and Older	\$ 10,458
Single Parent	One Child	\$ 15,030
	Two Children	\$ 17,568
	No Children	\$ 14,602
Two Adults	One Child	\$ 17,552
	Two Children	\$ 22,113
	Three Children	\$ 26,023

Population of School Aged Children: 0 to 5 Years Old by Census Tract



Census tracts are small, relatively permanent statistical subdivisions of a county. Census tracts usually have between 2,500 and 8,000 persons and, when first delineated, are designed to be homogeneous with respect to population characteristics, economic status and living conditions.

This map demonstrates the population of school aged children 0 to 5 years old by census tract. The number within the census tract represents the population of school aged children (0-5 years old) living within that tract.

School District Boundary (Blue outline)

Highway (Grey line)

Children Aged 0 to 5

- Less than 200 (Lightest tan)
- 200 to 400 (Light tan)
- 400 to 600 (Medium tan)
- 600 to 800 (Dark tan)
- More than 800 (Darkest brown)

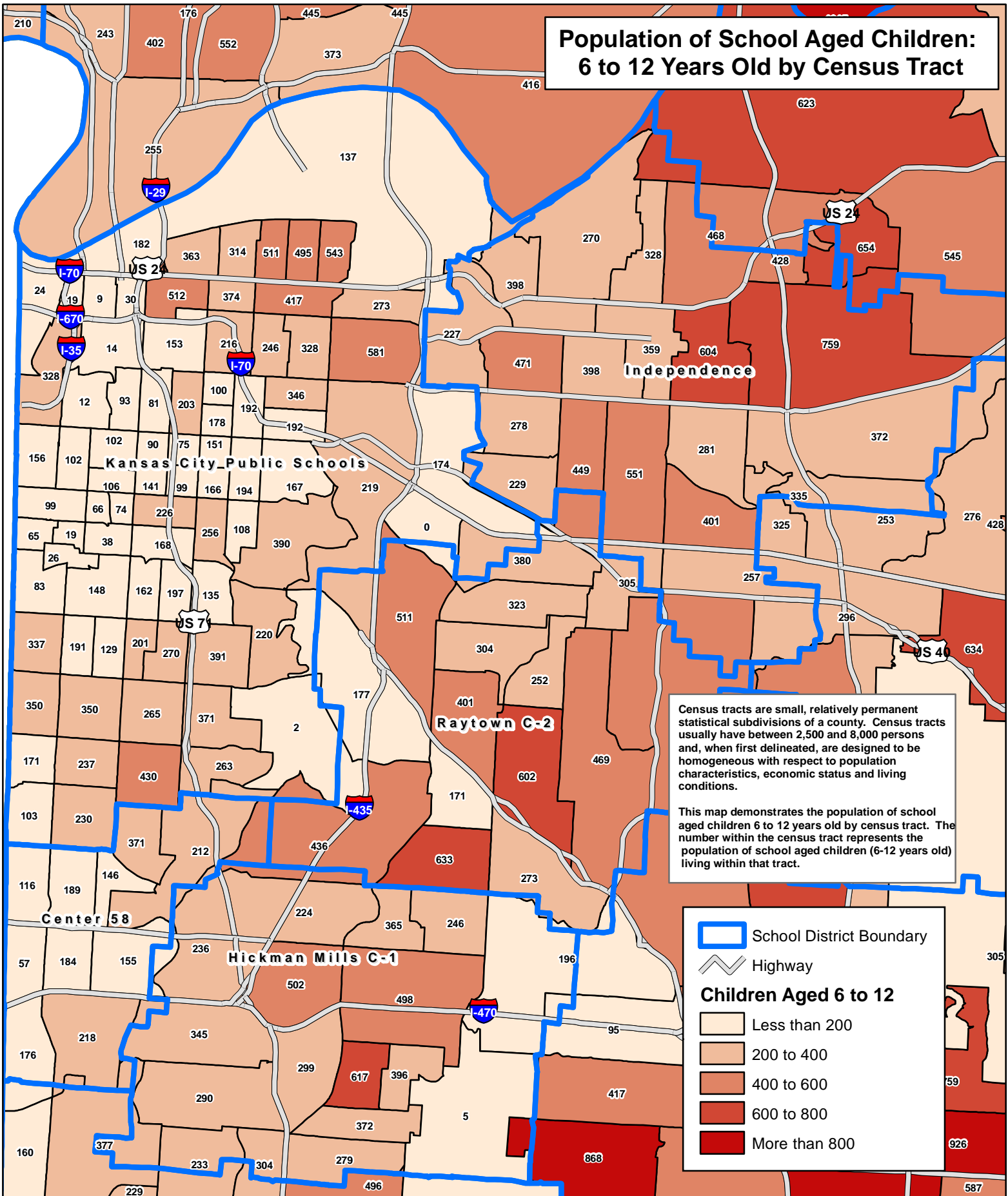


0 0.5 1 2 3 Miles

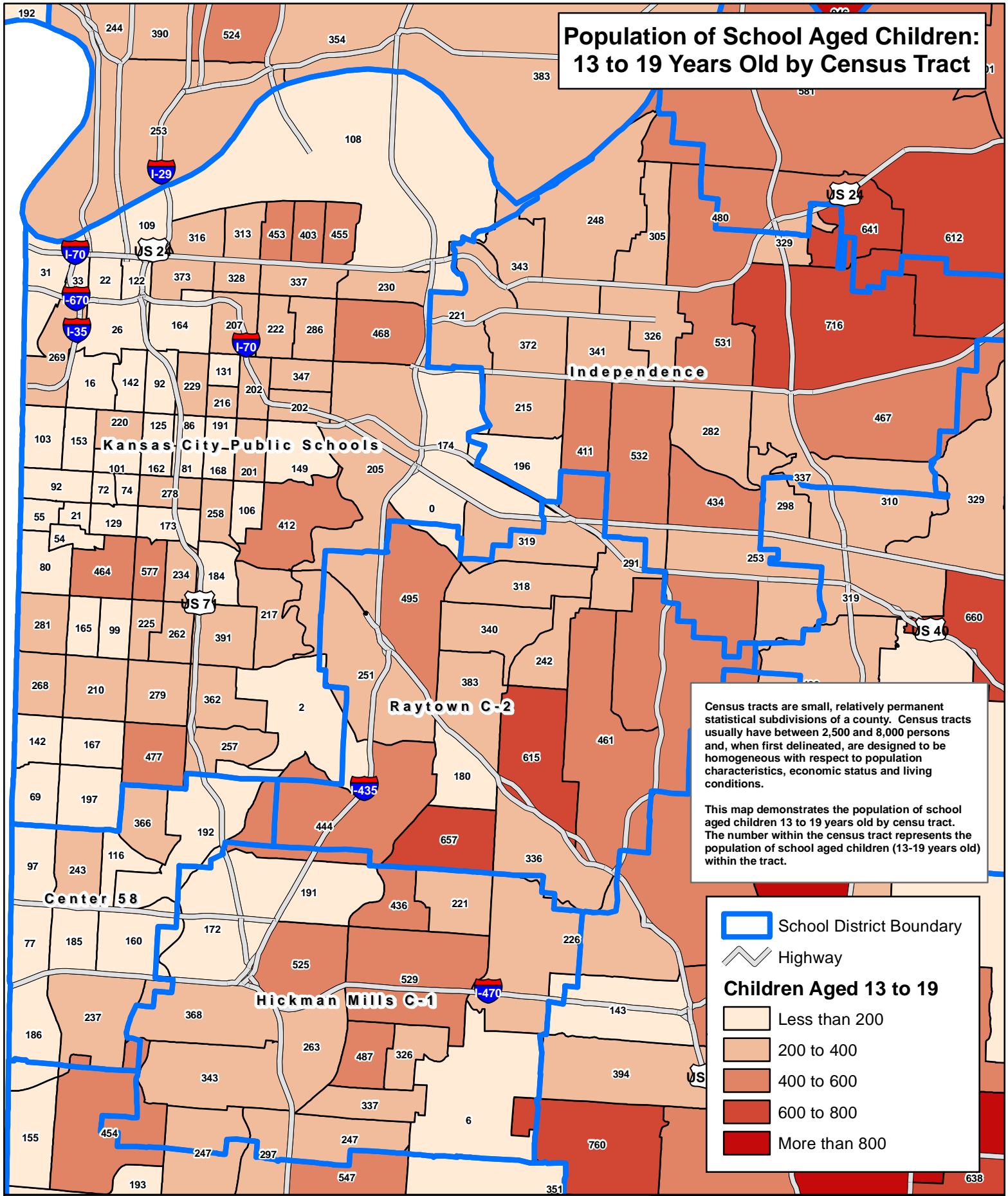
North arrow pointing up

Data Source: Census 2010
Map Created by The Local Investment Commission

Population of School Aged Children: 6 to 12 Years Old by Census Tract



Population of School Aged Children: 13 to 19 Years Old by Census Tract



Census tracts are small, relatively permanent statistical subdivisions of a county. Census tracts usually have between 2,500 and 8,000 persons and, when first delineated, are designed to be homogeneous with respect to population characteristics, economic status and living conditions.

This map demonstrates the population of school aged children 13 to 19 years old by census tract. The number within the census tract represents the population of school aged children (13-19 years old) within the tract.

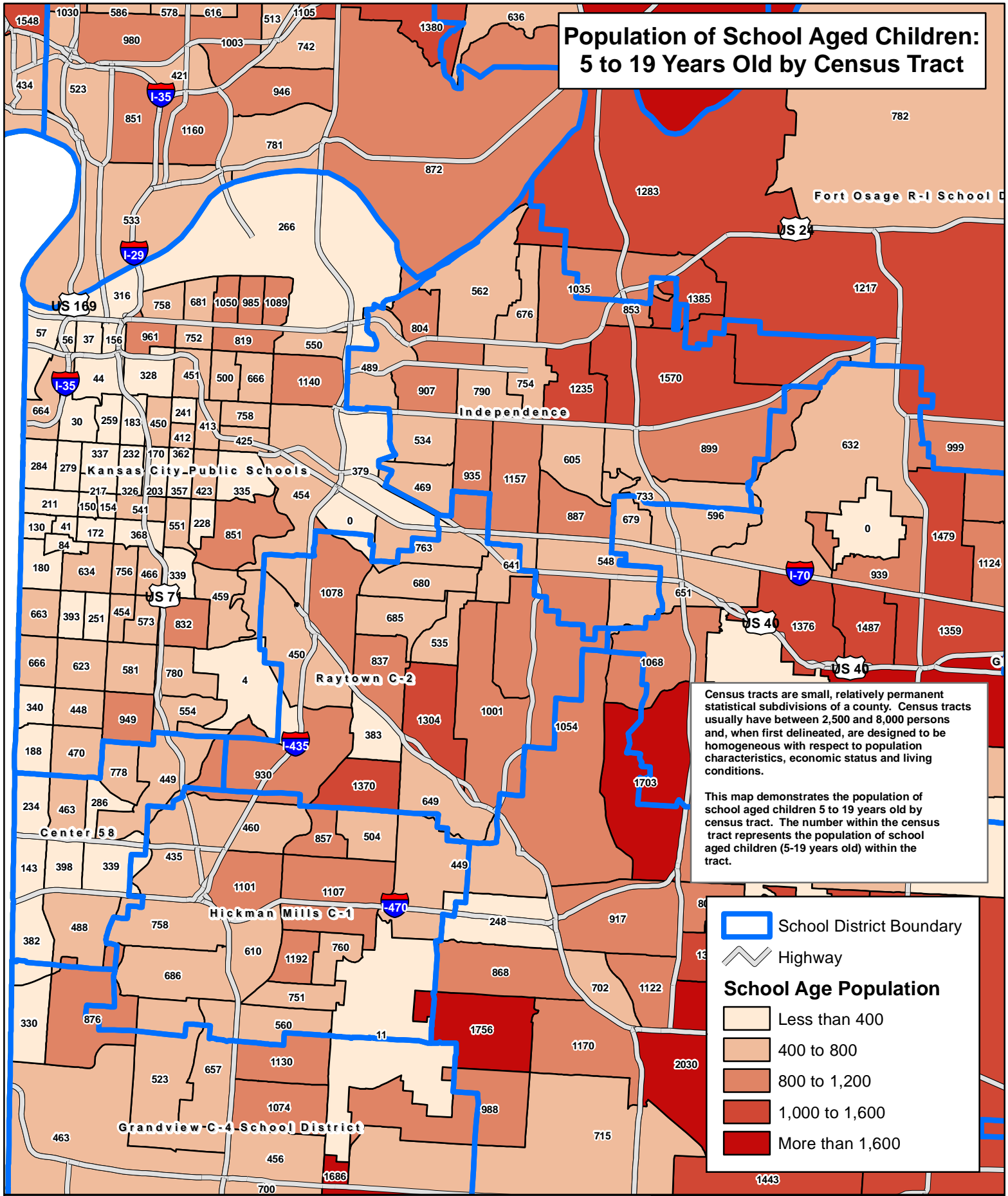
School District Boundary

Highway

Children Aged 13 to 19

- Less than 200
- 200 to 400
- 400 to 600
- 600 to 800
- More than 800

Population of School Aged Children: 5 to 19 Years Old by Census Tract



Census tracts are small, relatively permanent statistical subdivisions of a county. Census tracts usually have between 2,500 and 8,000 persons and, when first delineated, are designed to be homogeneous with respect to population characteristics, economic status and living conditions.

This map demonstrates the population of school aged children 5 to 19 years old by census tract. The number within the census tract represents the population of school aged children (5-19 years old) within the tract.

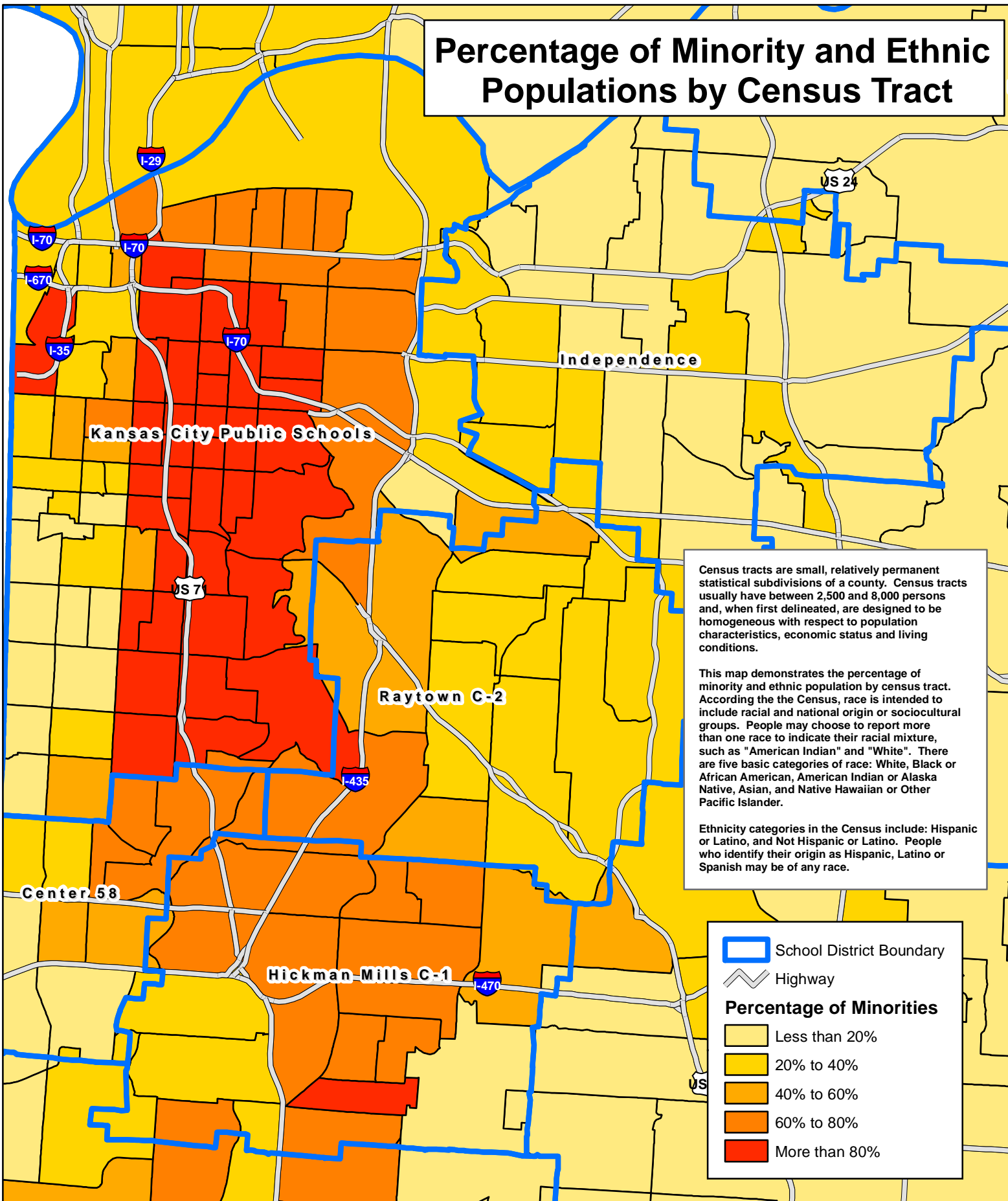
School District Boundary

Highway

School Age Population

- Less than 400
- 400 to 800
- 800 to 1,200
- 1,000 to 1,600
- More than 1,600

Percentage of Minority and Ethnic Populations by Census Tract



Census tracts are small, relatively permanent statistical subdivisions of a county. Census tracts usually have between 2,500 and 8,000 persons and, when first delineated, are designed to be homogeneous with respect to population characteristics, economic status and living conditions.

This map demonstrates the percentage of minority and ethnic population by census tract. According to the Census, race is intended to include racial and national origin or sociocultural groups. People may choose to report more than one race to indicate their racial mixture, such as "American Indian" and "White". There are five basic categories of race: White, Black or African American, American Indian or Alaska Native, Asian, and Native Hawaiian or Other Pacific Islander.

Ethnicity categories in the Census include: Hispanic or Latino, and Not Hispanic or Latino. People who identify their origin as Hispanic, Latino or Spanish may be of any race.

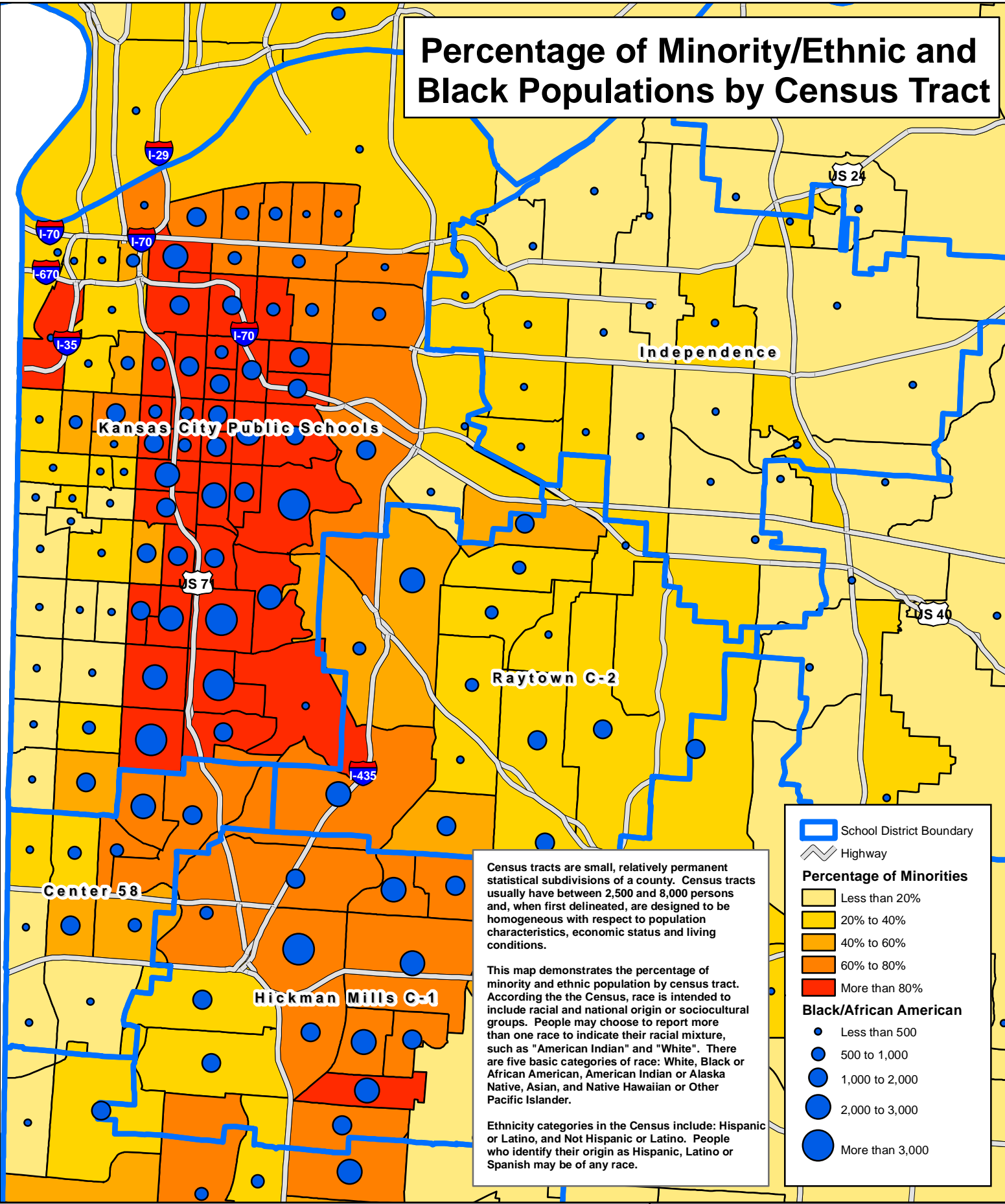
School District Boundary

Highway

Percentage of Minorities

- Less than 20%
- 20% to 40%
- 40% to 60%
- 60% to 80%
- More than 80%

Percentage of Minority/Ethnic and Black Populations by Census Tract



Census tracts are small, relatively permanent statistical subdivisions of a county. Census tracts usually have between 2,500 and 8,000 persons and, when first delineated, are designed to be homogeneous with respect to population characteristics, economic status and living conditions.

This map demonstrates the percentage of minority and ethnic population by census tract. According to the Census, race is intended to include racial and national origin or sociocultural groups. People may choose to report more than one race to indicate their racial mixture, such as "American Indian" and "White". There are five basic categories of race: White, Black or African American, American Indian or Alaska Native, Asian, and Native Hawaiian or Other Pacific Islander.

Ethnicity categories in the Census include: Hispanic or Latino, and Not Hispanic or Latino. People who identify their origin as Hispanic, Latino or Spanish may be of any race.

Legend

- School District Boundary
- Highway

Percentage of Minorities

- Less than 20%
- 20% to 40%
- 40% to 60%
- 60% to 80%
- More than 80%

Black/African American

- Less than 500
- 500 to 1,000
- 1,000 to 2,000
- 2,000 to 3,000
- More than 3,000

Percentage of Minority/Ethnic and Hispanic Populations by Census Tract

