

Name: \_\_\_\_\_

Site: \_\_\_\_\_ Date: \_\_\_\_\_



**Objectives:**

This session will introduce the basics of LINC Chess. Workshop participants will have a better understanding of:

- The benefits of playing chess
- How the chess board is set up and how the pieces move and capture
- Develop the ability to encourage students, staff and parents to participate in chess and learn tips on how to support the chess instructor.



# Welcome to LINC Chess!

LINC believes that chess is a great way for children to learn and think strategically.

LINC Chess programs use chess to enhance students' self-confidence, thinking skills, and academic achievement while encouraging sportsmanship and good character.

This class is designed to introduce you to chess — the board, the pieces, and how to position all the pieces on the board at the beginning of a “Full” game. With this knowledge, you will be able to assist the chess instructors and students during their chess program.



**The benefits of LINC Chess:**

Chess has proven benefits to positive youth development, which include how to think logically and efficiently, how to make difficult and abstract decisions and dealing with consequences.

In this section, write what you think are the *benefits of playing chess*:

---

---

---

---

---

---

---

---

---

---

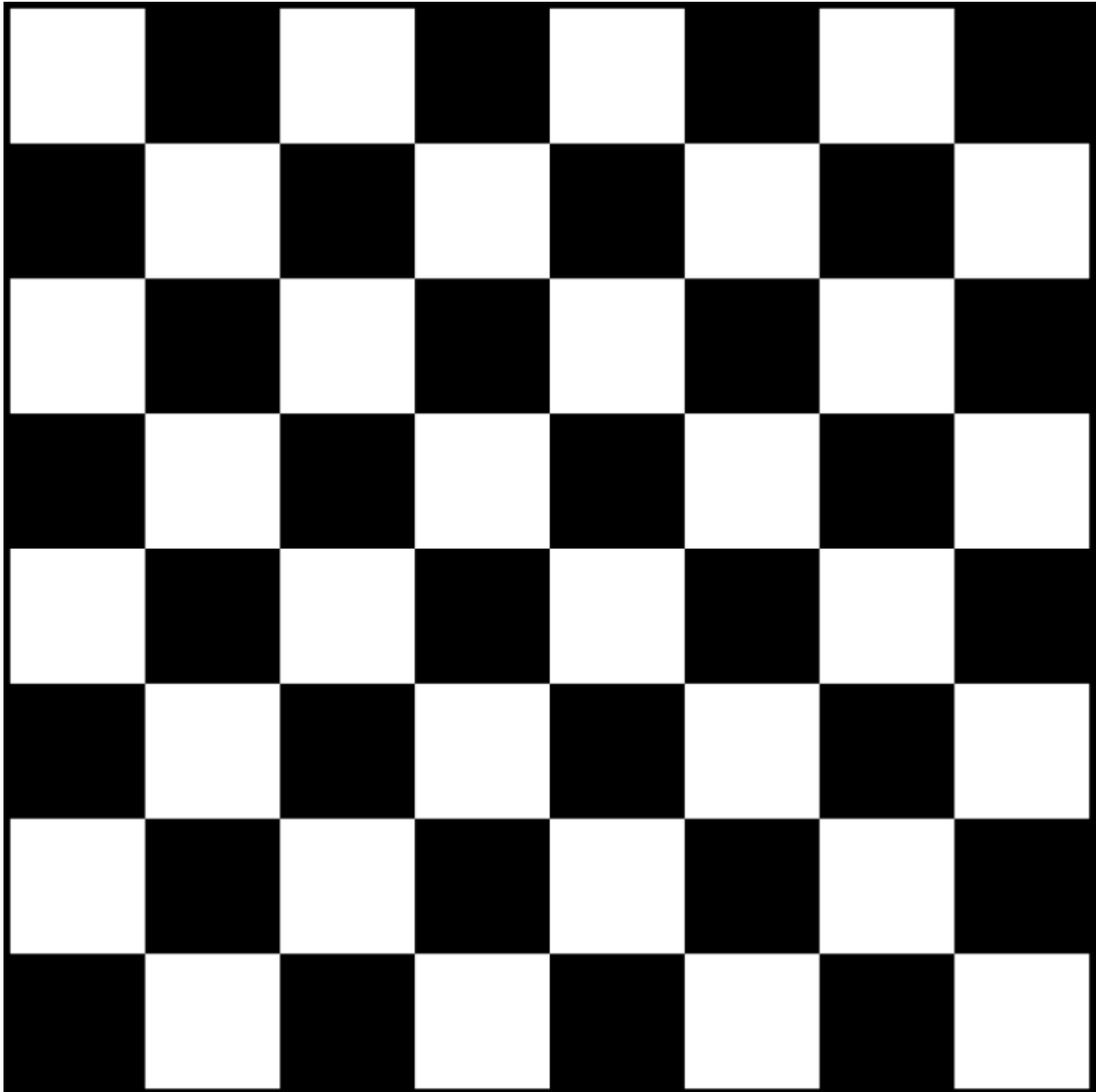
## The benefits of LINC Chess:



- I. Playing chess at a young age can help develop advanced math and critical thinking skills*
- II. Chess can “expand” your brain – it strengthens brain muscle memory.*
- III. Chess uses both sides of the brain. (Is it an art, skill, game or all of the above?)*
- IV. Chess teaches you to think in patterns. Pattern recognition is one of the most important mechanisms of chess improvement.*
- V. Playing Chess teaches you how to process many moves in advance.*
- VI. Chess players are better problem solvers.*
- VII. Research shows that playing chess at an early age can help to slow or sometimes prevent Alzheimer’s disease.*

## **The Chess Board:**

*Each chess board is made up of 64 squares – 32 light and 32 dark. A light square should always be in the bottom right-hand corner. (Light is on the right)*

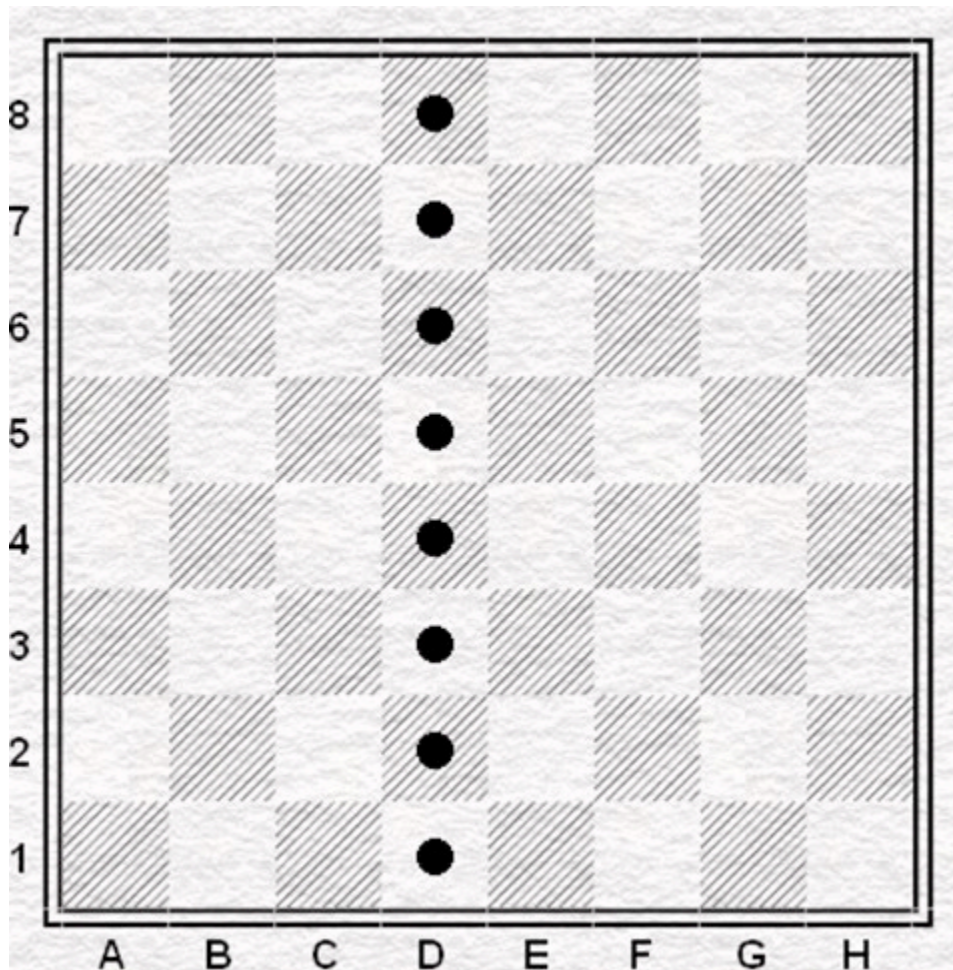


[This Photo](#) by Unknown Author is licensed under [CC BY-SA](#)

## The Chess Board:

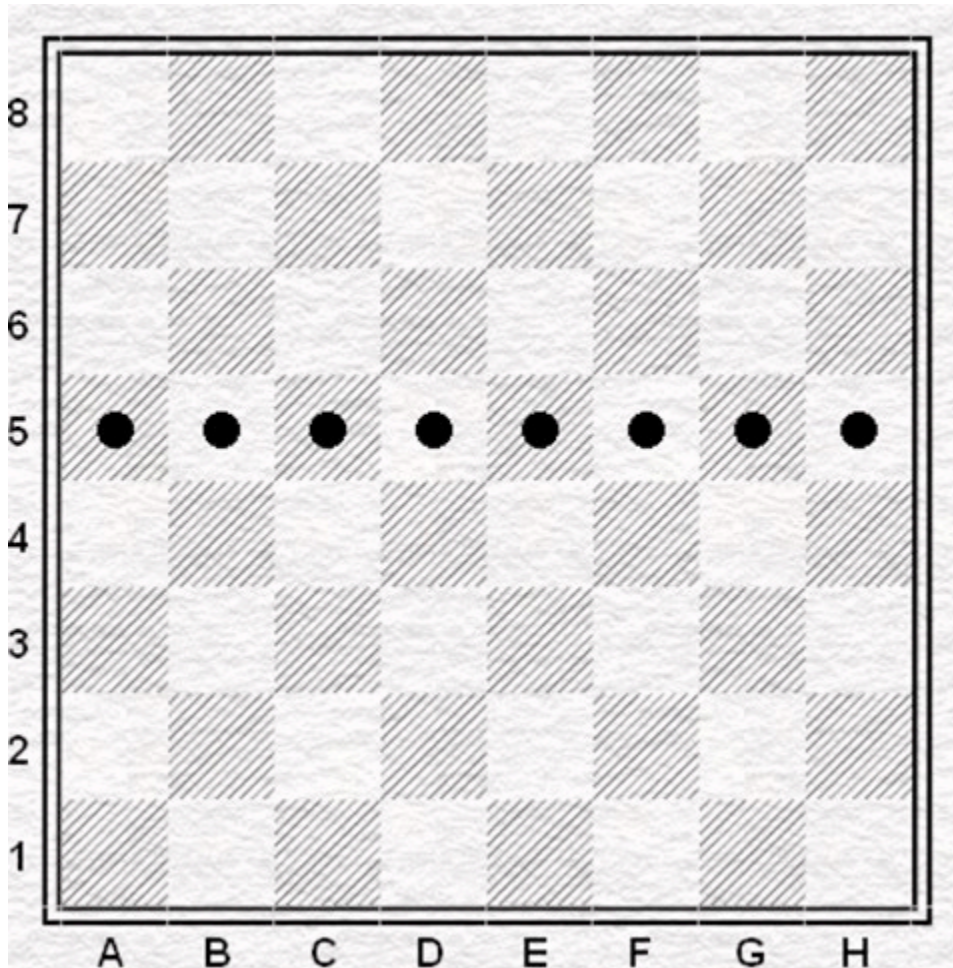
There are three important groups of squares:

### **Files—They go up and down the board (a-h)**



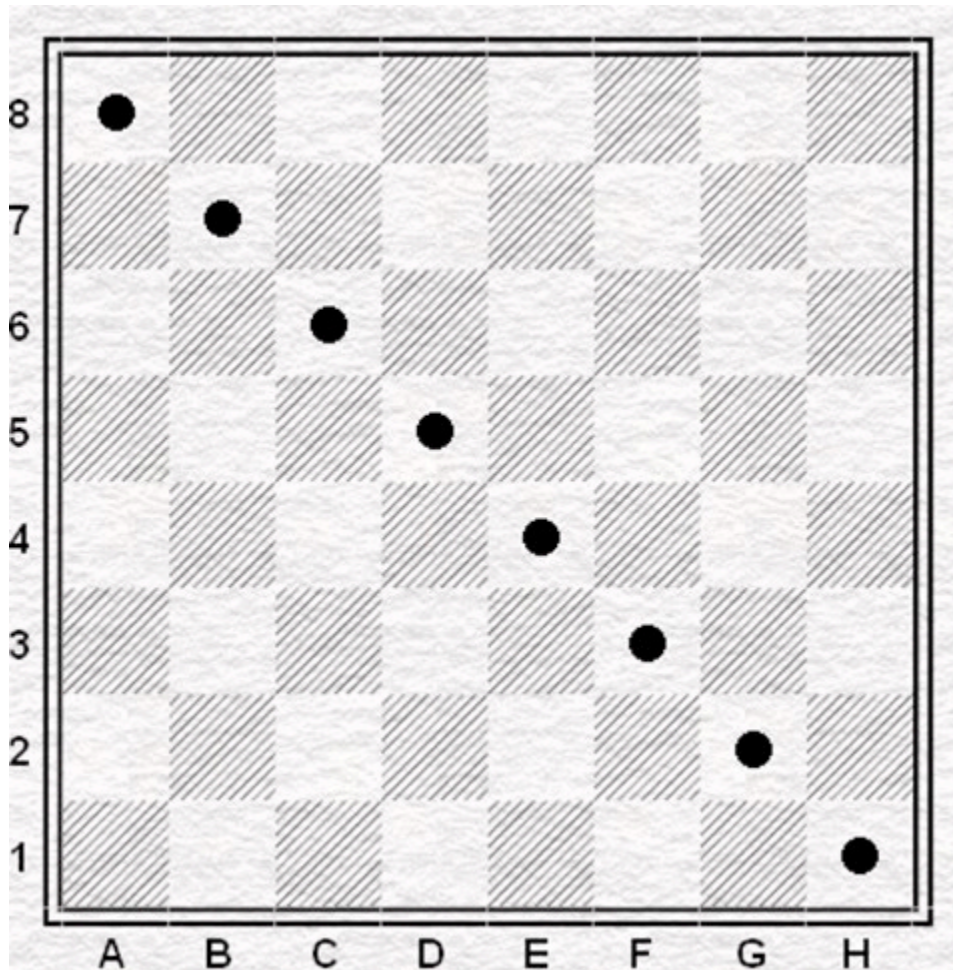
**The Chess Board:**

**Ranks—They go across the board (1-8)**



## The Chess Board:

### Diagonals—Across the board on the same color

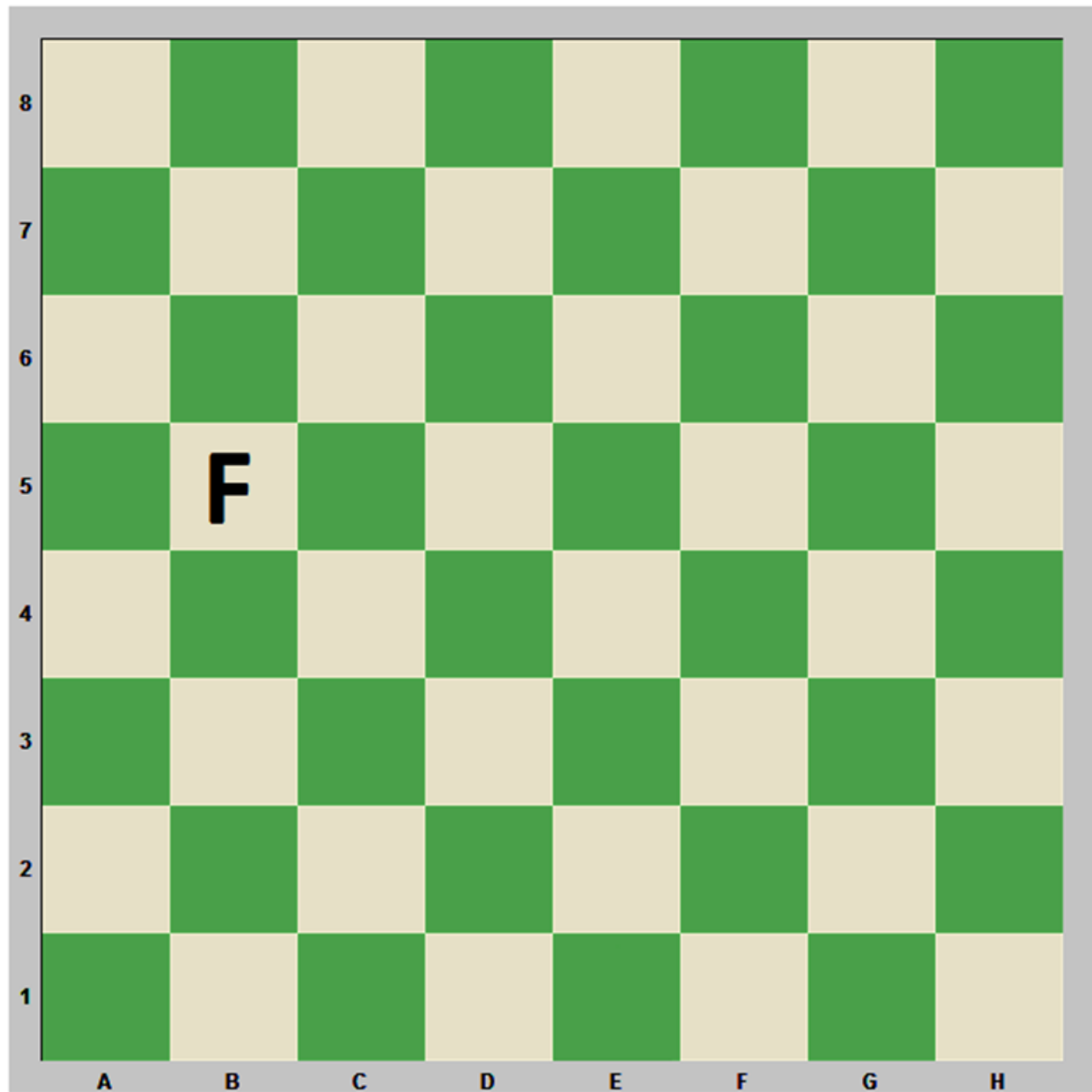






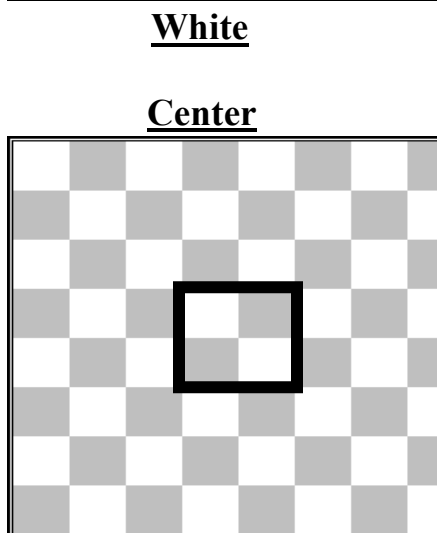
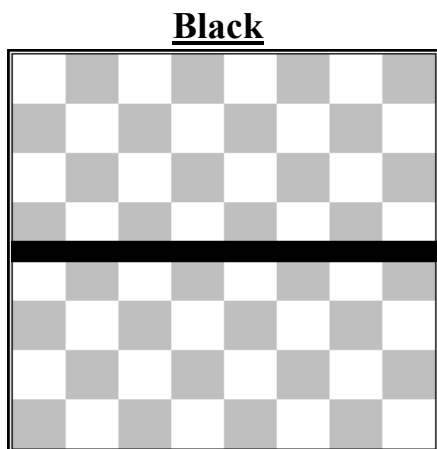
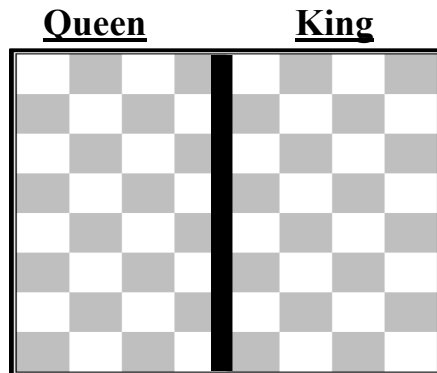
## The Chess Board:

Each square has its own unique address on a chess board. You start with the File Letter then the Rank number to come up with the address. The address of F is b5



## The Chess Board:

There are three important areas of the chess board:



## The Chess Pieces:



[This Photo](#) by Unknown Author is licensed under [CC BY-SA](#)

There are six types of chess pieces. Each player gets 8 pawns, 2 each of bishops, rooks, and knights, one queen and one king.

***Pawn***

***Rook***

***Bishop***

***Queen***

***Knight***

***King***

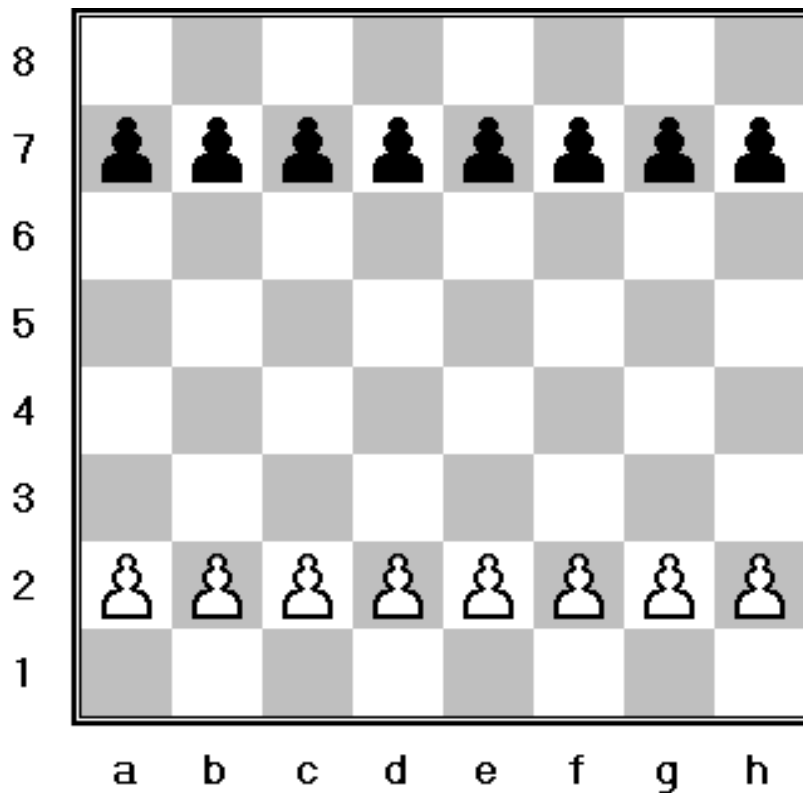
## Chess Pieces and their roles.

### Pawn



- On the first move a pawn may move one or two squares forward on the file.

### Opening position for the Pawns

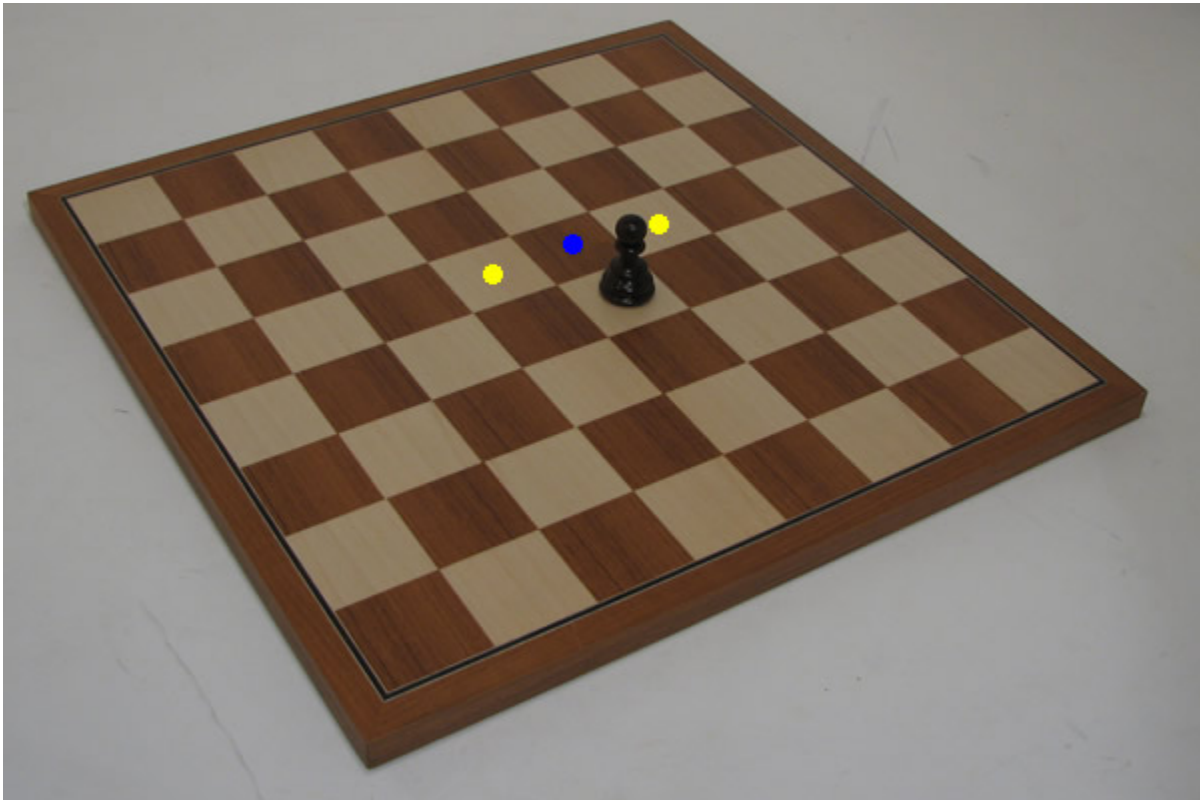


## Chess Pieces and their roles.

### Pawn



- After this **move**, they **can** only **move** one space forward.
- To capture, the **Pawn moves** diagonally one space.
- The Pawn can never move backwards.



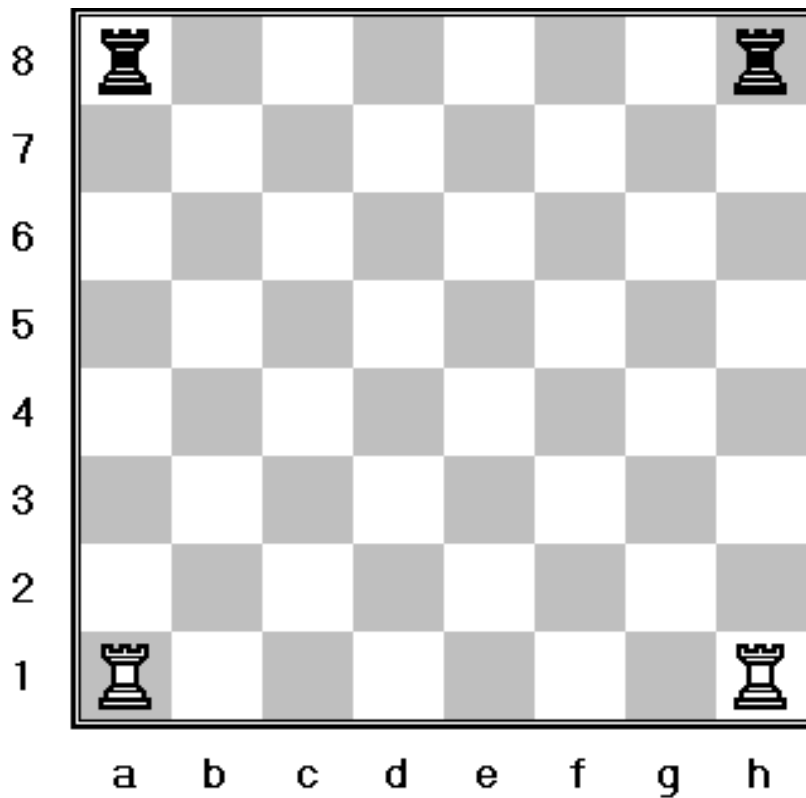
## Chess Pieces and their roles.

### Rook – R (sometimes known as the Castle)



- Moves and captures along the ranks and files. A rook is worth 5 pawns.

### Opening position for the Rooks

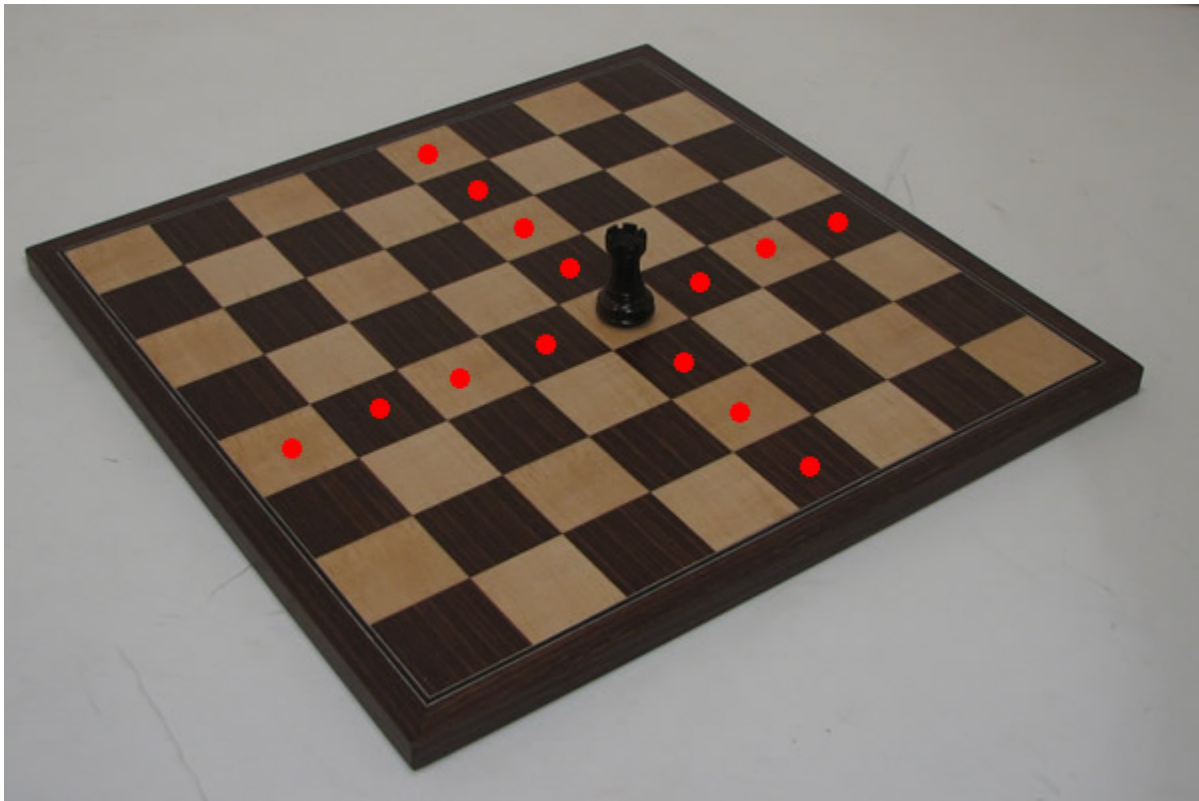


## Chess Pieces and their roles.

### Rook – R (sometimes known as the Castle)



- Can move any number of spaces as long as they are not obstructed by another chess piece



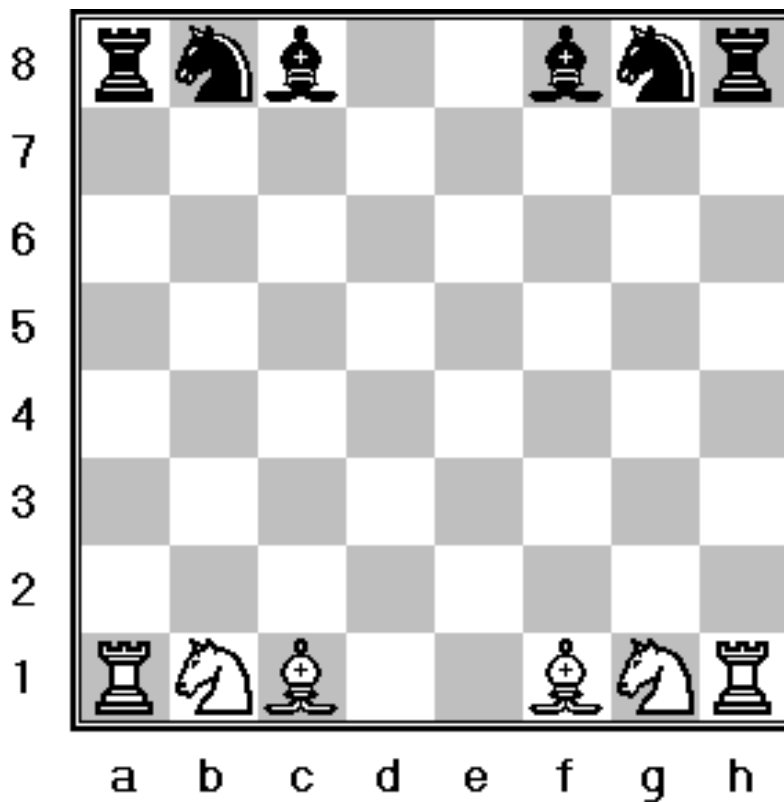
## Chess Pieces and their roles.

### Bishop – B



- Moves and captures along the diagonals. One bishop will always stay on the dark squares and one bishop will also stay on the light squares.

### Opening position for the Rooks, Knights and Bishops



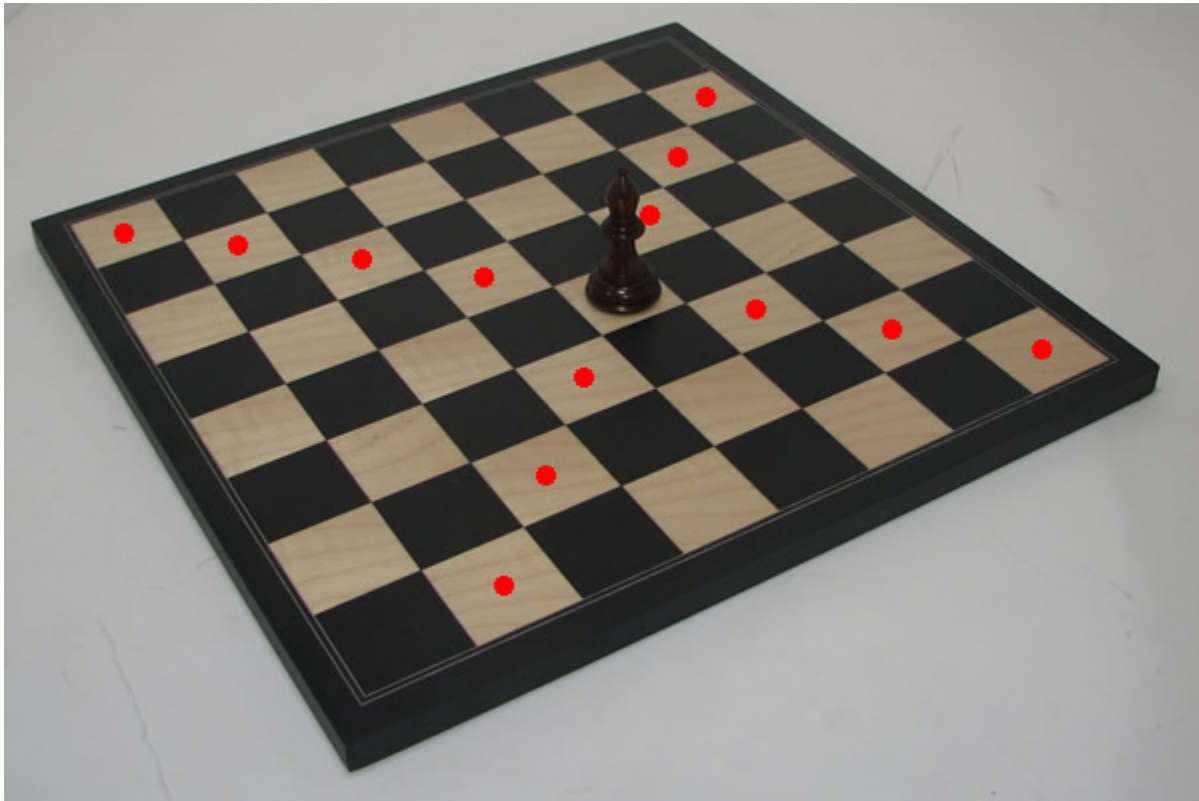


## Chess Pieces and their roles.

### Bishop – B



- This means that the Bishop is bound to the color square it starts on.



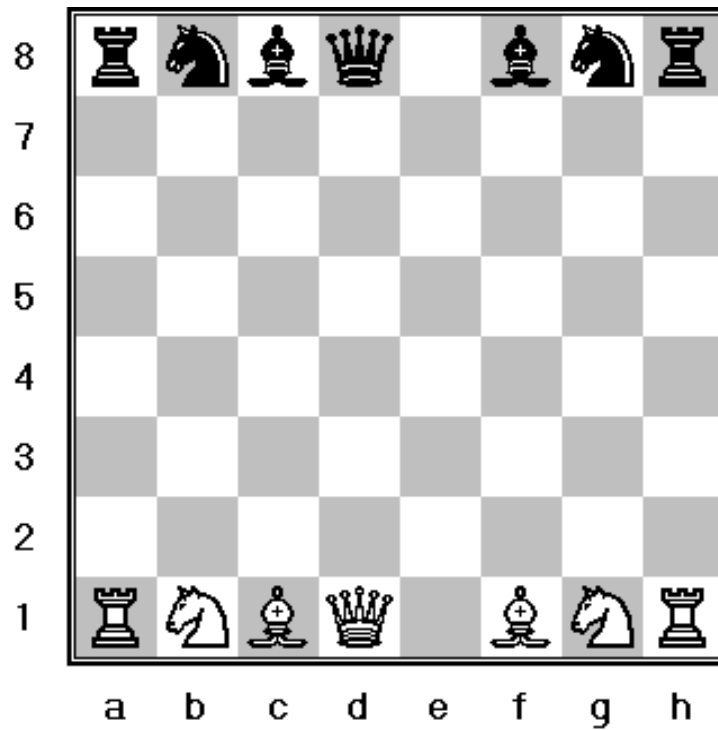
## Chess Pieces and their roles.

### Queen – Q



- The Queen is the most powerful chess piece on the chessboard.
- Moves and captures along the ranks, files, and diagonals.

### Opening position for the Rooks, Knights, Bishops and Queen

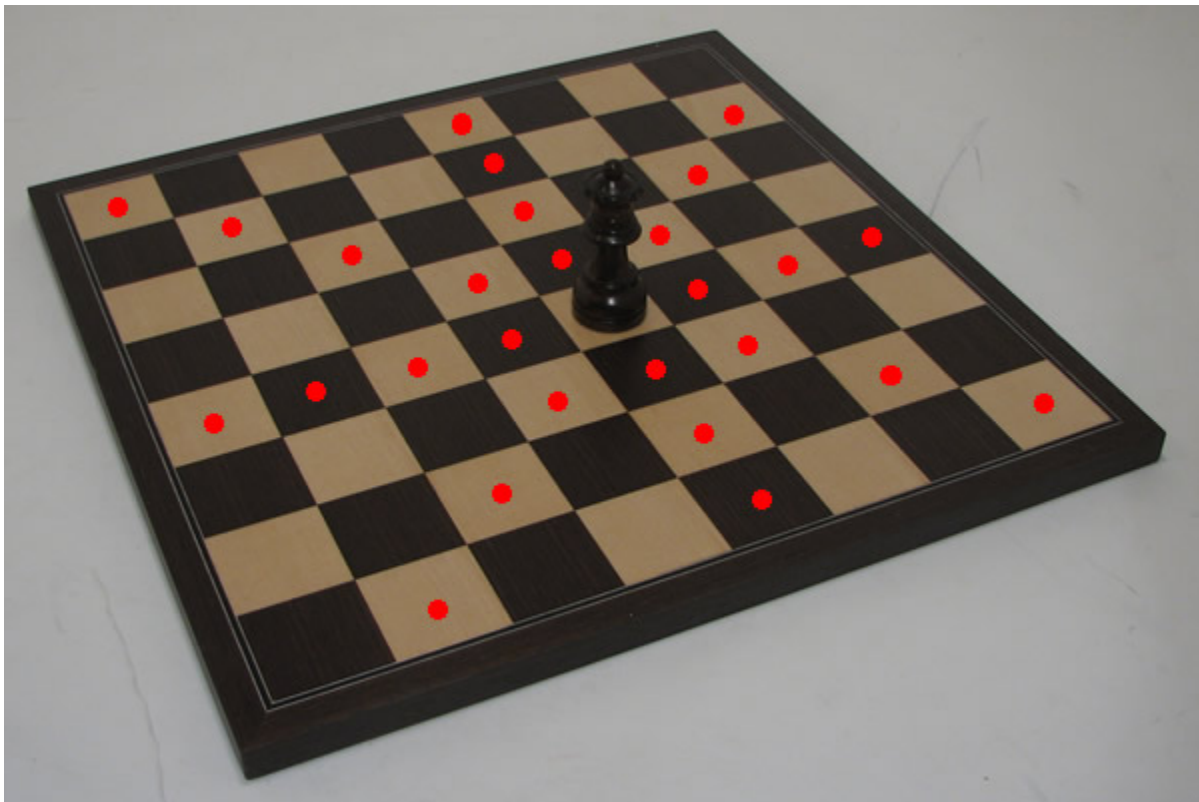


## Chess Pieces and their roles.

### Queen – Q



- She is not limited to just one space - she can move any number of spaces in any direction, as long as she is not obstructed by another chess piece



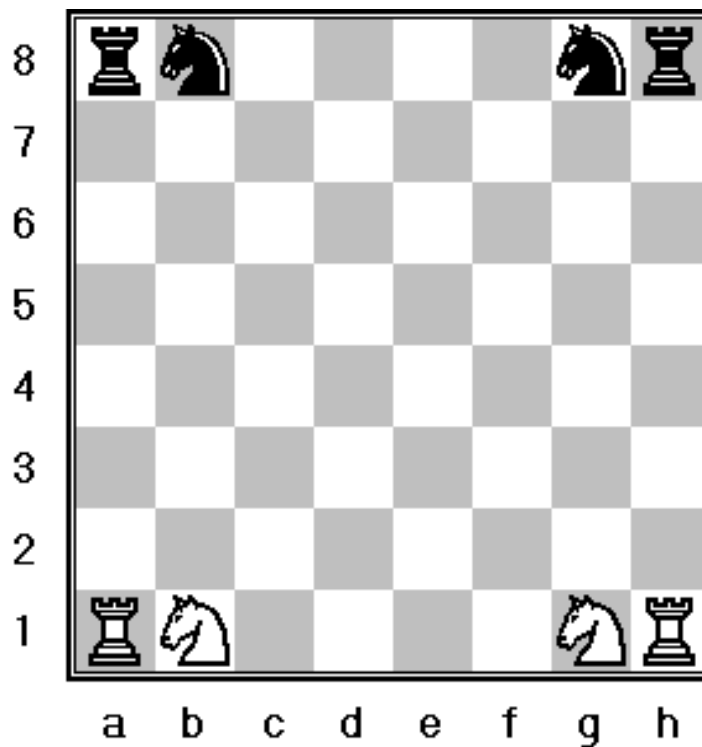
## Chess Pieces and their roles.

### Knight – N



- Moves in an “L” pattern: 2 squares along the file and 1 along the rank, or 2 on the rank and 1 on the file.

### Opening position for the Rooks and Knights

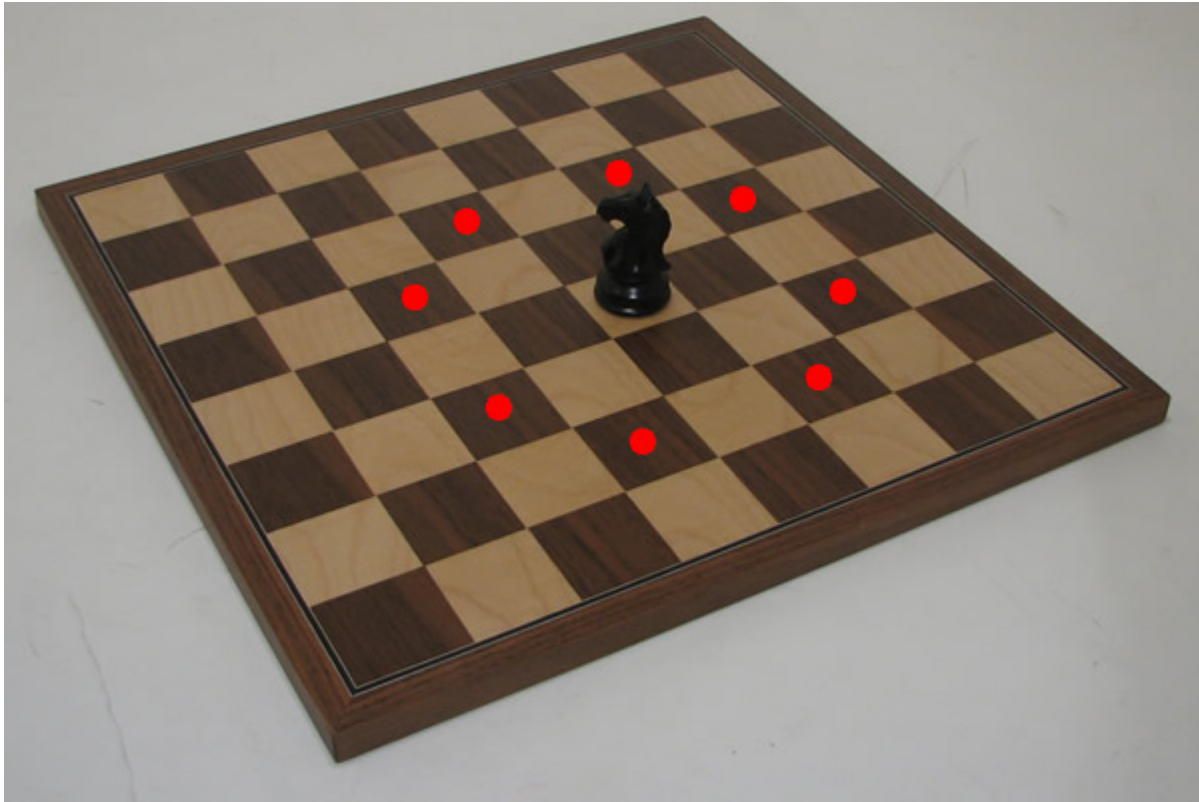


## Chess Pieces and their roles.

### Knights – N



- These chess pieces have the unique trait of being able to 'leap' over other chess pieces.
- Captures where it lands.



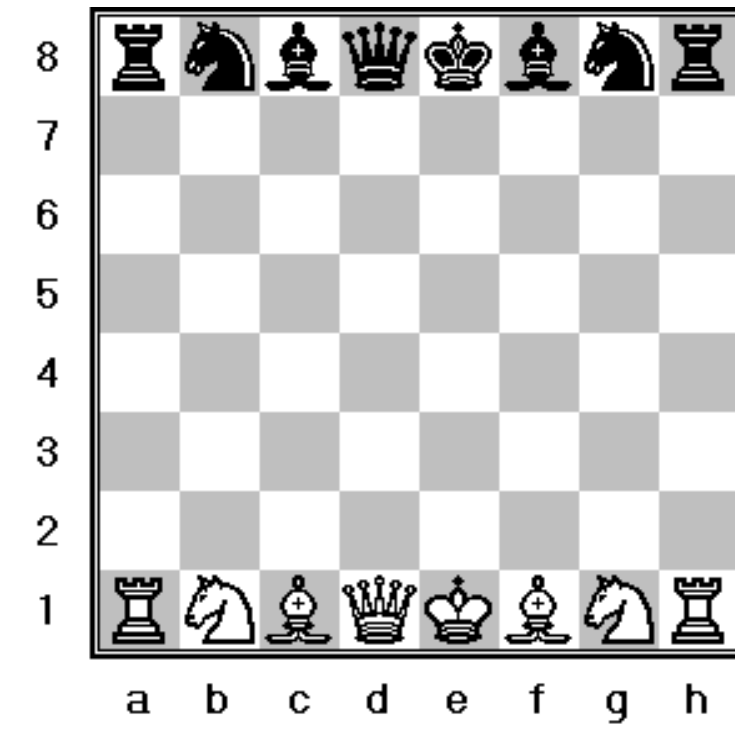
## Chess Pieces and their roles.

### King – K



- Most important chess piece on the chessboard.
- Moves and captures one space along the ranks, files, and diagonals. Two Kings can never be next to each other in a game.

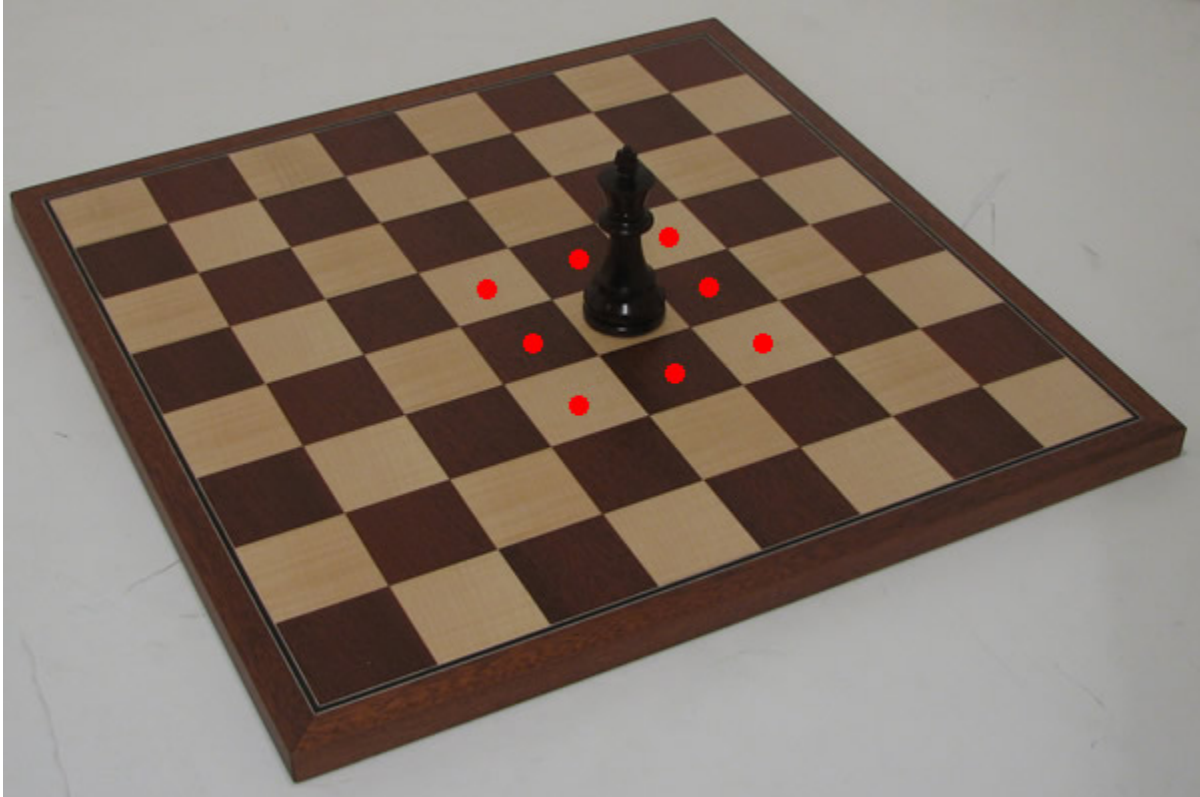
### Opening position for the Rooks, Knights, Bishops, Queen and King



## Chess Pieces and their roles.

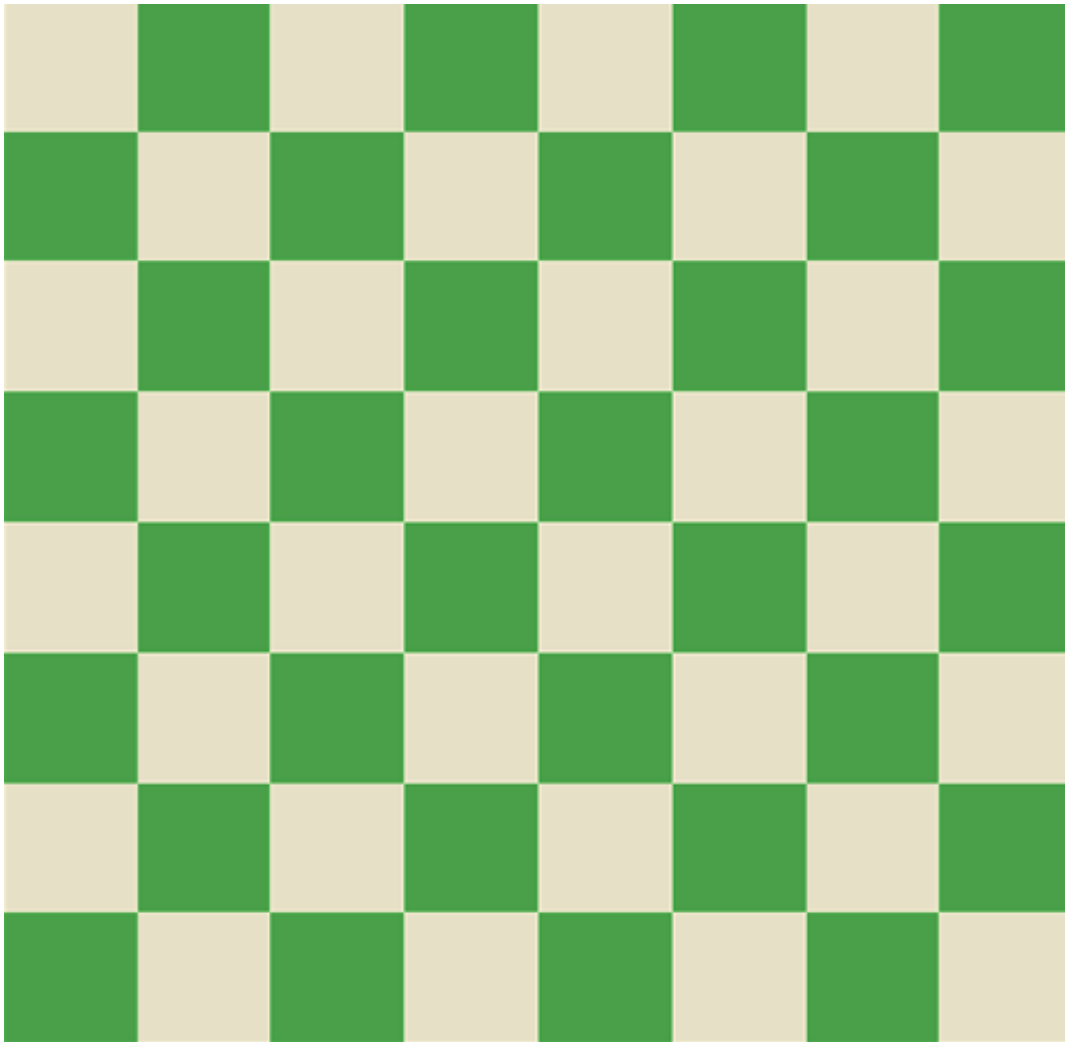
### King – K

- The King can move one space in any direction



## Chess Activity

Position all the pieces on the board at the **beginning** of a “Full” game.  
Write the chess piece name in the squares.



Chess.com





## **Let's Review!**

Name 2 benefits of LINC chess:

1. \_\_\_\_\_

2. \_\_\_\_\_

How many squares are on a chess board?

\_\_\_\_\_

How many light/dark?

\_\_\_\_\_

Name the 3 important groups of squares and how are they arranged:

\_\_\_\_\_

\_\_\_\_\_

\_\_\_\_\_

How do you figure out an address on the chess board?

\_\_\_\_\_



Name the three important areas on the chess board:

---

---

---

How many types of chess pieces are there?

---

Can you name them?

---

---

---

---

---

---

---



What can you do to encourage a child, staff or parents to participate in chess?

---

---

---

---

---

---

---

How can you support chess instructors at your site?

---

---

---

---

---

---

---

---

**Chess Activity Answer:**



**Chess.com**



**Thank you!**

**Learn more Chess information at [www.kclinc.org/chess](http://www.kclinc.org/chess)**

**Online Chess Resources:**

**Chess.com** - A learning site with all levels of chess from beginner to top-ranked players. Over 100,000 games and 15,000 players to challenge.

**ChessGames.com** - Games and chess history. Database of 1 million games.

**Chessusa.com** – America's Largest Chess Store

